

Datasheet for ABIN743903  
**anti-MAP2K6 antibody (pSer202)**[Go to Product page](#)

## 1 Image

## Overview

Quantity:	100 µL
Target:	MAP2K6
Binding Specificity:	pSer202
Reactivity:	Mouse, Rat
Host:	Rabbit
Clonality:	Polyclonal
Conjugate:	This MAP2K6 antibody is un-conjugated
Application:	Western Blotting (WB), ELISA, Immunohistochemistry (Paraffin-embedded Sections) (IHC (p)), Immunofluorescence (Cultured Cells) (IF (cc)), Immunofluorescence (Paraffin-embedded Sections) (IF (p)), Immunohistochemistry (Frozen Sections) (IHC (fro))

## Product Details

Immunogen:	KLH conjugated synthetic phosphopeptide derived from human MEK6 around the phosphorylation site of Ser202
Isotype:	IgG
Cross-Reactivity:	Mouse, Rat
Predicted Reactivity:	Human
Purification:	Purified by Protein A.

## Target Details

Target:	MAP2K6
---------	--------

## Target Details

Alternative Name:	MEK6 ( <a href="#">MAP2K6 Products</a> )
Background:	<p>Synonyms: MAP kinase kinase 6, MAPK/ERK kinase 6, MAPKK6, MEK6, Mitogen Activated Protein Kinase Kinase 6, MKK 6, MKK6, PRKMK6, SAPKK3, Dual specificity mitogen activated protein kinase kinase 6, MKK 6, Dual specificity mitogen activated protein kinase kinase 6, EC 2.7.12.2, MP2K6_HUMAN.</p> <p>Background: Mitogen activated protein kinase kinase 6 (MEK6 or MKK6) belongs to the serine/threonine protein kinase family and the MAPK kinase subfamily (MAP2K, MKK or MEKs). MEK6, closely related to MEK3, catalyzes the concomitant phosphorylation of a threonine and a tyrosine residue in MAP kinase p38, thus activating it, in response to inflammatory cytokines and environmental stress. As an essential component of p38 MAP kinase mediated signal transduction pathway, this protein is involved in many cellular processes such as stress induced cell cycle arrest, transcription activation and apoptosis.</p>
Gene ID:	5608
Pathways:	<a href="#">MAPK Signaling</a> , <a href="#">TLR Signaling</a> , <a href="#">Activation of Innate immune Response</a> , <a href="#">Regulation of Muscle Cell Differentiation</a> , <a href="#">Toll-Like Receptors Cascades</a>

## Application Details

Application Notes:	WB 1:300-5000 ELISA 1:500-1000 IHC-P 1:200-400 IHC-F 1:100-500 IF(IHC-P) 1:50-200 IF(IHC-F) 1:50-200 IF(ICC) 1:50-200
--------------------	---

Restrictions:	For Research Use only
---------------	-----------------------

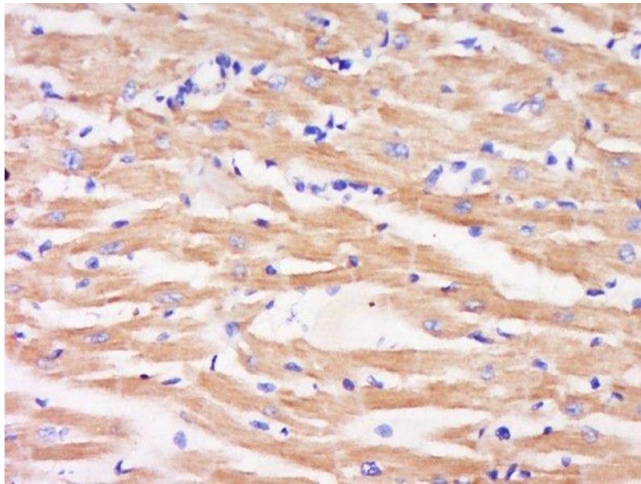
## Handling

Format:	Liquid
Concentration:	1 µg/µL
Buffer:	0.01M TBS( pH 7.4) with 1 % BSA, 0.02 % Proclin300 and 50 % Glycerol.
Preservative:	ProClin
Precaution of Use:	This product contains ProClin: a POISONOUS AND HAZARDOUS SUBSTANCE, which should be

## Handling

	handled by trained staff only.
Storage:	4 °C,-20 °C
Storage Comment:	Shipped at 4°C. Store at -20°C for one year. Avoid repeated freeze/thaw cycles.
Expiry Date:	12 months

## Images



### Immunohistochemistry (Paraffin-embedded Sections)

**Image 1.** Paraformaldehyde-fixed, paraffin embedded rat heart, Antigen retrieval by boiling in sodium citrate buffer (pH6) for 15min, Block endogenous peroxidase by 3% hydrogen peroxide for 30 minutes, Blocking buffer (normal goat serum) at 37°C for 20min, Antibody incubation with Rabbit Anti-MEK6 (Ser202) Polyclonal Antibody, Unconjugated at 1:500 overnight at 4°C, followed by a conjugated secondary for 90 minutes and DAB staining.