

Datasheet for ABIN7439033

anti-MYL3/CMLC1 antibody (AA 5-181)**6** Images[Go to Product page](#)

Overview

Quantity:	100 µL
Target:	MYL3/CMLC1 (MYL3)
Binding Specificity:	AA 5-181
Reactivity:	Human
Host:	Rabbit
Clonality:	Polyclonal
Conjugate:	This MYL3/CMLC1 antibody is un-conjugated
Application:	Western Blotting (WB), Immunohistochemistry (IHC), Immunoprecipitation (IP), Immunocytochemistry (ICC)

Product Details

Purpose:	Polyclonal Antibody to Myosin Light Chain 3, Alkali, Ventricular, Slow Skeletal (MYL3)
Immunogen:	Recombinant Myosin Light Chain 3, Alkali, Ventricular, Slow Skeletal (MYL3) corresponding to Lys5~Gly181 with N-terminal His Tag
Isotype:	IgG
Specificity:	The antibody is a rabbit polyclonal antibody raised against MYL3. It has been selected for its ability to recognize MYL3 in immunohistochemical staining and western blotting.
Cross-Reactivity:	Mouse, Pig, Rat
Purification:	Antigen-specific affinity chromatography followed by Protein A affinity chromatography

Target Details

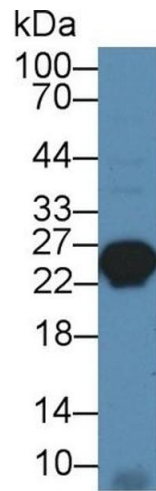
Target:	MYL3/CMLC1 (MYL3)
Alternative Name:	Myosin Light Chain 3, Alkali, Ventricular, Slow Skeletal (MYL3 Products)
Background:	CMH8, MLC1V, VLC1, MLC1SB, Cardiac myosin light chain 1, Ventricular/slow twitch myosin alkali light chain

Application Details

Application Notes:	Western blotting: 0.5-2 µg/mL Immunohistochemistry: 5-20 µg/mL Immunocytochemistry: 5-20 µg/mL Optimal working dilutions must be determined by end user.
Comment:	The thermal stability is described by the loss rate. The loss rate was determined by accelerated thermal degradation test, that is, incubate the protein at 37°C for 48h, and no obvious degradation and precipitation were observed. The loss rate is less than 5% within the expiration date under appropriate storage condition.
Restrictions:	For Research Use only

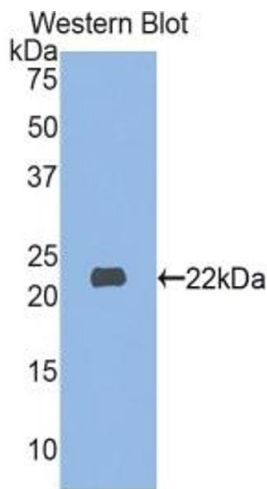
Handling

Format:	Liquid
Buffer:	PBS, pH 7.4, containing 0.02 % Sodium azide, 50 % glycerol.
Preservative:	Sodium azide
Precaution of Use:	This product contains Sodium azide: a POISONOUS AND HAZARDOUS SUBSTANCE which should be handled by trained staff only.
Storage:	4 °C,-20 °C
Storage Comment:	Store at 4°C for frequent use. Stored at -20°C in a manual defrost freezer for two year without detectable loss of activity. Avoid repeated freeze-thaw cycles.
Expiry Date:	24 months



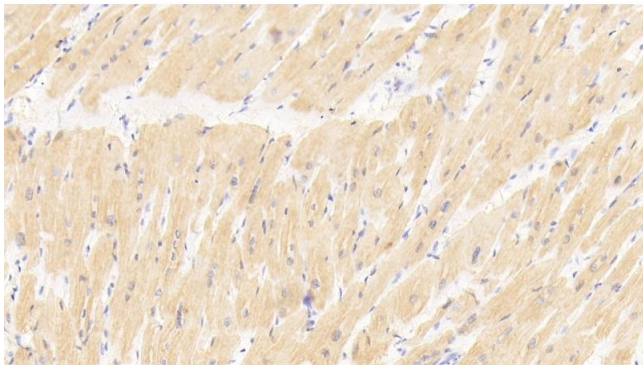
Western Blotting

Image 1. Detection of MYL3 in Mouse Heart lysate using Polyclonal Antibody to Myosin Light Chain 3, Alkali, Ventricular, Slow Skeletal (MYL3)



Western Blotting

Image 2. Detection of Recombinant MYL3, Human using Polyclonal Antibody to Myosin Light Chain 3, Alkali, Ventricular, Slow Skeletal (MYL3)



Immunohistochemistry

Image 3. Detection of MYL3 in Human Cardiac Muscle Tissue using Polyclonal Antibody to Myosin Light Chain 3, Alkali, Ventricular, Slow Skeletal (MYL3)

Please check the [product details page](#) for more images. Overall 6 images are available for ABIN7439033.