



Datasheet for ABIN7439090

anti-Laminin beta 1 antibody (AA 1053-1258)



[Go to Product page](#)

5 Images

Overview

Quantity:	100 µL
Target:	Laminin beta 1 (LAMB1)
Binding Specificity:	AA 1053-1258
Reactivity:	Mouse
Host:	Rabbit
Clonality:	Polyclonal
Conjugate:	This Laminin beta 1 antibody is un-conjugated
Application:	Western Blotting (WB), Immunohistochemistry (IHC), Immunoprecipitation (IP), Immunocytochemistry (ICC)

Product Details

Purpose:	Polyclonal Antibody to Laminin Beta 1 (LAMB1)
Immunogen:	Recombinant Laminin Beta 1 (LAMB1) corresponding to Gln1053~Lys1258 with N-terminal His and GST Tag
Isotype:	IgG
Specificity:	The antibody is a rabbit polyclonal antibody raised against LAMB1. It has been selected for its ability to recognize LAMB1 in immunohistochemical staining and western blotting.
Purification:	Antigen-specific affinity chromatography followed by Protein A affinity chromatography

Target Details

Target:	Laminin beta 1 (LAMB1)
---------	------------------------

Target Details

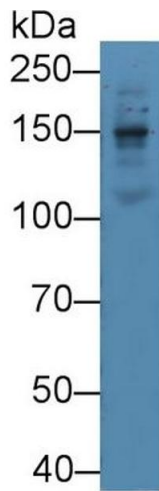
Alternative Name:	Laminin Beta 1 (LAMB1 Products)
Background:	LAM-B1, CLM, Cutis Laxa With Marfanoid Phenotype

Application Details

Application Notes:	Western blotting: 0.5-2 µg/mL Immunohistochemistry: 5-20 µg/mL Immunocytochemistry: 5-20 µg/mL Optimal working dilutions must be determined by end user.
Comment:	The thermal stability is described by the loss rate. The loss rate was determined by accelerated thermal degradation test, that is, incubate the protein at 37°C for 48h, and no obvious degradation and precipitation were observed. The loss rate is less than 5% within the expiration date under appropriate storage condition.
Restrictions:	For Research Use only

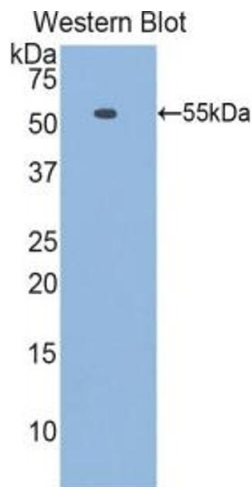
Handling

Format:	Liquid
Buffer:	PBS, pH 7.4, containing 0.02 % Sodium azide, 50 % glycerol.
Preservative:	Sodium azide
Precaution of Use:	This product contains Sodium azide: a POISONOUS AND HAZARDOUS SUBSTANCE which should be handled by trained staff only.
Storage:	4 °C,-20 °C
Storage Comment:	Store at 4°C for frequent use. Stored at -20°C in a manual defrost freezer for two year without detectable loss of activity. Avoid repeated freeze-thaw cycles.
Expiry Date:	24 months



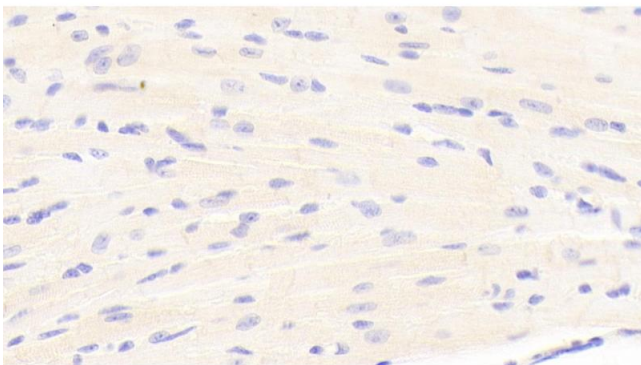
Western Blotting

Image 1. Detection of LAMB1 in Mouse Serum using Polyclonal Antibody to Laminin Beta 1 (LAMB1)



Western Blotting

Image 2. Detection of Recombinant LAMB1, Mouse using Polyclonal Antibody to Laminin Beta 1 (LAMB1)



Immunohistochemistry

Image 3. Detection of LAMB1 in Mouse Cardiac Muscle Tissue using Polyclonal Antibody to Laminin Beta 1 (LAMB1)

Please check the [product details page](#) for more images. Overall 5 images are available for ABIN7439090.