

Datasheet for ABIN7439129

anti-Laminin antibody (AA 2901-3106)**3** Images[Go to Product page](#)

Overview

Quantity:	100 µL
Target:	Laminin (LAMA2)
Binding Specificity:	AA 2901-3106
Reactivity:	Mouse
Host:	Rabbit
Clonality:	Polyclonal
Conjugate:	This Laminin antibody is un-conjugated
Application:	Immunohistochemistry (IHC), Western Blotting (WB), Immunoprecipitation (IP), Immunocytochemistry (ICC)

Product Details

Purpose:	Polyclonal Antibody to Laminin Alpha 2 (LAMA2)
Immunogen:	Recombinant Laminin Alpha 2 (LAMA2) corresponding to Ser2901~Asn3106 with N-terminal His Tag
Isotype:	IgG
Specificity:	The antibody is a rabbit polyclonal antibody raised against LAMA2. It has been selected for its ability to recognize LAMA2 in immunohistochemical staining and western blotting.
Purification:	Antigen-specific affinity chromatography followed by Protein A affinity chromatography

Target Details

Target:	Laminin (LAMA2)
---------	-----------------

Target Details

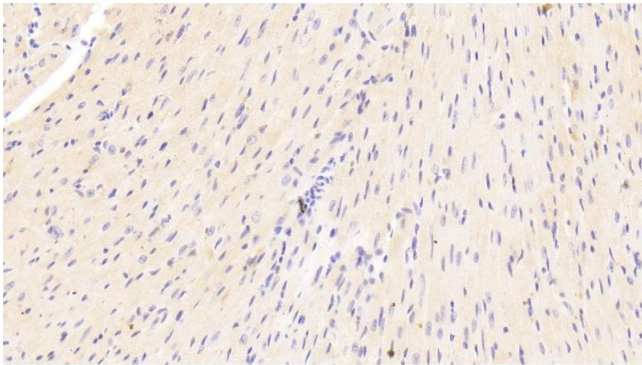
Alternative Name:	Laminin Alpha 2 (LAMA2 Products)
Background:	LAM-A2, LAMM, Merosin, Congenital Muscular Dystrophy, Laminin M chain, Merosin heavy chain

Application Details

Application Notes:	Western blotting: 0.5-2 µg/mL Immunohistochemistry: 5-20 µg/mL Immunocytochemistry: 5-20 µg/mL Optimal working dilutions must be determined by end user.
Comment:	The thermal stability is described by the loss rate. The loss rate was determined by accelerated thermal degradation test, that is, incubate the protein at 37°C for 48h, and no obvious degradation and precipitation were observed. The loss rate is less than 5% within the expiration date under appropriate storage condition.
Restrictions:	For Research Use only

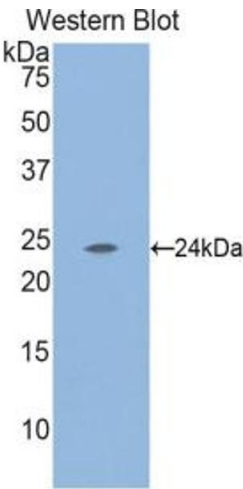
Handling

Format:	Liquid
Buffer:	PBS, pH 7.4, containing 0.02 % Sodium azide, 50 % glycerol.
Preservative:	Sodium azide
Precaution of Use:	This product contains Sodium azide: a POISONOUS AND HAZARDOUS SUBSTANCE which should be handled by trained staff only.
Storage:	4 °C,-20 °C
Storage Comment:	Store at 4°C for frequent use. Stored at -20°C in a manual defrost freezer for two year without detectable loss of activity. Avoid repeated freeze-thaw cycles.
Expiry Date:	24 months



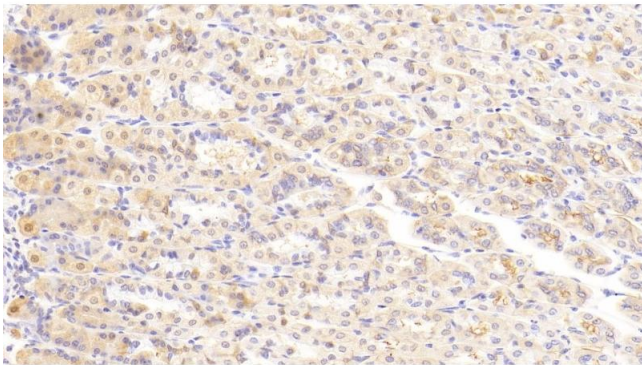
Immunohistochemistry

Image 1. Detection of LAMa2 in Mouse Heart Tissue using Polyclonal Antibody to Laminin Alpha 2 (LAMa2)



Western Blotting

Image 2. Detection of Recombinant LAMa2, Mouse using Polyclonal Antibody to Laminin Alpha 2 (LAMa2)



Immunohistochemistry

Image 3. Detection of LAMa2 in Mouse Stomach Tissue using Polyclonal Antibody to Laminin Alpha 2 (LAMa2)