

Datasheet for ABIN7439138  
**anti-LRP5 antibody (AA 769-1016)**

## 2 Images

[Go to Product page](#)

## Overview

|                      |  |
|----------------------|--|
| Quantity:            | 100 µL   |
| Target:              | LRP5   |
| Binding Specificity: | AA 769-1016  |
| Reactivity:          | Human  |
| Host:                | Rabbit   |
| Clonality:           | Polyclonal   |
| Conjugate:           | This LRP5 antibody is un-conjugated  |
| Application:         | Western Blotting (WB), Immunohistochemistry (IHC), Immunoprecipitation (IP), Immunocytochemistry (ICC) |

## Product Details

|                   |  |
|-------------------|--|
| Purpose:          | Polyclonal Antibody to Low Density Lipoprotein Receptor Related Protein 5 (LRP5)   |
| Immunogen:        | Recombinant Low Density Lipoprotein Receptor Related Protein 5 (LRP5) corresponding to Asp769~Leu1016 with N-terminal His Tag  |
| Isotype:          | IgG  |
| Specificity:      | The antibody is a rabbit polyclonal antibody raised against LRP5. It has been selected for its ability to recognize LRP5 in immunohistochemical staining and western blotting. |
| Cross-Reactivity: | Pig  |
| Purification:     | Antigen-specific affinity chromatography followed by Protein A affinity chromatography   |

## Target Details

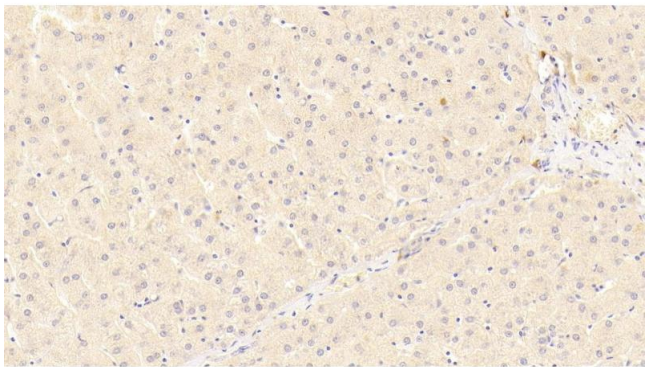
|                   |   |
|-------------------|---|
| Target:           | LRP5  |
| Alternative Name: | Low Density Lipoprotein Receptor Related Protein 5 ( <a href="#">LRP5 Products</a> )  |
| Background:       | HBM, BMND1, EVR1, EVR4, LR3, LRP7, OPPG, OPS, OPTA1, VBCH2, Osteoporosis<br>Pseudoglioma Syndrome, Exudative Vitreoretinopathy 1        |
| Pathways:         | <a href="#">WNT Signaling</a> , <a href="#">Stem Cell Maintenance</a> , <a href="#">Positive Regulation of fat Cell Differentiation</a> |

## Application Details

|                    |  |
|--------------------|--|
| Application Notes: | Western blotting: 1-5 µg/mL Immunocytochemistry in formalin fixed cells: 5-20 µg/mL<br>Immunohistochemistry in formalin fixed frozen section: 5-20 µg/mL Immunohistochemistry in<br>paraffin section: 5-20 µg/mL Enzyme-linked Immunosorbent Assay: 0.05-2 µg/mL Optimal<br>working dilutions must be determined by end user.                |
| Comment:           | The thermal stability is described by the loss rate. The loss rate was determined by accelerated<br>thermal degradation test, that is, incubate the protein at 37°C for 48h, and no obvious<br>degradation and precipitation were observed. The loss rate is less than 5% within the expiration<br>date under appropriate storage condition. |
| Restrictions:      | For Research Use only  |

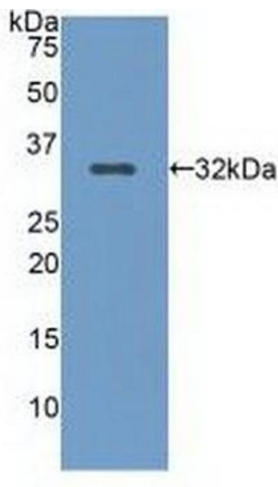
## Handling

|                    |  |
|--------------------|--|
| Format:            | Liquid   |
| Buffer:            | 0.01M PBS, pH 7.4, containing 0.05 % Proclin-300, 50 % glycerol.   |
| Preservative:      | ProClin  |
| Precaution of Use: | This product contains ProClin: a POISONOUS AND HAZARDOUS SUBSTANCE which should be<br>handled by trained staff only.   |
| Storage:           | 4 °C,-20 °C  |
| Storage Comment:   | Store at 4°C for frequent use. Stored at -20°C in a manual defrost freezer for two year without<br>detectable loss of activity. Avoid repeated freeze-thaw cycles. |
| Expiry Date:       | 24 months  |



Immunohistochemistry

**Image 1.** Detection of LRP5 in Human Liver Tissue using Polyclonal Antibody to Low Density Lipoprotein Receptor Related Protein 5 (LRP5)



Western Blotting

**Image 2.** Detection of Recombinant LRP5, Human using Polyclonal Antibody to Low Density Lipoprotein Receptor Related Protein 5 (LRP5)