

Datasheet for ABIN743918  
**anti-MAP2K7 antibody (pSer271, pThr275)**[Go to Product page](#)

## 1 Image

## Overview

Quantity:	100 µL
Target:	MAP2K7
Binding Specificity:	pSer271, pThr275
Reactivity:	Human, Mouse, Rat
Host:	Rabbit
Clonality:	Polyclonal
Conjugate:	This MAP2K7 antibody is un-conjugated
Application:	Western Blotting (WB), ELISA, Flow Cytometry (FACS), Immunofluorescence (Cultured Cells) (IF (cc)), Immunofluorescence (Paraffin-embedded Sections) (IF (p)), Immunohistochemistry (Paraffin-embedded Sections) (IHC (p)), Immunohistochemistry (Frozen Sections) (IHC (fro))

## Product Details

Immunogen:	KLH conjugated synthetic phosphopeptide derived from human MKK7 around the phosphorylation site of Ser271/Thr275
Isotype:	IgG
Cross-Reactivity:	Human, Mouse, Rat
Predicted Reactivity:	Dog,Cow,Pig
Purification:	Purified by Protein A.

## Target Details

Target:	MAP2K7
---------	--------

## Target Details

Alternative Name:	MKK7 + ( <a href="#">MAP2K7 Products</a> )
Background:	<p>Synonyms: MEK7 phospho S277 + T275, MEK7 phospho Ser277 + Thr275, p-MEK7 S277 + T275, p-MEK7 Ser277 + Thr275, c-Jun N-terminal kinase kinase 2, Dual specificity mitogen activated protein kinase kinase 7, Dual specificity mitogen-activated protein kinase kinase 7, JNK activating kinase 2, JNK kinase 2, JNK-activating kinase 2, Jnkk 2, Jnkk-2, Jnkk2, MAP kinase kinase 7, MAP2K7, MAPK/ERK kinase 7, MAPKK 7, MAPKK-7, MAPKK7, MEK 7, Mitogen Activated Protein Kinase kinase 7, MKK 7, MKK-7, MKK7, MP2K7_HUMAN, PRKMK 7, PRKMK-7, PRKMK7, Sek 2, Sek-2, Sek2.</p> <p>Background: The protein encoded by this gene is a dual specificity protein kinase that belongs to the MAP kinase kinase family. This kinase specifically activates MAPK8/JNK1 and MAPK9/JNK2, and this kinase itself is phosphorylated and activated by MAP kinase kinase kinases including MAP3K1/MEKK1, MAP3K2/MEKK2, MAP3K3/MEKK5, and MAP4K2/GCK. This kinase is involved in the signal transduction mediating the cell responses to proinflammatory cytokines, and environmental stresses. Multiple alternatively spliced transcript variants encoding distinct isoforms have been found, but only one transcript variant has been supported and defined. [provided by RefSeq, Jul 2008].</p>
Gene ID:	5609
Pathways:	<a href="#">MAPK Signaling</a> , <a href="#">TLR Signaling</a> , <a href="#">Fc-epsilon Receptor Signaling Pathway</a> , <a href="#">Activation of Innate immune Response</a> , <a href="#">Toll-Like Receptors Cascades</a> , <a href="#">BCR Signaling</a>

## Application Details

Application Notes:	WB 1:300-5000 ELISA 1:500-1000 FCM 1:20-100 IHC-P 1:200-400 IHC-F 1:100-500 IF(IHC-P) 1:50-200 IF(IHC-F) 1:50-200 IF(ICC) 1:50-200
Restrictions:	For Research Use only

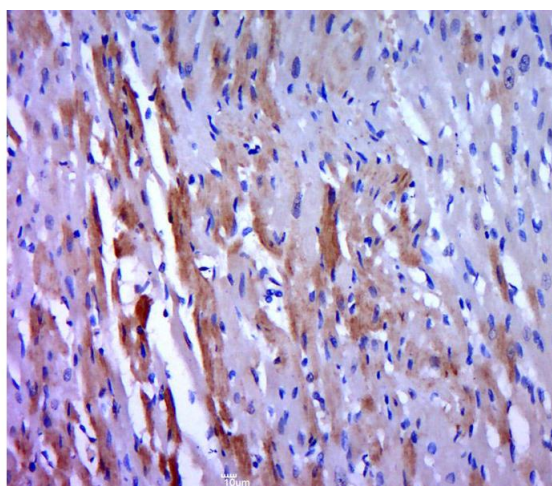
## Handling

Format:	Liquid
---------	--------

## Handling

Concentration:	1 µg/µL
Buffer:	0.01M TBS( pH 7.4) with 1 % BSA, 0.02 % Proclin300 and 50 % Glycerol.
Preservative:	ProClin
Precaution of Use:	This product contains ProClin: a POISONOUS AND HAZARDOUS SUBSTANCE, which should be handled by trained staff only.
Storage:	4 °C, -20 °C
Storage Comment:	Shipped at 4°C. Store at -20°C for one year. Avoid repeated freeze/thaw cycles.
Expiry Date:	12 months

## Images



### Immunohistochemistry (Paraffin-embedded Sections)

**Image 1.** Paraformaldehyde-fixed, paraffin embedded rat heart; Antigen retrieval by boiling in sodium citrate buffer (pH6.0) for 15min; Block endogenous peroxidase by 3% hydrogen peroxide for 20 minutes; Blocking buffer (normal goat serum) at 37°C for 30min; Antibody incubation with MEK7 (Ser271 + Thr275) Polyclonal Antibody, Unconjugated (bs-3277R) at 1:400 overnight at 4°C, followed by a conjugated secondary (sp-0023) for 20 minutes and DAB staining.