

Datasheet for ABIN7439195
anti-LOXL1 antibody (AA 393-603)[Go to Product page](#)

2 Images

Overview

Quantity:	100 µL
Target:	LOXL1
Binding Specificity:	AA 393-603
Reactivity:	Rat
Host:	Rabbit
Clonality:	Polyclonal
Conjugate:	This LOXL1 antibody is un-conjugated
Application:	Western Blotting (WB), Immunohistochemistry (IHC), Immunoprecipitation (IP), Immunocytochemistry (ICC)

Product Details

Purpose:	Polyclonal Antibody to Lysyl Oxidase Like Protein 1 (LOXL1)
Immunogen:	Recombinant Lysyl Oxidase Like Protein 1 (LOXL1) corresponding to Val393~Cys603 (Accession # Q5FWS5)
Isotype:	IgG
Specificity:	The antibody is a rabbit polyclonal antibody raised against LOXL1. It has been selected for its ability to recognize LOXL1 in immunohistochemical staining and western blotting.
Purification:	Antigen-specific affinity chromatography followed by Protein A affinity chromatography

Target Details

Target:	LOXL1
---------	-------

Target Details

Alternative Name: Lysyl Oxidase Like Protein 1 ([LOXL1 Products](#))

Background: LOL, LOXL, Lysyl oxidase homolog 1

Application Details

Application Notes: Western blotting: 0.5-2 µg/mL
Immunohistochemistry: 5-20 µg/mL
Immunocytochemistry: 5-20 µg/mL
Optimal working dilutions must be determined by end user.

Comment: The thermal stability is described by the loss rate. The loss rate was determined by accelerated thermal degradation test, that is, incubate the protein at 37°C for 48h, and no obvious degradation and precipitation were observed. The loss rate is less than 5% within the expiration date under appropriate storage condition.

Restrictions: For Research Use only

Handling

Format: Liquid

Buffer: PBS, pH 7.4, containing 0.02 % Sodium azide, 50 % glycerol.

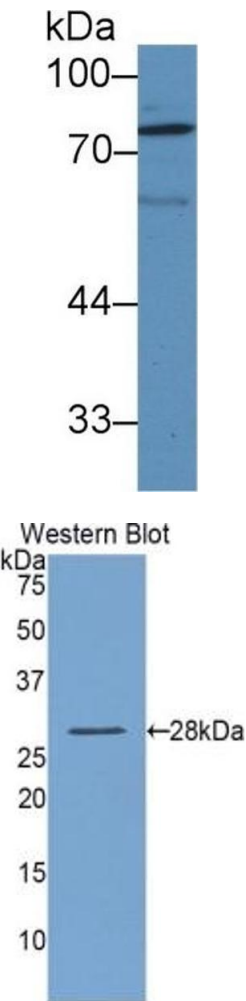
Preservative: Sodium azide

Precaution of Use: This product contains Sodium azide: a POISONOUS AND HAZARDOUS SUBSTANCE which should be handled by trained staff only.

Storage: 4 °C, -20 °C

Storage Comment: Store at 4°C for frequent use. Stored at -20°C in a manual defrost freezer for two year without detectable loss of activity. Avoid repeated freeze-thaw cycles.

Expiry Date: 24 months



Western Blotting

Image 1. Detection of LOXL1 in Rat Serum using Polyclonal Antibody to Lysyl Oxidase Like Protein 1 (LOXL1)

Western Blotting

Image 2. Detection of Recombinant LOXL1, Rat using Polyclonal Antibody to Lysyl Oxidase Like Protein 1 (LOXL1)