

Datasheet for ABIN7439255
anti-Involucrin antibody (AA 301-460)[Go to Product page](#)

3 Images

Overview

Quantity:	100 µL
Target:	Involucrin (IVL)
Binding Specificity:	AA 301-460
Reactivity:	Mouse
Host:	Rabbit
Clonality:	Polyclonal
Conjugate:	This Involucrin antibody is un-conjugated
Application:	Western Blotting (WB), Immunohistochemistry (IHC), Immunoprecipitation (IP), Immunocytochemistry (ICC)

Product Details

Purpose:	Polyclonal Antibody to Involucrin (INV)
Immunogen:	Recombinant Involucrin (INV) corresponding to Met301~Glu460 (Accession # P48997)
Isotype:	IgG
Specificity:	The antibody is a rabbit polyclonal antibody raised against INV. It has been selected for its ability to recognize INV in immunohistochemical staining and western blotting.
Cross-Reactivity:	Human
Purification:	Antigen-specific affinity chromatography followed by Protein A affinity chromatography

Target Details

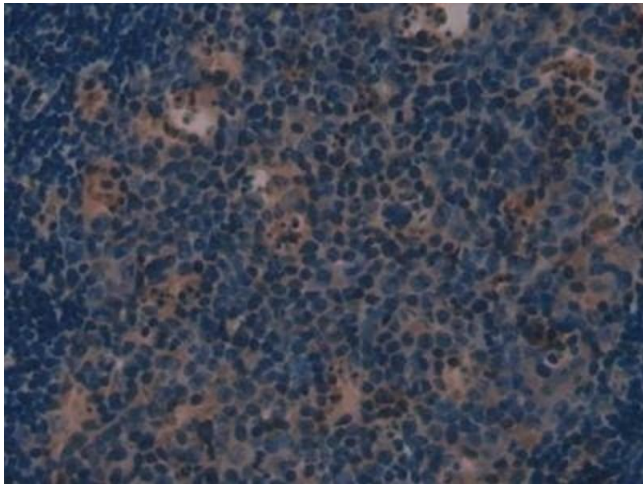
Target:	Involucrin (IVL)
Alternative Name:	Involucrin (IVL Products)
Background:	IVL

Application Details

Application Notes:	Western blotting: 0.5-2 µg/mL Immunohistochemistry: 5-20 µg/mL Immunocytochemistry: 5-20 µg/mL Optimal working dilutions must be determined by end user.
Comment:	The thermal stability is described by the loss rate. The loss rate was determined by accelerated thermal degradation test, that is, incubate the protein at 37°C for 48h, and no obvious degradation and precipitation were observed. The loss rate is less than 5% within the expiration date under appropriate storage condition.
Restrictions:	For Research Use only

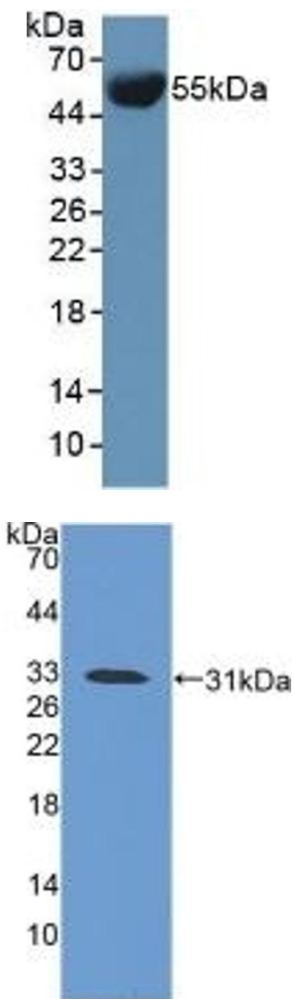
Handling

Format:	Liquid
Buffer:	0.01M PBS, pH 7.4, containing 0.05 % Proclin-300, 50 % glycerol.
Preservative:	ProClin
Precaution of Use:	This product contains ProClin: a POISONOUS AND HAZARDOUS SUBSTANCE which should be handled by trained staff only.
Storage:	4 °C,-20 °C
Storage Comment:	Store at 4°C for frequent use. Stored at -20°C in a manual defrost freezer for two year without detectable loss of activity. Avoid repeated freeze-thaw cycles.
Expiry Date:	24 months



Immunohistochemistry

Image 1. Detection of INV in Mouse Lymph node Tissue using Polyclonal Antibody to Involucrin (INV)



Western Blotting

Image 2. Detection of INV in Mouse Serum using Polyclonal Antibody to Involucrin (INV)

Western Blotting

Image 3. Detection of Recombinant iNV, Mouse using Polyclonal Antibody to Involucrin (INV)