



[Go to Product page](#)

Datasheet for ABIN7439270  
**anti-MYL4 antibody (AA 6-191)**

1 Image

### Overview

|                      |  |
|----------------------|--|
| Quantity:            | 100 µL   |
| Target:              | MYL4   |
| Binding Specificity: | AA 6-191   |
| Reactivity:          | Human  |
| Host:                | Rabbit   |
| Clonality:           | Polyclonal   |
| Conjugate:           | This MYL4 antibody is un-conjugated  |
| Application:         | Western Blotting (WB), Immunohistochemistry (IHC), Immunoprecipitation (IP), Immunocytochemistry (ICC) |

### Product Details

|                   |  |
|-------------------|--|
| Purpose:          | Polyclonal Antibody to Myosin Light Chain 4, Alkali, Atrial, Embryonic (MYL4)  |
| Immunogen:        | Recombinant Myosin Light Chain 4, Alkali, Atrial, Embryonic (MYL4) corresponding to Pro6~Val191 (Accession # P12829)   |
| Isotype:          | IgG  |
| Specificity:      | The antibody is a rabbit polyclonal antibody raised against MYL4. It has been selected for its ability to recognize MYL4 in immunohistochemical staining and western blotting. |
| Cross-Reactivity: | Mouse  |
| Purification:     | Antigen-specific affinity chromatography followed by Protein A affinity chromatography   |

## Target Details

---

|                   |   |
|-------------------|---|
| Target:           | MYL4  |
| Alternative Name: | Myosin Light Chain 4, Alkali, Atrial, Embryonic ( <a href="#">MYL4 Products</a> ) |
| Background:       | GT1, ALC1, AMLC, Myosin light chain alkali GT-1 isoform                           |
| Pathways:         | <a href="#">Myometrial Relaxation and Contraction</a>                             |

## Application Details

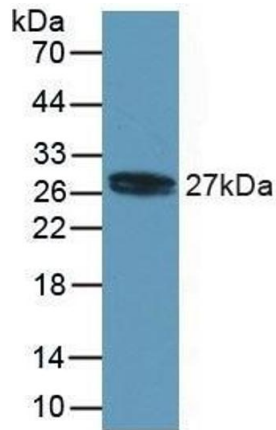
---

|                    |   |
|--------------------|---|
| Application Notes: | Western blotting: 0.5-5 µg/mL Immunohistochemistry: 5-20 µg/mL Immunocytochemistry: 5-20 µg/mL Optimal working dilutions must be determined by end user.  |
| Comment:           | The thermal stability is described by the loss rate. The loss rate was determined by accelerated thermal degradation test, that is, incubate the protein at 37°C for 48h, and no obvious degradation and precipitation were observed. The loss rate is less than 5% within the expiration date under appropriate storage condition. |
| Restrictions:      | For Research Use only   |

## Handling

---

|                    |   |
|--------------------|---|
| Format:            | Liquid  |
| Buffer:            | 0.01M PBS, pH 7.4, containing 0.05 % Proclin-300, 50 % glycerol.  |
| Preservative:      | ProClin   |
| Precaution of Use: | This product contains ProClin: a POISONOUS AND HAZARDOUS SUBSTANCE which should be handled by trained staff only.   |
| Storage:           | 4 °C,-20 °C   |
| Storage Comment:   | Store at 4°C for frequent use. Stored at -20°C in a manual defrost freezer for two year without detectable loss of activity. Avoid repeated freeze-thaw cycles. |
| Expiry Date:       | 24 months   |



### Western Blotting

**Image 1.** Detection of Recombinant MYL4, Human using Polyclonal Antibody to Myosin Light Chain 4, Alkali, Atrial, Embryonic (MYL4)