

Datasheet for ABIN7439282
anti-GP1BB antibody (AA 52-164)

5 Images

[Go to Product page](#)

Overview

| | |
|----------------------|---|
| Quantity: | 100 µL |
| Target: | GP1BB |
| Binding Specificity: | AA 52-164 |
| Reactivity: | Rat |
| Host: | Rabbit |
| Clonality: | Polyclonal |
| Conjugate: | This GP1BB antibody is un-conjugated |
| Application: | Western Blotting (WB), Immunohistochemistry (IHC), Immunoprecipitation (IP), Immunocytochemistry (ICC) |

Product Details

| | |
|---------------|---|
| Purpose: | Polyclonal Antibody to Platelet Glycoprotein Ib Beta Chain (GP1BB) |
| Immunogen: | Recombinant Platelet Glycoprotein Ib Beta Chain (GP1BB) corresponding to Ala52~His164 (Accession # Q9JJM7) |
| Isotype: | IgG |
| Specificity: | The antibody is a rabbit polyclonal antibody raised against GP1BB. It has been selected for its ability to recognize GP1BB in immunohistochemical staining and western blotting. |
| Purification: | Antigen-specific affinity chromatography followed by Protein A affinity chromatography |

Target Details

| | |
|---------|-------|
| Target: | GP1BB |
|---------|-------|

Target Details

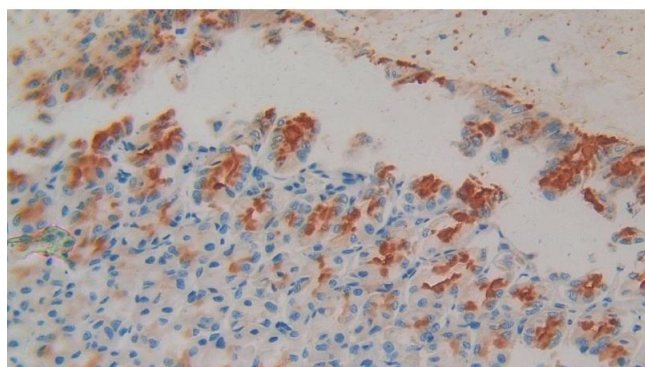
| | |
|-------------------|---|
| Alternative Name: | Platelet Glycoprotein Ib Beta Chain (GP1BB Products) |
| Background: | CD42c,CD42-c, GP1-BB, GPIB-B, GP1Bb, Glycoprotein Ib Beta Polypeptide, Platelet |

Application Details

| | |
|--------------------|---|
| Application Notes: | Western blotting: 0.5-2 µg/mL 1:500-2000 Immunohistochemistry: 5-20 µg/mL 1:50-200 Immunocytochemistry: 5-20 µg/mL 1:50-200 Optimal working dilutions must be determined by end user. |
| Comment: | The thermal stability is described by the loss rate. The loss rate was determined by accelerated thermal degradation test, that is, incubate the protein at 37°C for 48h, and no obvious degradation and precipitation were observed. The loss rate is less than 5% within the expiration date under appropriate storage condition. |
| Restrictions: | For Research Use only |

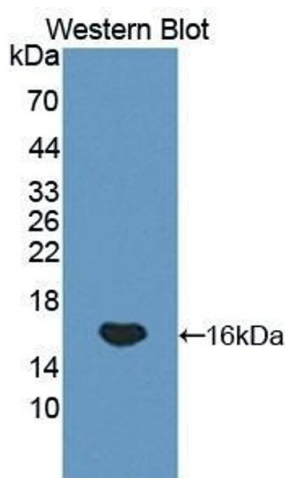
Handling

| | |
|--------------------|---|
| Format: | Liquid |
| Buffer: | PBS, pH 7.4, containing 0.02 % Sodium azide, 50 % glycerol. |
| Preservative: | Sodium azide |
| Precaution of Use: | This product contains Sodium azide: a POISONOUS AND HAZARDOUS SUBSTANCE which should be handled by trained staff only. |
| Storage: | 4 °C,-20 °C |
| Storage Comment: | Store at 4°C for frequent use. Stored at -20°C in a manual defrost freezer for two year without detectable loss of activity. Avoid repeated freeze-thaw cycles. |
| Expiry Date: | 24 months |



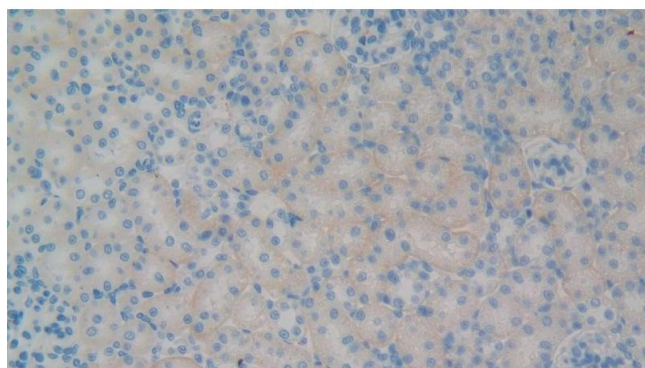
Immunohistochemistry

Image 1. Detection of GP1BB in Rat Stomach Tissue using Polyclonal Antibody to Platelet Glycoprotein Ib Beta Chain (GP1BB)



Western Blotting

Image 2. Detection of Recombinant GP1Bb, Rat using Polyclonal Antibody to Platelet Glycoprotein Ib Beta Chain (GP1BB)



Immunohistochemistry

Image 3. Detection of GP1BB in Rat Kidney Tissue using Polyclonal Antibody to Platelet Glycoprotein Ib Beta Chain (GP1BB)

Please check the [product details page](#) for more images. Overall 5 images are available for ABIN7439282.