

Datasheet for ABIN7439348  
**anti-CLCF1 antibody (AA 28-225)**[Go to Product page](#)

## 2 Images

## Overview

Quantity:	100 µL
Target:	CLCF1
Binding Specificity:	AA 28-225
Reactivity:	Mouse
Host:	Rabbit
Clonality:	Polyclonal
Conjugate:	This CLCF1 antibody is un-conjugated
Application:	Western Blotting (WB), Immunohistochemistry (IHC), Immunoprecipitation (IP), Immunocytochemistry (ICC)

## Product Details

Purpose:	Polyclonal Antibody to Cardiotrophin Like Cytokine Factor 1 (CLCF1)
Immunogen:	Recombinant Cardiotrophin Like Cytokine Factor 1 (CLCF1) corresponding to Leu28~Phe225 with N-terminal His Tag
Isotype:	IgG
Specificity:	The antibody is a rabbit polyclonal antibody raised against CLCF1. It has been selected for its ability to recognize CLCF1 in immunohistochemical staining and western blotting.
Purification:	Antigen-specific affinity chromatography followed by Protein A affinity chromatography

## Target Details

Target:	CLCF1
---------	-------

## Target Details

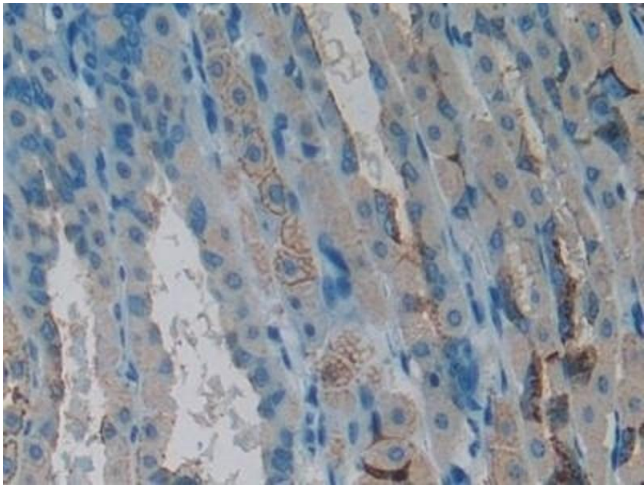
Alternative Name:	Cardiotrophin Like Cytokine Factor 1 ( <a href="#">CLCF1 Products</a> )
Background:	CLC, NR6, BSF3, CISS2, NNT1, Novel Neurotrophin-1, B Cell-Stimulating Factor-3
Pathways:	<a href="#">Regulation of Leukocyte Mediated Immunity</a> , <a href="#">Positive Regulation of Immune Effector Process</a> , <a href="#">Production of Molecular Mediator of Immune Response</a>

## Application Details

Application Notes:	Western blotting: 0.5-2 µg/mL Immunohistochemistry: 5-20 µg/mL Immunocytochemistry: 5-20 µg/mL Optimal working dilutions must be determined by end user.
Comment:	The thermal stability is described by the loss rate. The loss rate was determined by accelerated thermal degradation test, that is, incubate the protein at 37°C for 48h, and no obvious degradation and precipitation were observed. The loss rate is less than 5% within the expiration date under appropriate storage condition.
Restrictions:	For Research Use only

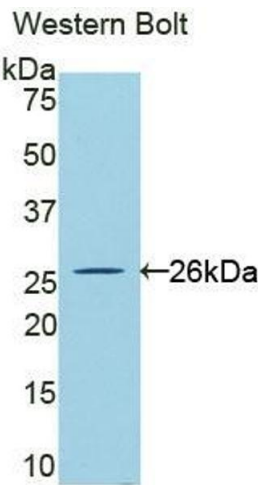
## Handling

Format:	Liquid
Buffer:	PBS, pH 7.4, containing 0.02 % Sodium azide, 50 % glycerol.
Preservative:	Sodium azide
Precaution of Use:	This product contains Sodium azide: a POISONOUS AND HAZARDOUS SUBSTANCE which should be handled by trained staff only.
Storage:	4 °C,-20 °C
Storage Comment:	Store at 4°C for frequent use. Stored at -20°C in a manual defrost freezer for two year without detectable loss of activity. Avoid repeated freeze-thaw cycles.
Expiry Date:	24 months



Immunohistochemistry

**Image 1.** Detection of CLCF1 in Mouse Stomach Tissue using Polyclonal Antibody to Cardiotrophin Like Cytokine Factor 1 (CLCF1)



Western Blotting

**Image 2.** Detection of Recombinant CLCF1, Mouse using Polyclonal Antibody to Cardiotrophin Like Cytokine Factor 1 (CLCF1)