

Datasheet for ABIN7439360
anti-CD3 epsilon antibody (AA 28-185)[Go to Product page](#)

4 Images

Overview

| | |
|----------------------|--|
| Quantity: | 100 µL |
| Target: | CD3 epsilon (CD3E) |
| Binding Specificity: | AA 28-185 |
| Reactivity: | Human |
| Host: | Rabbit |
| Clonality: | Polyclonal |
| Conjugate: | This CD3 epsilon antibody is un-conjugated |
| Application: | Western Blotting (WB), Immunohistochemistry (IHC), Immunoprecipitation (IP), Immunocytochemistry (ICC) |

Product Details

| | |
|-------------------|--|
| Purpose: | Polyclonal Antibody to T-Cell Surface Glycoprotein CD3 Epsilon (CD3e) |
| Immunogen: | Recombinant T-Cell Surface Glycoprotein CD3 Epsilon (CD3e) corresponding to Met28~Asn185 with N-terminal His Tag |
| Isotype: | IgG |
| Specificity: | The antibody is a rabbit polyclonal antibody raised against CD3e. It has been selected for its ability to recognize CD3e in immunohistochemical staining and western blotting. |
| Cross-Reactivity: | Pig |
| Purification: | Antigen-specific affinity chromatography followed by Protein A affinity chromatography |

Target Details

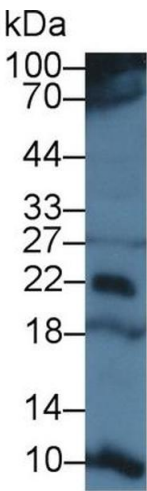
| | |
|-------------------|--|
| Target: | CD3 epsilon (CD3E) |
| Alternative Name: | T-Cell Surface Glycoprotein CD3 Epsilon (CD3E Products) |
| Background: | T3E, TCRE, CD3-E Molecule,Epsilon(CD3-TCR Complex), T-cell surface antigen T3/Leu-4 epsilon chain |
| Pathways: | TCR Signaling , CXCR4-mediated Signaling Events , Ubiquitin Proteasome Pathway |

Application Details

| | |
|--------------------|---|
| Application Notes: | Western blotting: 0.5-3 µg/mL Immunohistochemistry: 5-30 µg/mL Immunocytochemistry: 5-30 µg/mL Optimal working dilutions must be determined by end user. |
| Comment: | The thermal stability is described by the loss rate. The loss rate was determined by accelerated thermal degradation test, that is, incubate the protein at 37°C for 48h, and no obvious degradation and precipitation were observed. The loss rate is less than 5% within the expiration date under appropriate storage condition. |
| Restrictions: | For Research Use only |

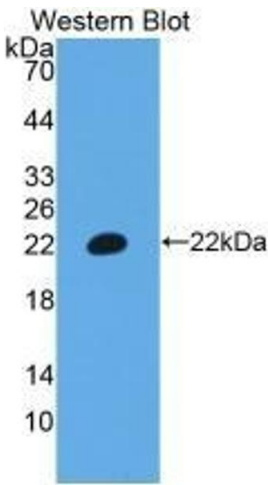
Handling

| | |
|--------------------|---|
| Format: | Liquid |
| Buffer: | PBS, pH 7.4, containing 0.02 % Sodium azide, 50 % glycerol. |
| Preservative: | Sodium azide |
| Precaution of Use: | This product contains Sodium azide: a POISONOUS AND HAZARDOUS SUBSTANCE which should be handled by trained staff only. |
| Storage: | 4 °C,-20 °C |
| Storage Comment: | Store at 4°C for frequent use. Stored at -20°C in a manual defrost freezer for two year without detectable loss of activity. Avoid repeated freeze-thaw cycles. |
| Expiry Date: | 24 months |



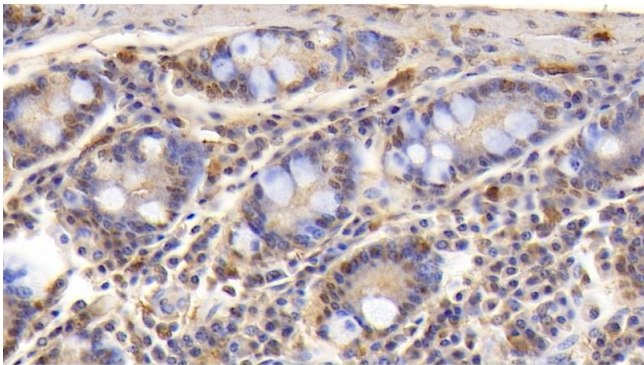
Western Blotting

Image 1. Detection of CD3e in Human Jurkat cell lysate using Polyclonal Antibody to T-Cell Surface Glycoprotein CD3 Epsilon (CD3e)



Western Blotting

Image 2. Detection of Recombinant CD3e, Human using Polyclonal Antibody to T-Cell Surface Glycoprotein CD3 Epsilon (CD3e)



Immunohistochemistry

Image 3. Detection of CD3e in Human Small intestine Tissue using Polyclonal Antibody to T-Cell Surface Glycoprotein CD3 Epsilon (CD3e)

Please check the [product details page](#) for more images. Overall 4 images are available for ABIN7439360.