



[Go to Product page](#)

Datasheet for ABIN7439381  
**anti-LAG3 antibody (AA 244-487)**

2 Images

### Overview

|                      |  |
|----------------------|--|
| Quantity:            | 100 µL   |
| Target:              | LAG3   |
| Binding Specificity: | AA 244-487   |
| Reactivity:          | Human  |
| Host:                | Rabbit   |
| Clonality:           | Polyclonal   |
| Conjugate:           | This LAG3 antibody is un-conjugated  |
| Application:         | Western Blotting (WB), Immunohistochemistry (IHC), Immunoprecipitation (IP), Immunocytochemistry (ICC) |

### Product Details

|               |  |
|---------------|--|
| Purpose:      | Polyclonal Antibody to Lymphocyte Activation Gene 3 (LAG3)   |
| Immunogen:    | Recombinant Lymphocyte Activation Gene 3 (LAG3) corresponding to Thr244~Glu487 with N-terminal His Tag   |
| Isotype:      | IgG  |
| Specificity:  | The antibody is a rabbit polyclonal antibody raised against LAG3. It has been selected for its ability to recognize LAG3 in immunohistochemical staining and western blotting. |
| Purification: | Antigen-specific affinity chromatography followed by Protein A affinity chromatography   |

### Target Details

|         |      |
|---------|------|
| Target: | LAG3 |
|---------|------|

## Target Details

---

|                   |  |
|-------------------|--|
| Alternative Name: | Lymphocyte Activation Gene 3 ( <a href="#">LAG3 Products</a> )   |
| Background:       | CD223, Protein FDC   |
| Pathways:         | <a href="#">Regulation of Leukocyte Mediated Immunity</a> , <a href="#">Positive Regulation of Immune Effector Process</a> , <a href="#">Cancer Immune Checkpoints</a> |

## Application Details

---

|                    |   |
|--------------------|---|
| Application Notes: | Western blotting: 0.5-2 µg/mL<br>1:330-1300 Immunohistochemistry: 5-20 µg/mL<br>1:33-130 Immunocytochemistry: 5-20 µg/mL<br>1:33-130 Optimal working dilutions must be determined by end user.  |
| Comment:           | The thermal stability is described by the loss rate. The loss rate was determined by accelerated thermal degradation test, that is, incubate the protein at 37°C for 48h, and no obvious degradation and precipitation were observed. The loss rate is less than 5% within the expiration date under appropriate storage condition. |
| Restrictions:      | For Research Use only   |

## Handling

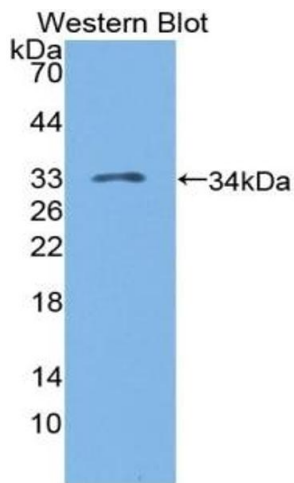
---

|                    |   |
|--------------------|---|
| Format:            | Liquid  |
| Buffer:            | 0.01M PBS, pH 7.4, containing 0.05 % Proclin-300, 50 % glycerol.  |
| Preservative:      | ProClin   |
| Precaution of Use: | This product contains ProClin: a POISONOUS AND HAZARDOUS SUBSTANCE which should be handled by trained staff only.   |
| Storage:           | 4 °C,-20 °C   |
| Storage Comment:   | Store at 4°C for frequent use. Stored at -20°C in a manual defrost freezer for two year without detectable loss of activity. Avoid repeated freeze-thaw cycles. |
| Expiry Date:       | 24 months   |



#### Western Blotting

**Image 1.** Detection of LAG3 in Human Jurkat cell lysate using Polyclonal Antibody to Lymphocyte Activation Gene 3 (LAG3)



#### Western Blotting

**Image 2.** Detection of Recombinant LAG3, Human using Polyclonal Antibody to Lymphocyte Activation Gene 3 (LAG3)