

Datasheet for ABIN7439417  
**anti-ITGB1 antibody (AA 454-714)**

## 3 Images

[Go to Product page](#)

## Overview

Quantity:	100 µL
Target:	ITGB1
Binding Specificity:	AA 454-714
Reactivity:	Mouse
Host:	Rabbit
Clonality:	Polyclonal
Conjugate:	This ITGB1 antibody is un-conjugated
Application:	Western Blotting (WB), Immunohistochemistry (IHC), Immunoprecipitation (IP), Immunocytochemistry (ICC)

## Product Details

Purpose:	Polyclonal Antibody to Integrin Beta 1 (ITGb1)
Immunogen:	Recombinant Integrin Beta 1 (ITGb1) corresponding to Val454~Ile714 with N-terminal His Tag
Isotype:	IgG
Specificity:	The antibody is a rabbit polyclonal antibody raised against ITGb1. It has been selected for its ability to recognize ITGb1 in immunohistochemical staining and western blotting.
Purification:	Antigen-specific affinity chromatography followed by Protein A affinity chromatography

## Target Details

Target:	ITGB1
---------	-------

## Target Details

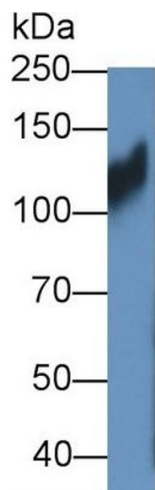
Alternative Name:	Integrin Beta 1 ( <a href="#">ITGB1 Products</a> )
Background:	CD29, MSK12, ITG-B1, FNRR, GPIIA, MDF2, MSK12, VLAB, Fibronectin Receptor Beta Polypeptide, Antigen CD29 Includes MDF2, Glycoprotein IIa, VLA-4 subunit beta
Pathways:	<a href="#">Cell-Cell Junction Organization</a> , <a href="#">Regulation of G-Protein Coupled Receptor Protein Signaling</a> , <a href="#">CXCR4-mediated Signaling Events</a> , <a href="#">Signaling of Hepatocyte Growth Factor Receptor</a> , <a href="#">Integrin Complex</a> , <a href="#">SARS-CoV-2 Protein Interactome</a>

## Application Details

Application Notes:	Western blotting: 0.5-2 µg/mL 1:270-1100 Immunohistochemistry: 5-20 µg/mL 1:27-110 Immunocytochemistry: 5-20 µg/mL 1:27-110 Optimal working dilutions must be determined by end user.
Comment:	The thermal stability is described by the loss rate. The loss rate was determined by accelerated thermal degradation test, that is, incubate the protein at 37°C for 48h, and no obvious degradation and precipitation were observed. The loss rate is less than 5% within the expiration date under appropriate storage condition.
Restrictions:	For Research Use only

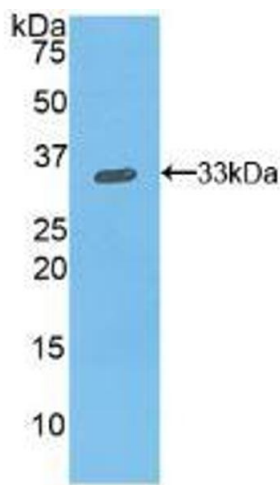
## Handling

Format:	Liquid
Buffer:	PBS, pH 7.4, containing 0.02 % Sodium azide, 50 % glycerol.
Preservative:	Sodium azide
Precaution of Use:	This product contains Sodium azide: a POISONOUS AND HAZARDOUS SUBSTANCE which should be handled by trained staff only.
Storage:	4 °C,-20 °C
Storage Comment:	Store at 4°C for frequent use. Stored at -20°C in a manual defrost freezer for two year without detectable loss of activity. Avoid repeated freeze-thaw cycles.
Expiry Date:	24 months



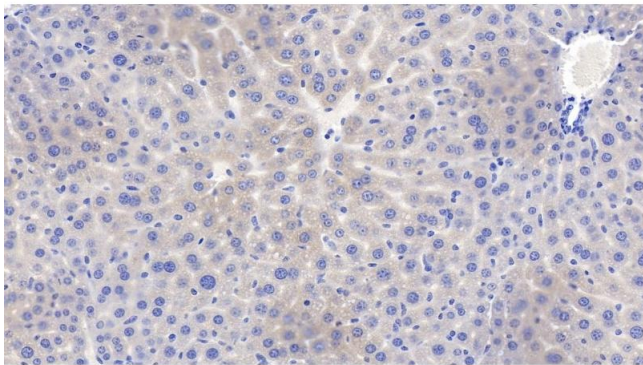
#### Western Blotting

**Image 1.** Detection of ITGb1 in HT1080 cell lysate using Polyclonal Antibody to Integrin Beta 1 (ITGb1)



#### Western Blotting

**Image 2.** Detection of Recombinant ITGb1, Mouse using Polyclonal Antibody to Integrin Beta 1 (ITGb1)



#### Immunohistochemistry

**Image 3.** Detection of ITGb1 in Mouse Liver Tissue using Polyclonal Antibody to Integrin Beta 1 (ITGb1)