

Datasheet for ABIN7439435
anti-NME6 antibody (AA 1-173)



[Go to Product page](#)

8 Images

Overview

Quantity:	100 µL
Target:	NME6
Binding Specificity:	AA 1-173
Reactivity:	Rat
Host:	Rabbit
Clonality:	Polyclonal
Conjugate:	This NME6 antibody is un-conjugated
Application:	Western Blotting (WB), Immunohistochemistry (IHC), Immunocytochemistry (ICC), Immunoprecipitation (IP)

Product Details

Purpose:	Polyclonal Antibody to Non Metastatic Cells 6, Protein Expressed In (NME6)
Immunogen:	Recombinant Non Metastatic Cells 6, Protein Expressed In (NME6) corresponding to Met1~Gly173 with N-terminal His Tag
Isotype:	IgG
Specificity:	The antibody is a rabbit polyclonal antibody raised against NME6. It has been selected for its ability to recognize NME6 in immunohistochemical staining and western blotting.
Purification:	Antigen-specific affinity chromatography followed by Protein A affinity chromatography

Target Details

Target:	NME6
---------	------

Target Details

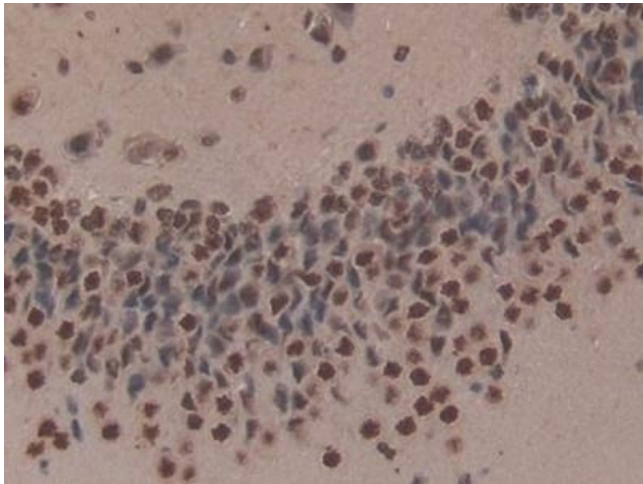
Alternative Name:	NME6 (NME6 Products)
Background:	NM23-H6, IPIA-ALPHA, Nucleoside-Diphosphate Kinase 6, Inhibitor of p53-induced apoptosis-alpha
UniProt:	O88426 , R9PXW5
Pathways:	Nucleotide Phosphorylation , Ribonucleoside Biosynthetic Process

Application Details

Application Notes:	Western blotting: 0.01-5 µg/mL, Immunohistochemistry: 5-20 µg/mL, Immunocytochemistry: 5-20 µg/mL, Optimal working dilutions must be determined by end user.
Comment:	The thermal stability is described by the loss rate. The loss rate was determined by accelerated thermal degradation test, that is, incubate the protein at 37°C for 48h, and no obvious degradation and precipitation were observed. The loss rate is less than 5% within the expiration date under appropriate storage condition.
Restrictions:	For Research Use only

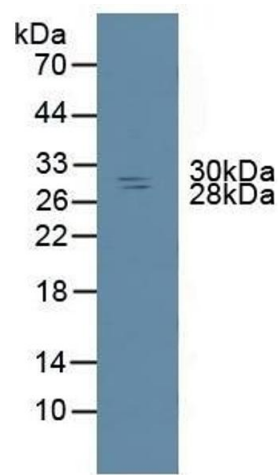
Handling

Format:	Liquid
Concentration:	500 µg/mL
Buffer:	PBS, pH 7.4, containing 0.02 % Sodium azide, 50 % glycerol.
Preservative:	Sodium azide
Precaution of Use:	This product contains Sodium azide: a POISONOUS AND HAZARDOUS SUBSTANCE which should be handled by trained staff only.
Storage:	4 °C, -20 °C
Storage Comment:	Store at 4°C for frequent use. Stored at -20°C in a manual defrost freezer for two year without detectable loss of activity. Avoid repeated freeze-thaw cycles.
Expiry Date:	24 months



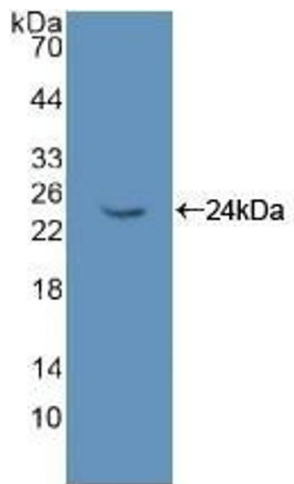
Immunohistochemistry

Image 1. Detection of NME6 in Rat Cerebrum Tissue using Polyclonal Antibody to Non Metastatic Cells 6, Protein Expressed In (NME6)



Western Blotting

Image 2. Detection of NME6 in Rat Spleen Tissue using Polyclonal Antibody to Non Metastatic Cells 6, Protein Expressed In (NME6)



Western Blotting

Image 3. Detection of Recombinant NME6, Rat using Polyclonal Antibody to Non Metastatic Cells 6, Protein Expressed In (NME6)

Please check the [product details page](#) for more images. Overall 8 images are available for ABIN7439435.