

Datasheet for ABIN7439438
anti-Oncomodulin antibody (AA 1-109)[Go to Product page](#)

3 Images

Overview

Quantity:	100 µL
Target:	Oncomodulin (OCM)
Binding Specificity:	AA 1-109
Reactivity:	Rat
Host:	Rabbit
Clonality:	Polyclonal
Conjugate:	This Oncomodulin antibody is un-conjugated
Application:	Western Blotting (WB), Immunohistochemistry (IHC), Immunoprecipitation (IP), Immunocytochemistry (ICC)

Product Details

Purpose:	Polyclonal Antibody to Oncomodulin (OCM)
Immunogen:	Recombinant Oncomodulin (OCM) corresponding to Met1~Ser109 with N-terminal His Tag
Isotype:	IgG
Specificity:	The antibody is a rabbit polyclonal antibody raised against OCM. It has been selected for its ability to recognize OCM in immunohistochemical staining and western blotting.
Purification:	Antigen-specific affinity chromatography followed by Protein A affinity chromatography

Target Details

Target:	Oncomodulin (OCM)
---------	-------------------

Target Details

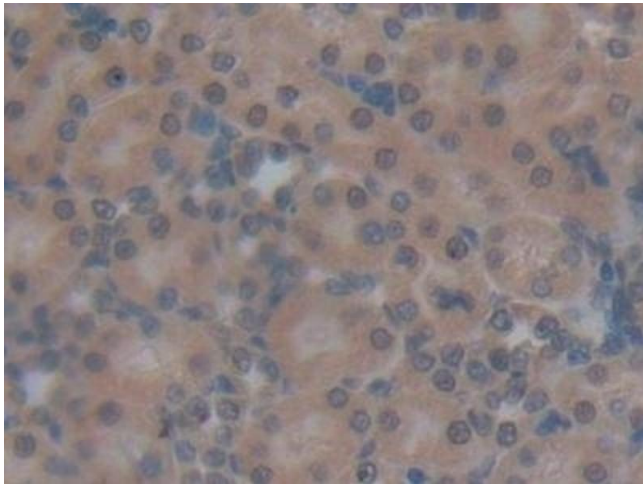
Alternative Name:	Oncomodulin (OCM Products)
Background:	OCM1, OCMN, OM, Parvalbumin beta

Application Details

Application Notes:	Western blotting: 0.5-2 µg/mL Immunohistochemistry: 5-20 µg/mL Immunocytochemistry: 5-20 µg/mL Optimal working dilutions must be determined by end user.
Comment:	The thermal stability is described by the loss rate. The loss rate was determined by accelerated thermal degradation test, that is, incubate the protein at 37°C for 48h, and no obvious degradation and precipitation were observed. The loss rate is less than 5% within the expiration date under appropriate storage condition.
Restrictions:	For Research Use only

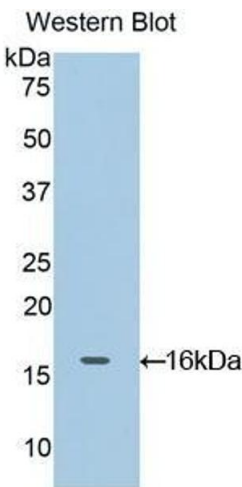
Handling

Format:	Liquid
Buffer:	0.01M PBS, pH 7.4, containing 0.05 % Proclin-300, 50 % glycerol.
Preservative:	ProClin
Precaution of Use:	This product contains ProClin: a POISONOUS AND HAZARDOUS SUBSTANCE which should be handled by trained staff only.
Storage:	4 °C,-20 °C
Storage Comment:	Store at 4°C for frequent use. Stored at -20°C in a manual defrost freezer for two year without detectable loss of activity. Avoid repeated freeze-thaw cycles.
Expiry Date:	24 months



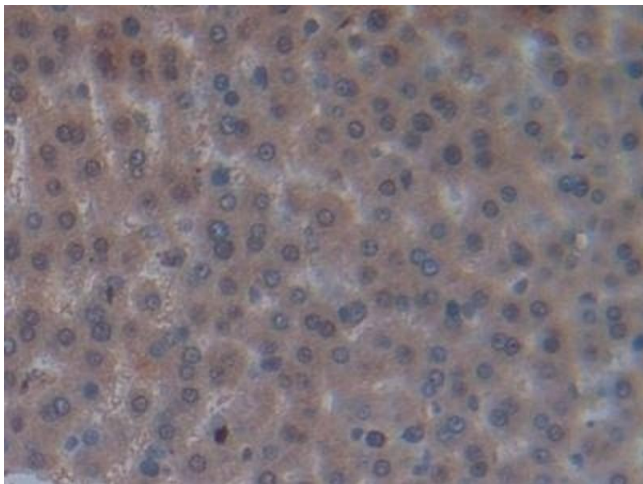
Immunohistochemistry

Image 1. Detection of OCM in Rat Kidney Tissue using Polyclonal Antibody to Oncomodulin (OCM)



Western Blotting

Image 2. Detection of Recombinant OCM, Rat using Polyclonal Antibody to Oncomodulin (OCM)



Immunohistochemistry

Image 3. Detection of OCM in Rat Liver Tissue using Polyclonal Antibody to Oncomodulin (OCM)