

Datasheet for ABIN7439540  
**anti-Patched 1 antibody (AA 213-422)**[Go to Product page](#)

## 4 Images

## Overview

Quantity:	100 µL
Target:	Patched 1 (PTCH1)
Binding Specificity:	AA 213-422
Reactivity:	Mouse
Host:	Rabbit
Clonality:	Polyclonal
Conjugate:	This Patched 1 antibody is un-conjugated
Application:	Western Blotting (WB), Immunohistochemistry (IHC), Immunocytochemistry (ICC), Immunoprecipitation (IP)

## Product Details

Purpose:	Polyclonal Antibody to Patched Homolog 1 (PTCH1)
Immunogen:	Recombinant Patched Homolog 1 (PTCH1) corresponding to Leu213~Asp422 with N-terminal His Tag
Isotype:	IgG
Specificity:	The antibody is a rabbit polyclonal antibody raised against PTCH1. It has been selected for its ability to recognize PTCH1 in immunohistochemical staining and western blotting.
Purification:	Antigen-specific affinity chromatography followed by Protein A affinity chromatography

## Target Details

Target:	Patched 1 (PTCH1)
---------	-------------------

## Target Details

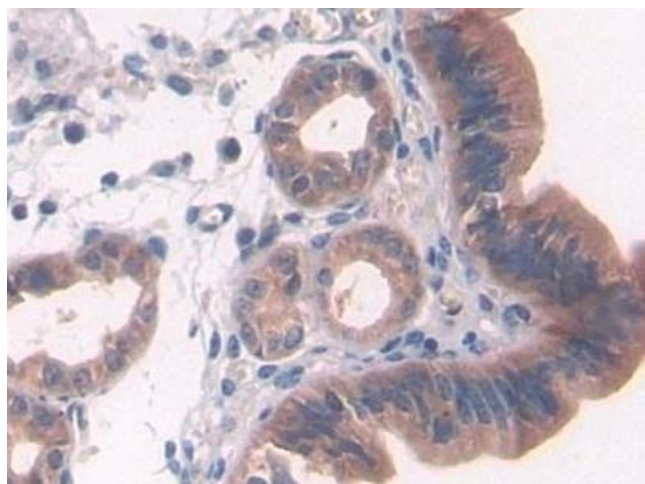
Alternative Name:	Patched Homolog 1 ( <a href="#">PTCH1 Products</a> )
Background:	PTC, BCNS, HPE7, NBCCS, PTC1, PTCH
Pathways:	<a href="#">Hedgehog Signaling</a> , <a href="#">Carbohydrate Homeostasis</a> , <a href="#">Tube Formation</a>

## Application Details

Application Notes:	Western blotting: 0.5-3 µg/mL Immunohistochemistry: 5-30 µg/mL Immunocytochemistry: 5-30 µg/mL Optimal working dilutions must be determined by end user.
Comment:	The thermal stability is described by the loss rate. The loss rate was determined by accelerated thermal degradation test, that is, incubate the protein at 37°C for 48h, and no obvious degradation and precipitation were observed. The loss rate is less than 5% within the expiration date under appropriate storage condition.
Restrictions:	For Research Use only

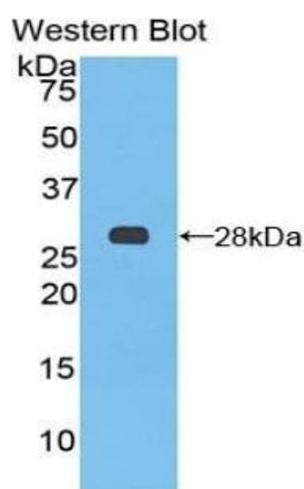
## Handling

Format:	Liquid
Buffer:	PBS, pH 7.4, containing 0.02 % Sodium azide, 50 % glycerol.
Preservative:	Sodium azide
Precaution of Use:	This product contains Sodium azide: a POISONOUS AND HAZARDOUS SUBSTANCE which should be handled by trained staff only.
Storage:	4 °C,-20 °C
Storage Comment:	Store at 4°C for frequent use. Stored at -20°C in a manual defrost freezer for two year without detectable loss of activity. Avoid repeated freeze-thaw cycles.
Expiry Date:	24 months



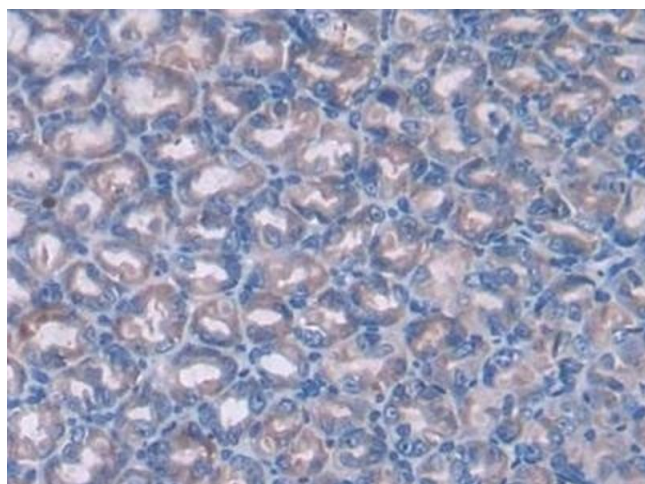
#### Immunohistochemistry

**Image 1.** Detection of PTCH1 in Mouse Uterus Tissue using Polyclonal Antibody to Patched Homolog 1 (PTCH1)



#### Western Blotting

**Image 2.** Detection of Recombinant PTCH1, Mouse using Polyclonal Antibody to Patched Homolog 1 (PTCH1)



#### Immunohistochemistry

**Image 3.** Detection of PTCH1 in Mouse Stomach Tissue using Polyclonal Antibody to Patched Homolog 1 (PTCH1)

Please check the [product details page](#) for more images. Overall 4 images are available for ABIN7439540.