

Datasheet for ABIN7439591  
**anti-MYL6B antibody (AA 6-137)**

## 5 Images

[Go to Product page](#)

## Overview

Quantity:	100 µL
Target:	MYL6B
Binding Specificity:	AA 6-137
Reactivity:	Rat
Host:	Rabbit
Clonality:	Polyclonal
Conjugate:	This MYL6B antibody is un-conjugated
Application:	Western Blotting (WB), Immunohistochemistry (IHC), Immunoprecipitation (IP), Immunocytochemistry (ICC)

## Product Details

Purpose:	Polyclonal Antibody to Myosin Light Chain 6B, Alkali, Smooth Muscle And Non Muscle (MYL6B)
Immunogen:	Recombinant Myosin Light Chain 6B, Alkali, Smooth Muscle And Non Muscle (MYL6B) correspondong to Glu6~Gly137 (Accession # G3V9A2) with N-terminal His and GST Tag
Isotype:	IgG
Specificity:	The antibody is a rabbit polyclonal antibody raised against MYL6B. It has been selected for its ability to recognize MYL6B in immunohistochemical staining and western blotting.
Purification:	Antigen-specific affinity chromatography followed by Protein A affinity chromatography

## Target Details

Target:	MYL6B
---------	-------

## Target Details

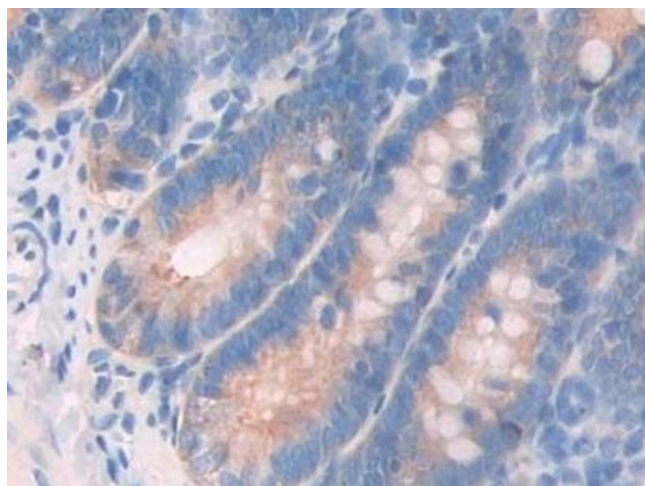
Alternative Name:	Myosin Light Chain 6B, Alkali, Smooth Muscle And Non Muscle ( <a href="#">MYL6B Products</a> )
Background:	MLC1SA, Myosin Light Chain 1 Slow A, Myosin light chain 1 slow-twitch muscle A isoform, Smooth muscle and nonmuscle myosin light chain alkali 6B

## Application Details

Application Notes:	Western blotting: 0.5-2 µg/mL 1:170-680 Immunohistochemistry: 5-20 µg/mL 1:17-68 Immunocytochemistry: 5-20 µg/mL 1:17-68 Optimal working dilutions must be determined by end user.
Comment:	The thermal stability is described by the loss rate. The loss rate was determined by accelerated thermal degradation test, that is, incubate the protein at 37°C for 48h, and no obvious degradation and precipitation were observed. The loss rate is less than 5% within the expiration date under appropriate storage condition.
Restrictions:	For Research Use only

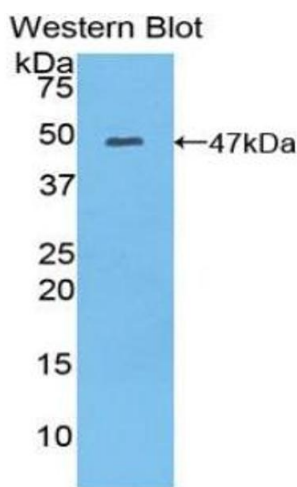
## Handling

Format:	Liquid
Buffer:	0.01M PBS, pH 7.4, containing 0.05 % Proclin-300, 50 % glycerol.
Preservative:	ProClin
Precaution of Use:	This product contains ProClin: a POISONOUS AND HAZARDOUS SUBSTANCE which should be handled by trained staff only.
Storage:	4 °C,-20 °C
Storage Comment:	Store at 4°C for frequent use. Stored at -20°C in a manual defrost freezer for two year without detectable loss of activity. Avoid repeated freeze-thaw cycles.
Expiry Date:	24 months



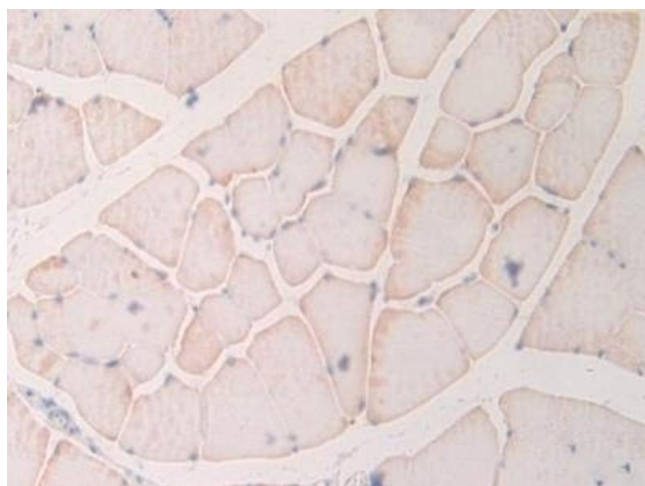
#### Immunohistochemistry

**Image 1.** Detection of MYL6B in Rat Small intestine Tissue using Polyclonal Antibody to Myosin Light Chain 6B, Alkali, Smooth Muscle And Non Muscle (MYL6B)



#### Western Blotting

**Image 2.** Detection of Recombinant MYL6B, Rat using Polyclonal Antibody to Myosin Light Chain 6B, Alkali, Smooth Muscle And Non Muscle (MYL6B)



#### Immunohistochemistry

**Image 3.** Detection of MYL6B in Rat Skeletal muscle Tissue using Polyclonal Antibody to Myosin Light Chain 6B, Alkali, Smooth Muscle And Non Muscle (MYL6B)

Please check the [product details page](#) for more images. Overall 5 images are available for ABIN7439591.