

Datasheet for ABIN743963

anti-MAP3K11 antibody (pSer281, pThr277)**2** Images[Go to Product page](#)

Overview

Quantity:	100 µL
Target:	MAP3K11
Binding Specificity:	pSer281, pThr277
Reactivity:	Human, Mouse, Rat
Host:	Rabbit
Clonality:	Polyclonal
Conjugate:	This MAP3K11 antibody is un-conjugated
Application:	ELISA, Western Blotting (WB), Immunofluorescence (Cultured Cells) (IF (cc)), Immunofluorescence (Paraffin-embedded Sections) (IF (p)), Immunohistochemistry (Paraffin-embedded Sections) (IHC (p)), Immunohistochemistry (Frozen Sections) (IHC (fro)), Flow Cytometry (FACS)

Product Details

Immunogen:	KLH conjugated synthetic phosphopeptide derived from human MLK3 around the phosphorylation site of Thr277/Ser281
Isotype:	IgG
Cross-Reactivity:	Human, Mouse, Rat
Predicted Reactivity:	Dog,Cow,Pig,Rabbit,Guinea Pig
Purification:	Purified by Protein A.

Target Details

Target:	MAP3K11
Alternative Name:	MLK3 + (MAP3K11 Products)
Background:	<p>Synonyms: MLK3, PTK1, SPRK, MLK-3, MEKK11, Mitogen-activated protein kinase kinase 11, Mixed lineage kinase 3, Src-homology 3 domain-containing proline-rich kinase, MAP3K11</p> <p>Background: Activates the JUN N-terminal pathway. Required for serum-stimulated cell proliferation and for mitogen and cytokine activation of MAPK14 (p38), MAPK3 (ERK) and MAPK8 (JNK1) through phosphorylation and activation of MAP2K4/MKK4 and MAP2K7/MKK7. Plays a role in mitogen-stimulated phosphorylation and activation of BRAF, but does not phosphorylate BRAF directly. Influences microtubule organization during the cell cycle.</p>
Gene ID:	4296
UniProt:	Q16584
Pathways:	MAPK Signaling , Interferon-gamma Pathway

Application Details

Application Notes:	WB 1:300-5000 ELISA 1:500-1000 FCM 1:20-100 IHC-P 1:200-400 IHC-F 1:100-500 IF(IHC-P) 1:50-200 IF(IHC-F) 1:50-200 IF(ICC) 1:50-200
Restrictions:	For Research Use only

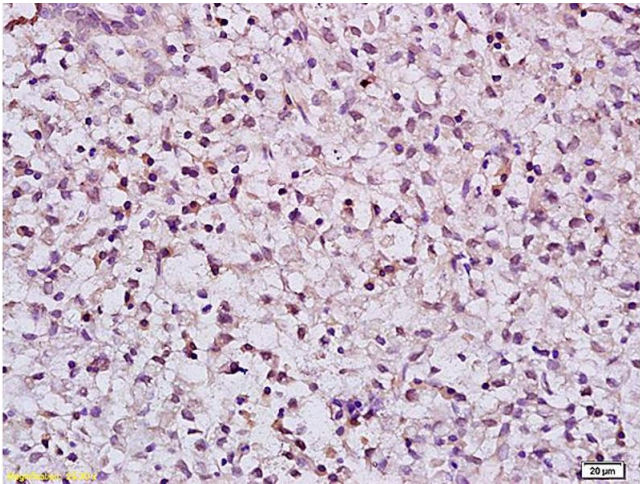
Handling

Format:	Liquid
Concentration:	1 µg/µL
Buffer:	0.01M TBS(pH 7.4) with 1 % BSA, 0.02 % Proclin300 and 50 % Glycerol.
Preservative:	ProClin
Precaution of Use:	This product contains ProClin: a POISONOUS AND HAZARDOUS SUBSTANCE, which should be

Handling

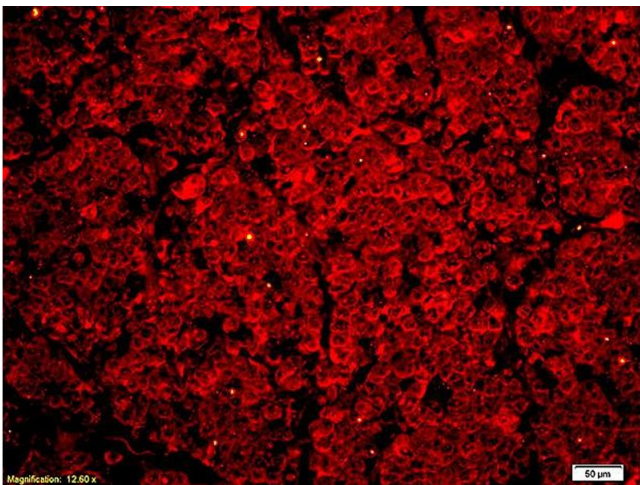
	handled by trained staff only.
Storage:	4 °C,-20 °C
Storage Comment:	Shipped at 4°C. Store at -20°C for one year. Avoid repeated freeze/thaw cycles.
Expiry Date:	12 months

Images



Immunohistochemistry

Image 1. Formalin-fixed and paraffin embedded human gastric carcinoma labeled with Anti Phospho-MLK3(Thr277/Ser281) Polyclonal Antibody, Unconjugated (ABIN743963) at 1:200 followed by conjugation to the secondary antibody and DAB staining



Immunofluorescence

Image 2. Formalin-fixed and paraffin embedded human lung carcinoma labeled with Anti Phospho-MLK3 (Thr277/Ser281) Polyclonal Antibody, Unconjugated at 1:200 followed by conjugation to the secondary antibody Goat Anti-Rabbit IgG, Cy3 conjugated used at 1:200 dilution for 40 minutes at 37°C.