

Datasheet for ABIN7439738  
**anti-PSMD2 antibody (AA 645-872)**

## 8 Images

[Go to Product page](#)

## Overview

Quantity:	100 µL
Target:	PSMD2
Binding Specificity:	AA 645-872
Reactivity:	Human
Host:	Rabbit
Clonality:	Polyclonal
Conjugate:	This PSMD2 antibody is un-conjugated
Application:	Western Blotting (WB), Immunohistochemistry (IHC), Immunoprecipitation (IP), Immunocytochemistry (ICC)

## Product Details

Purpose:	Polyclonal Antibody to Proteasome 26S Subunit, Non ATPase 2 (PSMD2)
Immunogen:	Recombinant Proteasome 26S Subunit, Non ATPase 2 (PSMD2) corresponding to Asp645~Val872 with N-terminal His Tag
Isotype:	IgG
Specificity:	The antibody is a rabbit polyclonal antibody raised against PSMD2. It has been selected for its ability to recognize PSMD2 in immunohistochemical staining and western blotting.
Cross-Reactivity:	Rat
Purification:	Antigen-specific affinity chromatography followed by Protein A affinity chromatography

## Target Details

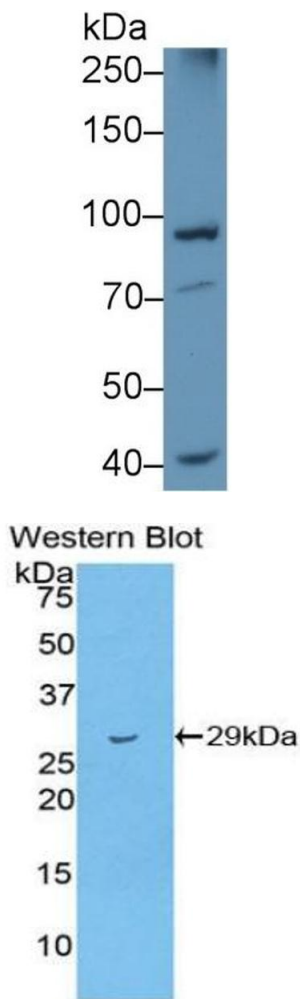
Target:	PSMD2
Alternative Name:	Proteasome 26S Subunit, Non ATPase 2 ( <a href="#">PSMD2 Products</a> )
Background:	P97, S2, TRAP2, Rpn1, Tumor necrosis factor type 1 receptor-associated protein 2, 26S proteasome regulatory subunit RPN1, 26S proteasome subunit p97
Pathways:	<a href="#">Mitotic G1-G1/S Phases</a> , <a href="#">DNA Replication</a> , <a href="#">Synthesis of DNA</a> , <a href="#">Ubiquitin Proteasome Pathway</a>

## Application Details

Application Notes:	Western blotting: 0.5-2 µg/mL Immunohistochemistry: 5-20 µg/mL Immunocytochemistry: 5-20 µg/mL Optimal working dilutions must be determined by end user.
Comment:	The thermal stability is described by the loss rate. The loss rate was determined by accelerated thermal degradation test, that is, incubate the protein at 37°C for 48h, and no obvious degradation and precipitation were observed. The loss rate is less than 5% within the expiration date under appropriate storage condition.
Restrictions:	For Research Use only

## Handling

Format:	Liquid
Buffer:	PBS, pH 7.4, containing 0.02 % Sodium azide, 50 % glycerol.
Preservative:	Sodium azide
Precaution of Use:	This product contains Sodium azide: a POISONOUS AND HAZARDOUS SUBSTANCE which should be handled by trained staff only.
Storage:	4 °C,-20 °C
Storage Comment:	Store at 4°C for frequent use. Stored at -20°C in a manual defrost freezer for two year without detectable loss of activity. Avoid repeated freeze-thaw cycles.
Expiry Date:	24 months

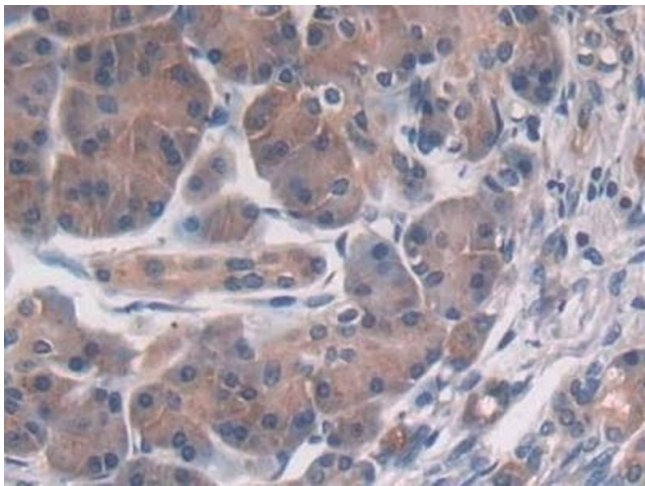


#### Western Blotting

**Image 1.** Detection of PSMD2 in Rat Cerebrum lysate using Polyclonal Antibody to Proteasome 26S Subunit, Non ATPase 2 (PSMD2)

#### Western Blotting

**Image 2.** Detection of Recombinant PSMD2, Human using Polyclonal Antibody to Proteasome 26S Subunit, Non ATPase 2 (PSMD2)



#### Immunohistochemistry

**Image 3.** Detection of PSMD2 in Human Pancreas Tissue using Polyclonal Antibody to Proteasome 26S Subunit, Non ATPase 2 (PSMD2)

Please check the [product details page](#) for more images. Overall 8 images are available for ABIN7439738.