



Datasheet for ABIN7439774  
**anti-LAT2 antibody (AA 30-209)**



[Go to Product page](#)

6 Images

### Overview

Quantity:	100 µL
Target:	LAT2
Binding Specificity:	AA 30-209
Reactivity:	Human
Host:	Rabbit
Clonality:	Polyclonal
Conjugate:	This LAT2 antibody is un-conjugated
Application:	Western Blotting (WB), Immunohistochemistry (IHC), Immunoprecipitation (IP), Immunocytochemistry (ICC)

### Product Details

Purpose:	Polyclonal Antibody to Linker For Activation Of T-Cells Family, Member 2 (LAT2)
Immunogen:	Recombinant Linker For Activation Of T-Cells Family, Member 2 (LAT2) corresponding to Arg30~Met209 (Accession # Q9GZY6)
Isotype:	IgG
Specificity:	The antibody is a rabbit polyclonal antibody raised against LAT2. It has been selected for its ability to recognize LAT2 in immunohistochemical staining and western blotting.
Purification:	Antigen-specific affinity chromatography followed by Protein A affinity chromatography

### Target Details

Target:	LAT2
---------	------

## Target Details

---

Alternative Name:	Linker For Activation Of T-Cells Family, Member 2 ( <a href="#">LAT2 Products</a> )
Background:	WBSCR15, WBSCR5, WSCR5, HSPC046, LAB, NTAL, Williams-Beuren Syndrome Chromosome Region 5, Linker For Activation Of B Cells, Non-T Cell Activation Linker
Pathways:	<a href="#">Fc-epsilon Receptor Signaling Pathway</a> , <a href="#">BCR Signaling</a>

## Application Details

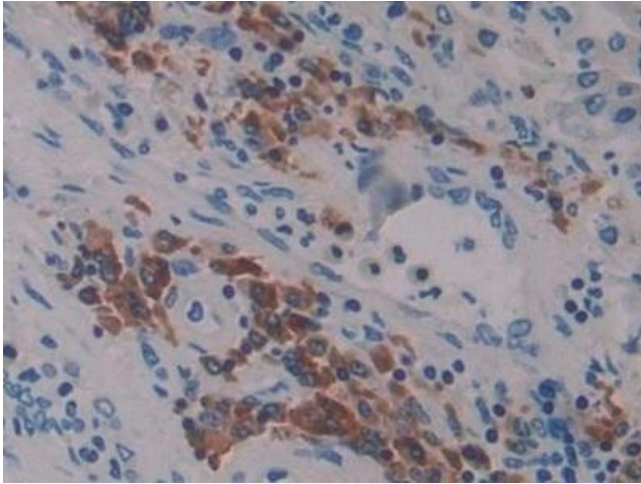
---

Application Notes:	Western blotting: 0.5-2 µg/mL Immunohistochemistry: 5-20 µg/mL Immunocytochemistry: 5-20 µg/mL Optimal working dilutions must be determined by end user.
Comment:	The thermal stability is described by the loss rate. The loss rate was determined by accelerated thermal degradation test, that is, incubate the protein at 37°C for 48h, and no obvious degradation and precipitation were observed. The loss rate is less than 5% within the expiration date under appropriate storage condition.
Restrictions:	For Research Use only

## Handling

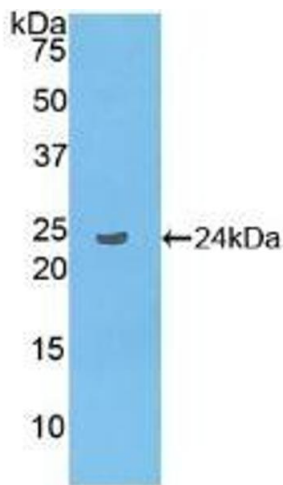
---

Format:	Liquid
Buffer:	0.01M PBS, pH 7.4, containing 0.05 % Proclin-300, 50 % glycerol.
Preservative:	ProClin
Precaution of Use:	This product contains ProClin: a POISONOUS AND HAZARDOUS SUBSTANCE which should be handled by trained staff only.
Storage:	4 °C,-20 °C
Storage Comment:	Store at 4°C for frequent use. Stored at -20°C in a manual defrost freezer for two year without detectable loss of activity. Avoid repeated freeze-thaw cycles.
Expiry Date:	24 months



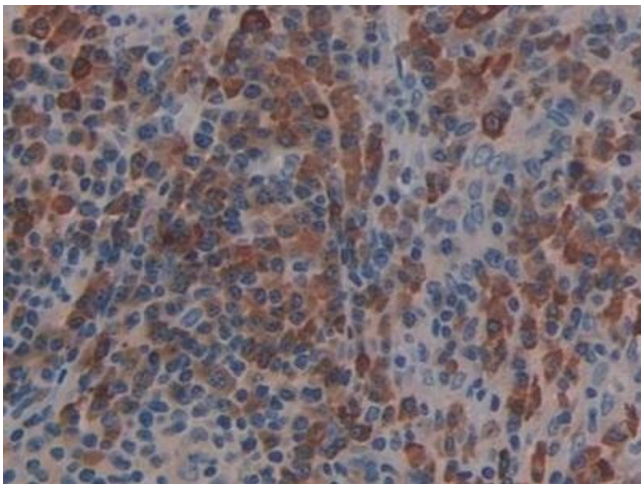
#### Immunohistochemistry

**Image 1.** Detection of LAT2 in Human Lung cancer Tissue using Polyclonal Antibody to Linker For Activation Of T-Cells Family, Member 2 (LAT2)



#### Western Blotting

**Image 2.** Detection of Recombinant LAT2, Human using Polyclonal Antibody to Linker For Activation Of T-Cells Family, Member 2 (LAT2)



#### Immunohistochemistry

**Image 3.** Detection of LAT2 in Human Skin cancer Tissue using Polyclonal Antibody to Linker For Activation Of T-Cells Family, Member 2 (LAT2)

Please check the [product details page](#) for more images. Overall 6 images are available for ABIN7439774.