

Datasheet for ABIN7439777
anti-LAT2 antibody (AA 32-192)

2 Images

[Go to Product page](#)

Overview

Quantity:	100 µL
Target:	LAT2
Binding Specificity:	AA 32-192
Reactivity:	Rat
Host:	Rabbit
Clonality:	Polyclonal
Conjugate:	This LAT2 antibody is un-conjugated
Application:	Western Blotting (WB), Immunohistochemistry (IHC), Immunoprecipitation (IP), Immunocytochemistry (ICC)

Product Details

Purpose:	Polyclonal Antibody to Linker For Activation Of T-Cells Family, Member 2 (LAT2)
Immunogen:	Recombinant Linker For Activation Of T-Cells Family, Member 2 (LAT2) corresponding to Arg32~Asp192 (Accession # Q8CGL2)
Isotype:	IgG
Specificity:	The antibody is a rabbit polyclonal antibody raised against LAT2. It has been selected for its ability to recognize LAT2 in immunohistochemical staining and western blotting.
Cross-Reactivity:	Human, Mouse
Purification:	Antigen-specific affinity chromatography followed by Protein A affinity chromatography

Target Details

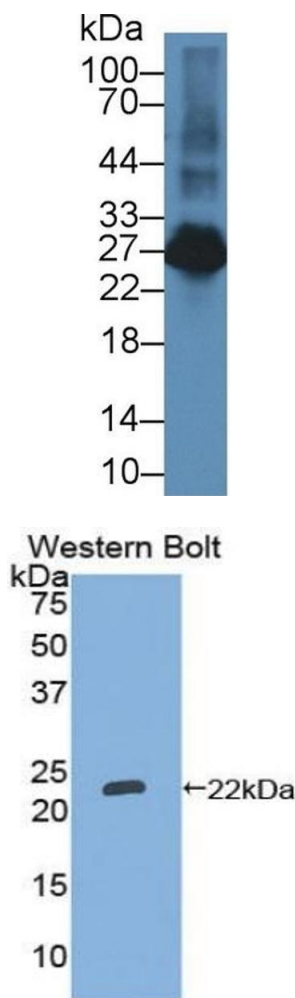
Target:	LAT2
Alternative Name:	Linker For Activation Of T-Cells Family, Member 2 (LAT2 Products)
Background:	WBSCR15, WBSCR5, WSCR5, HSPC046, LAB, NTAL, Williams-Beuren Syndrome Chromosome Region 5, Linker For Activation Of B Cells, Non-T Cell Activation Linker
Pathways:	Fc-epsilon Receptor Signaling Pathway , BCR Signaling

Application Details

Application Notes:	Western blotting: 0.5-2 µg/mL Immunohistochemistry: 5-20 µg/mL Immunocytochemistry: 5-20 µg/mL Optimal working dilutions must be determined by end user.
Comment:	The thermal stability is described by the loss rate. The loss rate was determined by accelerated thermal degradation test, that is, incubate the protein at 37°C for 48h, and no obvious degradation and precipitation were observed. The loss rate is less than 5% within the expiration date under appropriate storage condition.
Restrictions:	For Research Use only

Handling

Format:	Liquid
Buffer:	PBS, pH 7.4, containing 0.02 % Sodium azide, 50 % glycerol.
Preservative:	Sodium azide
Precaution of Use:	This product contains Sodium azide: a POISONOUS AND HAZARDOUS SUBSTANCE which should be handled by trained staff only.
Storage:	4 °C,-20 °C
Storage Comment:	Store at 4°C for frequent use. Stored at -20°C in a manual defrost freezer for two year without detectable loss of activity. Avoid repeated freeze-thaw cycles.
Expiry Date:	24 months



Western Blotting

Image 1. Detection of LAT2 in Rat Spleen lysate using Polyclonal Antibody to Linker For Activation Of T-Cells Family, Member 2 (LAT2)

Western Blotting

Image 2. Detection of Recombinant LAT2, Rat using Polyclonal Antibody to Linker For Activation Of T-Cells Family, Member 2 (LAT2)