

Datasheet for ABIN7439780
anti-LRRC32 antibody (AA 400-643)[Go to Product page](#)

3 Images

Overview

Quantity:	100 µL
Target:	LRRC32
Binding Specificity:	AA 400-643
Reactivity:	Mouse
Host:	Rabbit
Clonality:	Polyclonal
Conjugate:	This LRRC32 antibody is un-conjugated
Application:	Western Blotting (WB), Immunohistochemistry (IHC), Immunoprecipitation (IP), Immunocytochemistry (ICC)

Product Details

Purpose:	Polyclonal Antibody to Leucine Rich Repeat Containing Protein 32 (LRRC32)
Immunogen:	Recombinant Leucine Rich Repeat Containing Protein 32 (LRRC32) corresponding to Gln400~Leu643 (Accession # G3XA59)
Isotype:	IgG
Specificity:	The antibody is a rabbit polyclonal antibody raised against LRRC32. It has been selected for its ability to recognize LRRC32 in immunohistochemical staining and western blotting.
Purification:	Antigen-specific affinity chromatography followed by Protein A affinity chromatography

Target Details

Target:	LRRC32
---------	--------

Target Details

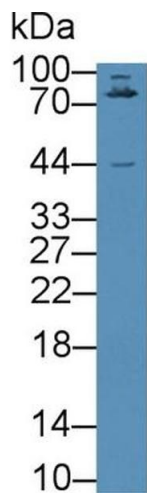
Alternative Name:	Leucine Rich Repeat Containing Protein 32 (LRRC32 Products)
Background:	GARP, Glycoprotein A Repetitions Predominant, Garpin
Pathways:	Activated T Cell Proliferation

Application Details

Application Notes:	Western blotting: 0.5-5 µg/mL Immunohistochemistry: 5-50 µg/mL Immunocytochemistry: 5-50 µg/mL Optimal working dilutions must be determined by end user.
Comment:	The thermal stability is described by the loss rate. The loss rate was determined by accelerated thermal degradation test, that is, incubate the protein at 37°C for 48h, and no obvious degradation and precipitation were observed. The loss rate is less than 5% within the expiration date under appropriate storage condition.
Restrictions:	For Research Use only

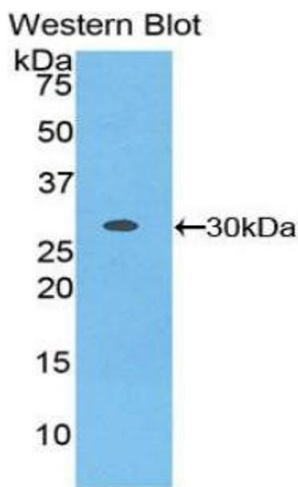
Handling

Format:	Liquid
Buffer:	0.01M PBS, pH 7.4, containing 0.05 % Proclin-300, 50 % glycerol.
Preservative:	ProClin
Precaution of Use:	This product contains ProClin: a POISONOUS AND HAZARDOUS SUBSTANCE which should be handled by trained staff only.
Storage:	4 °C,-20 °C
Storage Comment:	Store at 4°C for frequent use. Stored at -20°C in a manual defrost freezer for two year without detectable loss of activity. Avoid repeated freeze-thaw cycles.
Expiry Date:	24 months



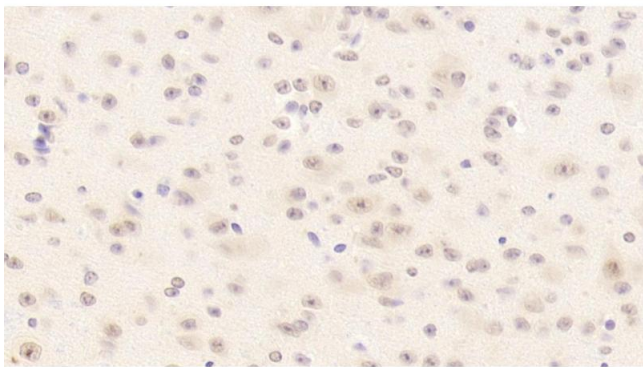
Western Blotting

Image 1. Detection of LRRC32 in Mouse Liver lysate using Polyclonal Antibody to Leucine Rich Repeat Containing Protein 32 (LRRC32)



Western Blotting

Image 2. Detection of Recombinant LRRC32, Mouse using Polyclonal Antibody to Leucine Rich Repeat Containing Protein 32 (LRRC32)



Immunohistochemistry

Image 3. Detection of LRRC32 in Mouse Cerebellum Tissue using Polyclonal Antibody to Leucine Rich Repeat Containing Protein 32 (LRRC32)