

Datasheet for ABIN7439894  
**anti-DVL1 antibody (AA 150-285)**[Go to Product page](#)

## 4 Images

## Overview

|                      |  |
|----------------------|--|
| Quantity:            | 100 µL   |
| Target:              | DVL1   |
| Binding Specificity: | AA 150-285   |
| Reactivity:          | Human  |
| Host:                | Rabbit   |
| Clonality:           | Polyclonal   |
| Conjugate:           | This DVL1 antibody is un-conjugated  |
| Application:         | Western Blotting (WB), Immunohistochemistry (IHC), Immunocytochemistry (ICC), Immunoprecipitation (IP) |

## Product Details

|               |  |
|---------------|--|
| Purpose:      | Polyclonal Antibody to Dishevelled, Dsh Homolog 1 (DVL1)   |
| Immunogen:    | Recombinant Dishevelled, Dsh Homolog 1 (DVL1) corresponding to Arg150~Lys285 (Accession # O14640)  |
| Isotype:      | IgG  |
| Specificity:  | The antibody is a rabbit polyclonal antibody raised against DVL1. It has been selected for its ability to recognize DVL1 in immunohistochemical staining and western blotting. |
| Purification: | Antigen-specific affinity chromatography followed by Protein A affinity chromatography   |

## Target Details

|         |      |
|---------|------|
| Target: | DVL1 |
|---------|------|

## Target Details

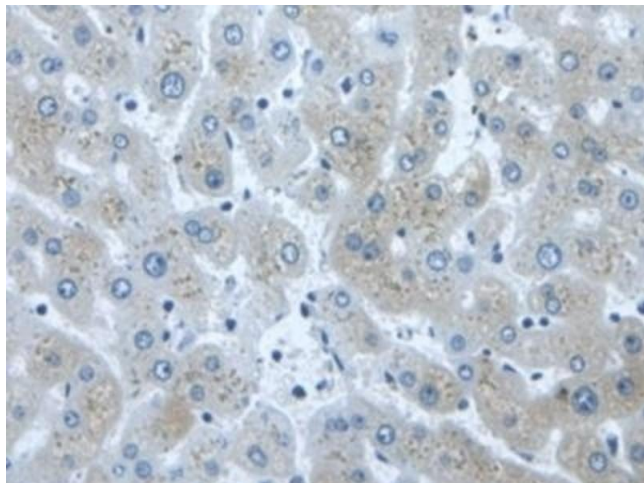
|                   |   |
|-------------------|---|
| Alternative Name: | Dishevelled, Dsh Homolog 1 ( <a href="#">DVL1 Products</a> )  |
| Background:       | DSH homolog 1, Segment polarity protein dishevelled homolog DVL-1   |
| Pathways:         | <a href="#">WNT Signaling</a> , <a href="#">Synaptic Membrane</a> , <a href="#">Skeletal Muscle Fiber Development</a> |

## Application Details

|                    |   |
|--------------------|---|
| Application Notes: | Western blotting: 0.5-2 µg/mL<br>Immunohistochemistry: 5-20 µg/mL<br>Immunocytochemistry: 5-20 µg/mL<br>Optimal working dilutions must be determined by end user.   |
| Comment:           | The thermal stability is described by the loss rate. The loss rate was determined by accelerated thermal degradation test, that is, incubate the protein at 37°C for 48h, and no obvious degradation and precipitation were observed. The loss rate is less than 5% within the expiration date under appropriate storage condition. |
| Restrictions:      | For Research Use only   |

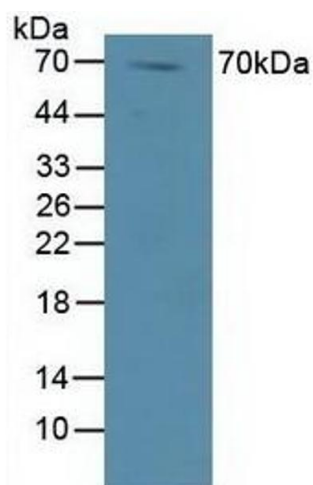
## Handling

|                    |   |
|--------------------|---|
| Format:            | Liquid  |
| Buffer:            | 0.01M PBS, pH 7.4, containing 0.05 % Proclin-300, 50 % glycerol.  |
| Preservative:      | ProClin   |
| Precaution of Use: | This product contains ProClin: a POISONOUS AND HAZARDOUS SUBSTANCE which should be handled by trained staff only.   |
| Storage:           | 4 °C,-20 °C   |
| Storage Comment:   | Store at 4°C for frequent use. Stored at -20°C in a manual defrost freezer for two year without detectable loss of activity. Avoid repeated freeze-thaw cycles. |
| Expiry Date:       | 24 months   |



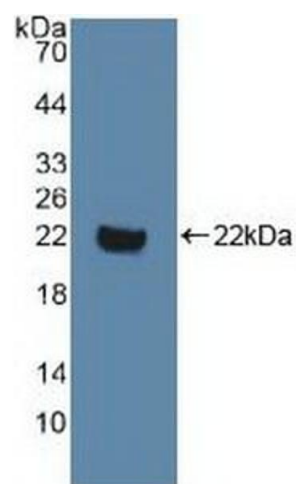
#### Immunohistochemistry

**Image 1.** Detection of DVL1 in Human Liver Tissue using Polyclonal Antibody to Dishevelled, Dsh Homolog 1 (DVL1)



#### Western Blotting

**Image 2.** Detection of DVL1 in Human Lung Tissue using Polyclonal Antibody to Dishevelled, Dsh Homolog 1 (DVL1)



#### Western Blotting

**Image 3.** Detection of Recombinant DVL1, Human using Polyclonal Antibody to Dishevelled, Dsh Homolog 1 (DVL1)

Please check the [product details page](#) for more images. Overall 4 images are available for ABIN7439894.