



[Go to Product page](#)

Datasheet for ABIN7439981

anti-MAP4K5 antibody (AA 613-842)

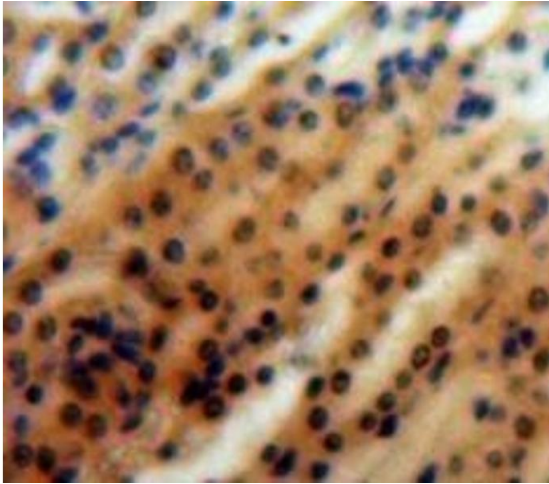
2 Images

Overview

Quantity:	100 µL
Target:	MAP4K5
Binding Specificity:	AA 613-842
Reactivity:	Human
Host:	Rabbit
Clonality:	Polyclonal
Conjugate:	This MAP4K5 antibody is un-conjugated
Application:	Western Blotting (WB), ELISA, Immunohistochemistry (Paraffin-embedded Sections) (IHC (p)), Immunocytochemistry (ICC), Immunohistochemistry (Frozen Sections) (IHC (fro))

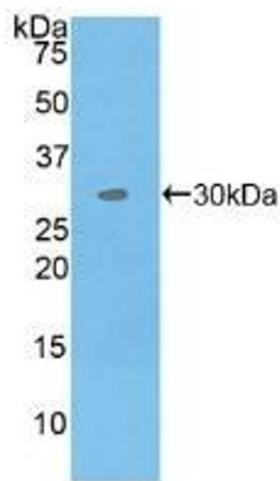
Product Details

Purpose:	Polyclonal Antibody to Mitogen Activated Protein Kinase Kinase Kinase Kinase 5 (MAP4K5)
Immunogen:	Recombinant Mitogen Activated Protein Kinase Kinase Kinase Kinase 5 (MAP4K5) corresponding to Thr613~His842 (Accession # Q9Y4K4)
Isotype:	IgG
Specificity:	The antibody is a rabbit polyclonal antibody raised against MAP4K5. It has been selected for its ability to recognize MAP4K5 in immunohistochemical staining and western blotting.
Cross-Reactivity:	Mouse
Purification:	Antigen-specific affinity chromatography followed by Protein A affinity chromatography



Immunohistochemistry

Image 1. #VALUE!



Western Blotting

Image 2. Detection of Recombinant MAP4K5, Human using Polyclonal Antibody to Mitogen Activated Protein Kinase Kinase Kinase Kinase 5 (MAP4K5)