

Datasheet for ABIN7440023
anti-KLF4 antibody (AA 240-478)



[Go to Product page](#)

3 Images

Overview

Quantity:	100 µL
Target:	KLF4
Binding Specificity:	AA 240-478
Reactivity:	Mouse
Host:	Rabbit
Clonality:	Polyclonal
Conjugate:	This KLF4 antibody is un-conjugated
Application:	Western Blotting (WB), Immunohistochemistry (IHC), Immunocytochemistry (ICC), Immunoprecipitation (IP)

Product Details

Purpose:	Polyclonal Antibody to Kruppel Like Factor 4, Gut (KLF4)
Immunogen:	Recombinant Kruppel Like Factor 4, Gut (KLF4) corresponding to Ser240~His478 with N-terminal His Tag
Isotype:	IgG
Specificity:	The antibody is a rabbit polyclonal antibody raised against KLF4. It has been selected for its ability to recognize KLF4 in immunohistochemical staining and western blotting.
Purification:	Antigen-specific affinity chromatography followed by Protein A affinity chromatography

Target Details

Target:	KLF4
---------	------

Target Details

Alternative Name:	Kruppel Like Factor 4, Gut (KLF4 Products)
Background:	EZF, GKLF, Gut-Enriched Krüppel-Like Factor, Epithelial zinc finger protein EZF
Pathways:	Peptide Hormone Metabolism , Stem Cell Maintenance

Application Details

Application Notes:	Western blotting: 0.5-2 µg/mL Immunohistochemistry: 5-20 µg/mL Immunocytochemistry: 5-20 µg/mL Optimal working dilutions must be determined by end user.
Comment:	The thermal stability is described by the loss rate. The loss rate was determined by accelerated thermal degradation test, that is, incubate the protein at 37°C for 48h, and no obvious degradation and precipitation were observed. The loss rate is less than 5% within the expiration date under appropriate storage condition.
Restrictions:	For Research Use only

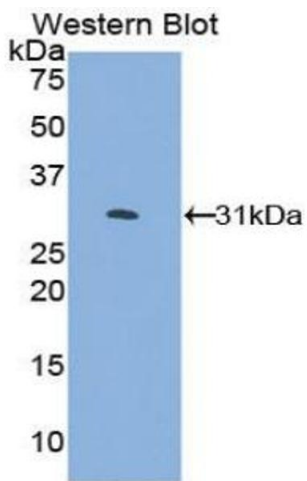
Handling

Format:	Liquid
Buffer:	0.01M PBS, pH 7.4, containing 0.05 % Proclin-300, 50 % glycerol.
Preservative:	ProClin
Precaution of Use:	This product contains ProClin: a POISONOUS AND HAZARDOUS SUBSTANCE which should be handled by trained staff only.
Storage:	4 °C,-20 °C
Storage Comment:	Store at 4°C for frequent use. Stored at -20°C in a manual defrost freezer for two year without detectable loss of activity. Avoid repeated freeze-thaw cycles.
Expiry Date:	24 months



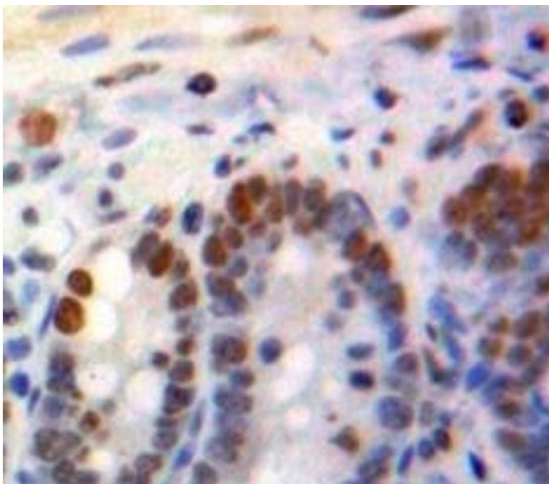
Western Blotting

Image 1. Detection of KLF4 in Mouse Stomach lysate using Polyclonal Antibody to Kruppel Like Factor 4, Gut (KLF4)



Western Blotting

Image 2. Detection of Recombinant KLF4, Mouse using Polyclonal Antibody to Kruppel Like Factor 4, Gut (KLF4)



Immunohistochemistry

Image 3. #VALUE!