

Datasheet for ABIN7440053  
**anti-CEA antibody (AA 448-572)**[Go to Product page](#)

## 6 Images

## Overview

Quantity:	100 µL
Target:	CEA
Binding Specificity:	AA 448-572
Reactivity:	Human
Host:	Rabbit
Clonality:	Polyclonal
Conjugate:	This CEA antibody is un-conjugated
Application:	Western Blotting (WB), Immunohistochemistry (IHC)

## Product Details

Purpose:	Polyclonal Antibody to Carcinoembryonic Antigen (CEA)
Immunogen:	Recombinant CEA (Ser448-Gly572) expressed in E.coli
Isotype:	IgG
Specificity:	The antibody is a rabbit polyclonal antibody raised against CEA. It has been selected for its ability to recognize CEA in immunohistochemical staining and western blotting.
Cross-Reactivity:	Mouse
Purification:	Antigen-specific affinity chromatography followed by Protein A affinity chromatography

## Target Details

Target:	CEA
---------	-----

## Target Details

Alternative Name:	Carcinoembryonic Antigen ( <a href="#">CEA Products</a> )
Background:	CD66E, CD66, CEACAM5, Carcinoembryonic Antigen-related Cell Adhesion Molecule 5, Carcinoembryonic Antigen

## Application Details

Application Notes:	Western blotting: 0.5-5µg/mL Immunohistochemistry: 5-20µg/mL Optimal working dilutions must be determined by end user.
Comment:	The thermal stability is described by the loss rate. The loss rate was determined by accelerated thermal degradation test, that is, incubate the protein at 37°C for 48h, and no obvious degradation and precipitation were observed. The loss rate is less than 5% within the expiration date under appropriate storage condition.
Restrictions:	For Research Use only

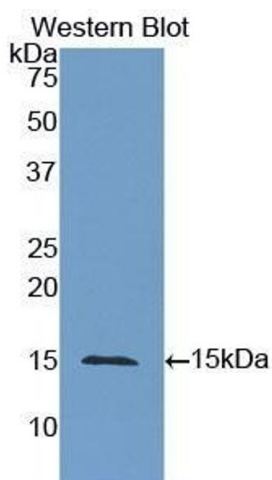
## Handling

Format:	Liquid
Buffer:	Supplied as solution form in 0.01M PBS, pH7.4, containing 0.02% NaN <sub>3</sub> , 50% glycerol
Preservative:	Sodium azide
Precaution of Use:	This product contains Sodium azide: a POISONOUS AND HAZARDOUS SUBSTANCE which should be handled by trained staff only.
Storage:	4 °C,-20 °C
Storage Comment:	Store at 4°C for frequent use. Stored at -20°C in a manual defrost freezer for two year without detectable loss of activity. Avoid repeated freeze-thaw cycles.
Expiry Date:	24 months



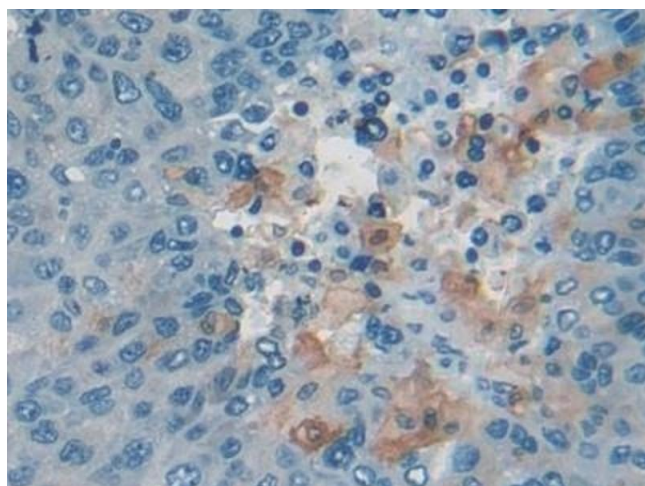
#### Western Blotting

**Image 1.** Detection of CEA in Human HeLa cell lysate using Polyclonal Antibody to Carcinoembryonic Antigen (CEA)



#### Western Blotting

**Image 2.** Detection of Recombinant CEA, Human using Polyclonal Antibody to Carcinoembryonic Antigen (CEA)



#### Immunohistochemistry

**Image 3.** Detection of CEA in Human Liver cancer Tissue using Polyclonal Antibody to Carcinoembryonic Antigen (CEA)

Please check the [product details page](#) for more images. Overall 6 images are available for ABIN7440053.