

## Datasheet for ABIN7440080 anti-LILRB1 antibody (AA 223-410)



[Go to Product page](#)

### 1 Image

#### Overview

Quantity:	100 µL
Target:	LILRB1
Binding Specificity:	AA 223-410
Reactivity:	Human
Host:	Rabbit
Clonality:	Polyclonal
Conjugate:	This LILRB1 antibody is un-conjugated
Application:	Western Blotting (WB), ELISA, Immunocytochemistry (ICC), Immunohistochemistry (Frozen Sections) (IHC (fro)), Immunohistochemistry (Paraffin-embedded Sections) (IHC (p))

#### Product Details

Purpose:	Polyclonal Antibody to Leukocyte Immunoglobulin Like Receptor Subfamily B, Member 1 (LILRB1)
Immunogen:	Recombinant Leukocyte Immunoglobulin Like Receptor Subfamily B, Member 1 (LILRB1) corresponding to Ser223~His410 (Accession # Q8NHL6)
Isotype:	IgG
Specificity:	The antibody is a rabbit polyclonal antibody raised against LILRB1. It has been selected for its ability to recognize LILRB1 in immunohistochemical staining and western blotting.
Purification:	Antigen-specific affinity chromatography followed by Protein A affinity chromatography

## Target Details

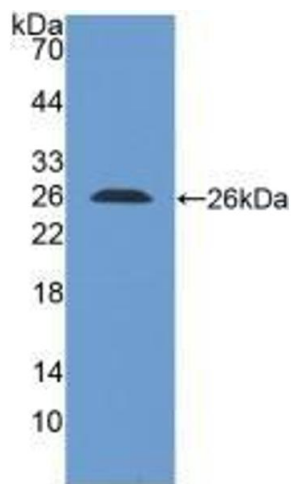
Target:	LILRB1
Alternative Name:	Leukocyte Immunoglobulin Like Receptor Subfamily B, Member 1 ( <a href="#">LILRB1 Products</a> )
Background:	CD85j, LILR-B1, ILT2, LIR1, MIR7, CD85 antigen-like family member J, Immunoglobulin-like transcript 2, Monocyte/macrophage immunoglobulin-like receptor 7
Pathways:	<a href="#">Cellular Response to Molecule of Bacterial Origin</a> , <a href="#">Regulation of Leukocyte Mediated Immunity</a> , <a href="#">Positive Regulation of Immune Effector Process</a> , <a href="#">Production of Molecular Mediator of Immune Response</a>

## Application Details

Application Notes:	Western blotting: 1-5 µg/mL Immunocytochemistry in formalin fixed cells: 5-20 µg/mL Immunohistochemistry in formalin fixed frozen section: 5-20 µg/mL Immunohistochemistry in paraffin section: 5-20 µg/mL Enzyme-linked Immunosorbent Assay: 0.05-2 µg/mL Optimal working dilutions must be determined by end user.
Comment:	The thermal stability is described by the loss rate. The loss rate was determined by accelerated thermal degradation test, that is, incubate the protein at 37°C for 48h, and no obvious degradation and precipitation were observed. The loss rate is less than 5% within the expiration date under appropriate storage condition.
Restrictions:	For Research Use only

## Handling

Format:	Liquid
Buffer:	0.01M PBS, pH 7.4, containing 0.05 % Proclin-300, 50 % glycerol.
Preservative:	ProClin
Precaution of Use:	This product contains ProClin: a POISONOUS AND HAZARDOUS SUBSTANCE which should be handled by trained staff only.
Storage:	4 °C, -20 °C
Storage Comment:	Store at 4°C for frequent use. Stored at -20°C in a manual defrost freezer for two year without detectable loss of activity. Avoid repeated freeze-thaw cycles.
Expiry Date:	24 months



Western Blotting

**Image 1.** Detection of Recombinant LILRB1, Human using Polyclonal Antibody to Leukocyte Immunoglobulin Like Receptor Subfamily B, Member 1 (LILRB1)