

Datasheet for ABIN7440182
anti-MEPE antibody (AA 28-224)[Go to Product page](#)

3 Images

Overview

Quantity:	100 µL
Target:	MEPE
Binding Specificity:	AA 28-224
Reactivity:	Rat
Host:	Rabbit
Clonality:	Polyclonal
Conjugate:	This MEPE antibody is un-conjugated
Application:	Western Blotting (WB), Immunohistochemistry (IHC), Immunoprecipitation (IP), Immunocytochemistry (ICC)

Product Details

Purpose:	Polyclonal Antibody to Matrix Extracellular Phosphoglycoprotein (MEPE)
Immunogen:	Recombinant Matrix Extracellular Phosphoglycoprotein (MEPE) corresponding to Gly28~Ser224 (Accession # D6C6P2)
Isotype:	IgG
Specificity:	The antibody is a rabbit polyclonal antibody raised against MEPE. It has been selected for its ability to recognize MEPE in immunohistochemical staining and western blotting.
Purification:	Antigen-specific affinity chromatography followed by Protein A affinity chromatography

Target Details

Target:	MEPE
---------	------

Target Details

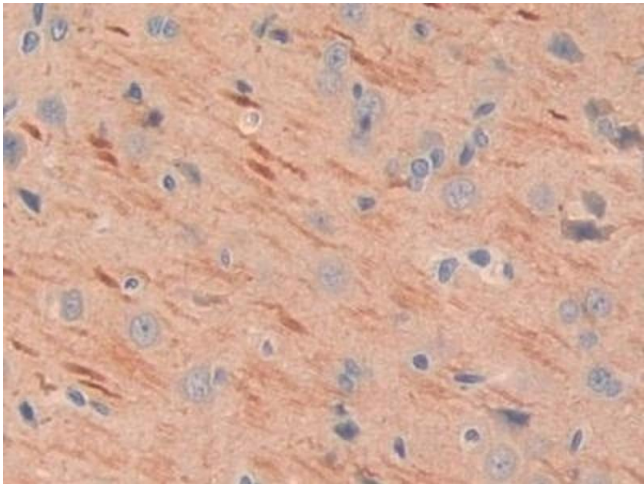
Alternative Name:	Matrix Extracellular Phosphoglycoprotein (MEPE Products)
Background:	OF45, Asarm Motif-Containing, Osteoblast/Osteocyte Factor 45

Application Details

Application Notes:	Western blotting: 0.5-2 µg/mL Immunohistochemistry: 5-20 µg/mL Immunocytochemistry: 5-20 µg/mL Optimal working dilutions must be determined by end user.
Comment:	The thermal stability is described by the loss rate. The loss rate was determined by accelerated thermal degradation test, that is, incubate the protein at 37°C for 48h, and no obvious degradation and precipitation were observed. The loss rate is less than 5% within the expiration date under appropriate storage condition.
Restrictions:	For Research Use only

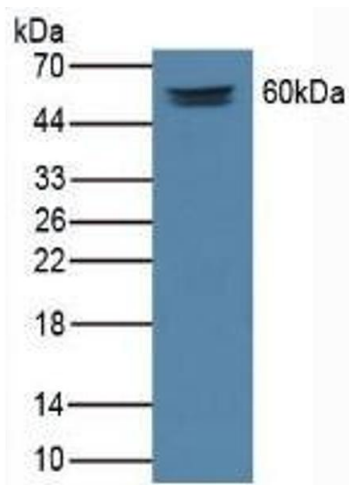
Handling

Format:	Liquid
Buffer:	PBS, pH 7.4, containing 0.02 % Sodium azide, 50 % glycerol.
Preservative:	Sodium azide
Precaution of Use:	This product contains Sodium azide: a POISONOUS AND HAZARDOUS SUBSTANCE which should be handled by trained staff only.
Storage:	4 °C,-20 °C
Storage Comment:	Store at 4°C for frequent use. Stored at -20°C in a manual defrost freezer for two year without detectable loss of activity. Avoid repeated freeze-thaw cycles.
Expiry Date:	24 months



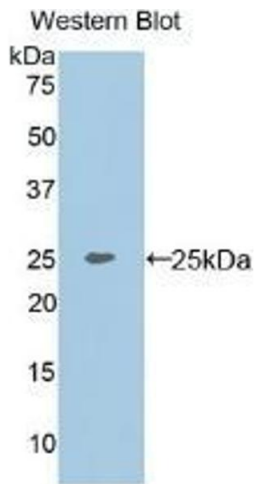
Immunohistochemistry

Image 1. #VALUE!



Western Blotting

Image 2. Detection of MEPE in Rat Serum Tissue using Polyclonal Antibody to Matrix Extracellular Phosphoglycoprotein (MEPE)



Western Blotting

Image 3. Detection of Recombinant MEPE, Rat using Polyclonal Antibody to Matrix Extracellular Phosphoglycoprotein (MEPE)