

Datasheet for ABIN7440191
anti-AMY2A antibody (AA 188-432)[Go to Product page](#)

2 Images

Overview

Quantity:	100 µL
Target:	AMY2A
Binding Specificity:	AA 188-432
Reactivity:	Human
Host:	Rabbit
Clonality:	Polyclonal
Conjugate:	This AMY2A antibody is un-conjugated
Application:	Western Blotting (WB), Immunohistochemistry (IHC), Immunocytochemistry (ICC), Immunoprecipitation (IP)

Product Details

Purpose:	Polyclonal Antibody to Amylase, Alpha 2A (AMY2A)
Immunogen:	Recombinant Amylase, Alpha 2A (AMY2A) corresponding to Asp188~Val432 (Accession # P04746)
Isotype:	IgG
Specificity:	The antibody is a rabbit polyclonal antibody raised against AMY2A. It has been selected for its ability to recognize AMY2A in immunohistochemical staining and western blotting.
Cross-Reactivity:	Mouse, Rat
Purification:	Antigen-specific affinity chromatography followed by Protein A affinity chromatography

Target Details

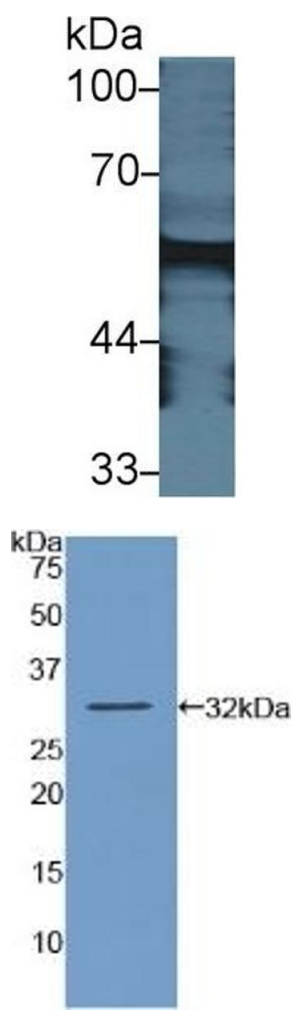
Target:	AMY2A
Alternative Name:	Amylase, Alpha 2A (AMY2A Products)
Background:	AMY2, AMY2B, PA, 1,4-alpha-D-glucan glucanohydrolase

Application Details

Application Notes:	Western blotting: 0.5-2 µg/mL Immunohistochemistry: 5-20 µg/mL Immunocytochemistry: 5-20 µg/mL Optimal working dilutions must be determined by end user.
Comment:	The thermal stability is described by the loss rate. The loss rate was determined by accelerated thermal degradation test, that is, incubate the protein at 37°C for 48h, and no obvious degradation and precipitation were observed. The loss rate is less than 5% within the expiration date under appropriate storage condition.
Restrictions:	For Research Use only

Handling

Format:	Liquid
Buffer:	0.01M PBS, pH 7.4, containing 0.05 % Proclin-300, 50 % glycerol.
Preservative:	ProClin
Precaution of Use:	This product contains ProClin: a POISONOUS AND HAZARDOUS SUBSTANCE which should be handled by trained staff only.
Storage:	4 °C,-20 °C
Storage Comment:	Store at 4°C for frequent use. Stored at -20°C in a manual defrost freezer for two year without detectable loss of activity. Avoid repeated freeze-thaw cycles.
Expiry Date:	24 months



Western Blotting

Image 1. Detection of AMY2A in Mouse Pancreas lysate using Polyclonal Antibody to Amylase, Alpha 2A (AMY2A)

Western Blotting

Image 2. Detection of Recombinant AMY2, Human using Polyclonal Antibody to Amylase, Alpha 2A (AMY2A)