

Datasheet for ABIN7440197
anti-KLRC2 antibody (AA 19-190)

2 Images

[Go to Product page](#)

Overview

Quantity:	100 µL
Target:	KLRC2
Binding Specificity:	AA 19-190
Reactivity:	Human
Host:	Rabbit
Clonality:	Polyclonal
Conjugate:	This KLRC2 antibody is un-conjugated
Application:	Western Blotting (WB), Immunohistochemistry (IHC), Immunoprecipitation (IP), Immunocytochemistry (ICC)

Product Details

Purpose:	Polyclonal Antibody to Killer Cell Lectin Like Receptor Subfamily C, Member 2 (KLRC2)
Immunogen:	Recombinant Killer Cell Lectin Like Receptor Subfamily C, Member 2 (KLRC2) corresponding to Arg19~Leu190 with N-terminal His Tag
Isotype:	IgG
Specificity:	The antibody is a rabbit polyclonal antibody raised against KLRC2. It has been selected for its ability to recognize KLRC2 in immunohistochemical staining and western blotting.
Cross-Reactivity:	Mouse, Pig, Rat
Purification:	Antigen-specific affinity chromatography followed by Protein A affinity chromatography

Target Details

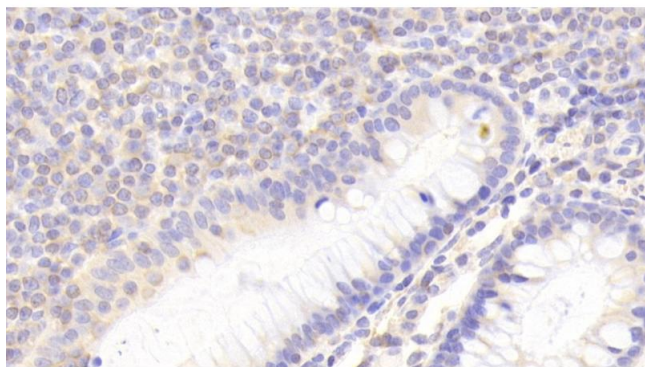
Target:	KLRC2
Alternative Name:	Killer Cell Lectin Like Receptor Subfamily C, Member 2 (KLRC2 Products)
Background:	CD159c, NKG2C, NKG2-C Type II Integral Membrane Protein, CD159 antigen-like family member C, NK cell receptor C, NKG2-C-activating NK receptor

Application Details

Application Notes:	Western blotting: 0.5-2 µg/mL Immunohistochemistry: 5-20 µg/mL Immunocytochemistry: 5-20 µg/mL Optimal working dilutions must be determined by end user.
Comment:	The thermal stability is described by the loss rate. The loss rate was determined by accelerated thermal degradation test, that is, incubate the protein at 37°C for 48h, and no obvious degradation and precipitation were observed. The loss rate is less than 5% within the expiration date under appropriate storage condition.
Restrictions:	For Research Use only

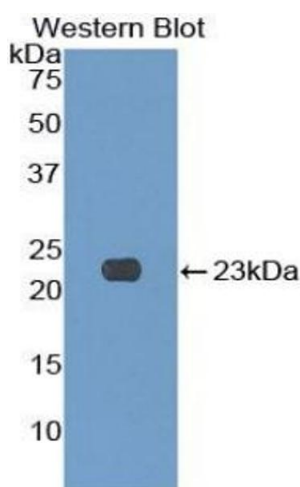
Handling

Format:	Liquid
Buffer:	PBS, pH 7.4, containing 0.02 % Sodium azide, 50 % glycerol.
Preservative:	Sodium azide
Precaution of Use:	This product contains Sodium azide: a POISONOUS AND HAZARDOUS SUBSTANCE which should be handled by trained staff only.
Storage:	4 °C, -20 °C
Storage Comment:	Store at 4°C for frequent use. Stored at -20°C in a manual defrost freezer for two year without detectable loss of activity. Avoid repeated freeze-thaw cycles.
Expiry Date:	24 months



Immunohistochemistry

Image 1. Detection of KLRC2 in Human Colon Tissue using Polyclonal Antibody to Killer Cell Lectin Like Receptor Subfamily C, Member 2 (KLRC2)



Western Blotting

Image 2. Detection of Recombinant KLRC2, Human using Polyclonal Antibody to Killer Cell Lectin Like Receptor Subfamily C, Member 2 (KLRC2)