



Datasheet for ABIN7440425  
**anti-ATP1B3 antibody (AA 66-273)**



[Go to Product page](#)

3 Images

Overview

Quantity:	100 µL
Target:	ATP1B3
Binding Specificity:	AA 66-273
Reactivity:	Rat
Host:	Rabbit
Clonality:	Polyclonal
Application:	Western Blotting (WB), Immunohistochemistry (IHC), Immunoprecipitation (IP), Immunocytochemistry (ICC)

Product Details

Purpose:	Polyclonal Antibody to Sodium/potassium Transporting ATPase Subunit Beta-3 (ATP1b3)
Immunogen:	Recombinant Sodium/potassium Transporting ATPase Subunit Beta-3 (ATP1b3) corresponding to Asn66~Phe273 (Accession # Q63377)
Isotype:	IgG
Specificity:	The antibody is a rabbit polyclonal antibody raised against ATP1b3. It has been selected for its ability to recognize ATP1b3 in immunohistochemical staining and western blotting.
Purification:	Antigen-specific affinity chromatography followed by Protein A affinity chromatography

Target Details

Target:	ATP1B3
Alternative Name:	Sodium/potassium Transporting ATPase Subunit Beta-3 ( <a href="#">ATP1B3 Products</a> )

## Target Details

---

Background: CD298, ATP1-B3, ATPB-3, ATPase, Na<sup>+</sup>/K<sup>+</sup> Transporting Beta 3 Polypeptide

---

Pathways: [Thyroid Hormone Synthesis](#)

---

## Application Details

---

Application Notes: Western blotting: 0.5-2 µg/mL  
1:180-720 Immunohistochemistry: 5-20 µg/mL  
1:18-72 Immunocytochemistry: 5-20 µg/mL  
1:18-72 Optimal working dilutions must be determined by end user.

---

Comment: The thermal stability is described by the loss rate. The loss rate was determined by accelerated thermal degradation test, that is, incubate the protein at 37°C for 48h, and no obvious degradation and precipitation were observed. The loss rate is less than 5% within the expiration date under appropriate storage condition.

---

Restrictions: For Research Use only

---

## Handling

---

Format: Liquid

---

Buffer: 0.01M PBS, pH 7.4, containing 0.05 % Proclin-300, 50 % glycerol.

---

Preservative: ProClin

---

Precaution of Use: This product contains ProClin: a POISONOUS AND HAZARDOUS SUBSTANCE which should be handled by trained staff only.

---

Storage: 4 °C, -20 °C

---

Storage Comment: Store at 4°C for frequent use. Stored at -20°C in a manual defrost freezer for two year without detectable loss of activity. Avoid repeated freeze-thaw cycles.

---

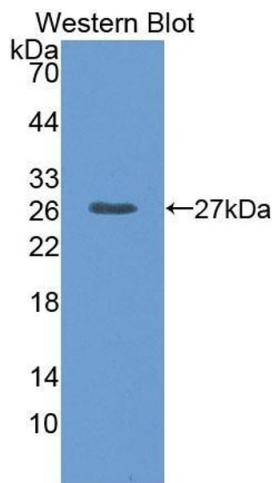
Expiry Date: 24 months

---



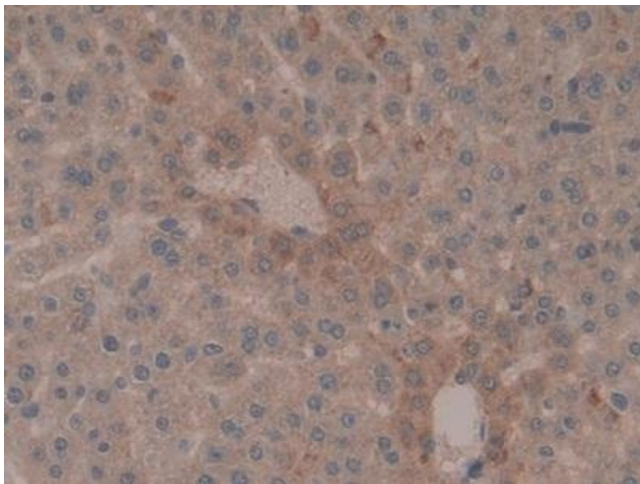
### Western Blotting

**Image 1.** Detection of ATP1b3 in Rat Serum using Polyclonal Antibody to Sodium/potassium Transporting ATPase Subunit Beta-3 (ATP1b3)



### Western Blotting

**Image 2.** Detection of Recombinant ATP1b3, Rat using Polyclonal Antibody to Sodium/potassium Transporting ATPase Subunit Beta-3 (ATP1b3)



### Immunohistochemistry

**Image 3.** #VALUE!