

Datasheet for ABIN7440458
anti-Prolactin antibody (AA 1-226)[Go to Product page](#)

3 Images

Overview

| | |
|----------------------|--|
| Quantity: | 100 µL |
| Target: | Prolactin (PRL) |
| Binding Specificity: | AA 1-226 |
| Reactivity: | Mouse |
| Host: | Rabbit |
| Clonality: | Polyclonal |
| Conjugate: | This Prolactin antibody is un-conjugated |
| Application: | Western Blotting (WB), Immunohistochemistry (IHC), Immunoprecipitation (IP), Immunocytochemistry (ICC) |

Product Details

| | |
|---------------|--|
| Purpose: | Polyclonal Antibody to Prolactin (PRL) |
| Immunogen: | Recombinant Prolactin (PRL) corresponding to Met1~Cys226 |
| Isotype: | IgG |
| Specificity: | The antibody is a rabbit polyclonal antibody raised against PRL. It has been selected for its ability to recognize PRL in immunohistochemical staining and western blotting. |
| Purification: | Antigen-specific affinity chromatography followed by Protein A affinity chromatography |

Target Details

| | |
|---------|-----------------|
| Target: | Prolactin (PRL) |
|---------|-----------------|

Target Details

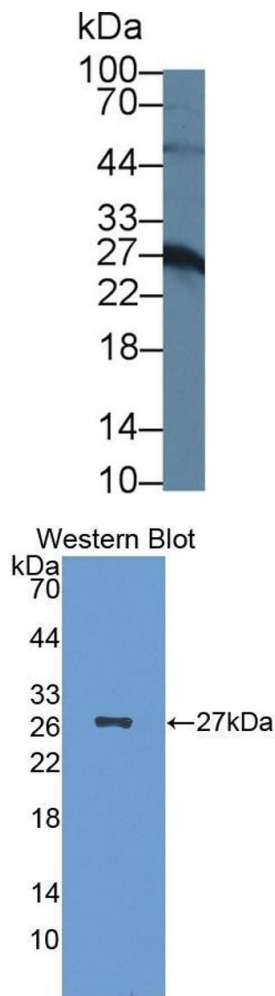
| | |
|-------------------|--|
| Alternative Name: | Prolactin (PRL Products) |
| Background: | LTH, Luteotropic Hormone |
| Pathways: | JAK-STAT Signaling , Peptide Hormone Metabolism , Response to Growth Hormone Stimulus , Protein targeting to Nucleus |

Application Details

| | |
|--------------------|---|
| Application Notes: | Western blotting: 1:50-400 Immunocytochemistry in formalin fixed cells: 1:50-500 Immunohistochemistry in formalin fixed frozen section: 1:50-500 Immunohistochemistry in paraffin section: 1:10-100 Enzyme-linked Immunosorbent Assay: 1:100-5000 Optimal working dilutions must be determined by end user. |
| Comment: | The thermal stability is described by the loss rate. The loss rate was determined by accelerated thermal degradation test, that is, incubate the protein at 37°C for 48h, and no obvious degradation and precipitation were observed. The loss rate is less than 5% within the expiration date under appropriate storage condition. |
| Restrictions: | For Research Use only |

Handling

| | |
|--------------------|---|
| Format: | Liquid |
| Buffer: | PBS, pH 7.4, containing 0.02 % Sodium azide, 50 % glycerol. |
| Preservative: | Sodium azide |
| Precaution of Use: | This product contains Sodium azide: a POISONOUS AND HAZARDOUS SUBSTANCE which should be handled by trained staff only. |
| Storage: | 4 °C, -20 °C |
| Storage Comment: | Store at 4°C for frequent use. Stored at -20°C in a manual defrost freezer for two year without detectable loss of activity. Avoid repeated freeze-thaw cycles. |
| Expiry Date: | 24 months |



Western Blotting

Image 1. Detection of PRL in Mouse Cerebrum lysate using Polyclonal Antibody to Prolactin (PRL)

Western Blotting

Image 2. Detection of recombinant PRL using Polyclonal Antibody to Prolactin (PRL)

Immunohistochemistry

Image 3. Detection of PRL in Porcine Pituitary Tissue using Polyclonal Antibody to Prolactin (PRL)

