

Datasheet for ABIN7440488
anti-GP1BB antibody (AA 53-176)[Go to Product page](#)

2 Images

Overview

| | |
|----------------------|---|
| Quantity: | 100 µL |
| Target: | GP1BB |
| Binding Specificity: | AA 53-176 |
| Reactivity: | Mouse |
| Host: | Rabbit |
| Clonality: | Polyclonal |
| Conjugate: | This GP1BB antibody is un-conjugated |
| Application: | Western Blotting (WB), Immunohistochemistry (IHC), Immunoprecipitation (IP), Immunocytochemistry (ICC) |

Product Details

| | |
|---------------|---|
| Purpose: | Polyclonal Antibody to Platelet Glycoprotein Ib Beta Chain (GP1BB) |
| Immunogen: | Recombinant Platelet Glycoprotein Ib Beta Chain (GP1BB) corresponding to Phe53~Arg176 (Accession # P56400) |
| Isotype: | IgG |
| Specificity: | The antibody is a rabbit polyclonal antibody raised against GP1BB. It has been selected for its ability to recognize GP1BB in immunohistochemical staining and western blotting. |
| Purification: | Antigen-specific affinity chromatography followed by Protein A affinity chromatography |

Target Details

| | |
|---------|-------|
| Target: | GP1BB |
|---------|-------|

Target Details

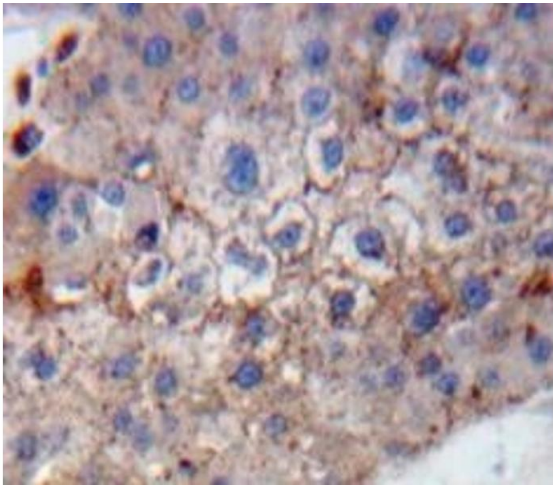
| | |
|-------------------|---|
| Alternative Name: | Platelet Glycoprotein Ib Beta Chain (GP1BB Products) |
| Background: | CD42c,CD42-c, GP1-BB, GPIB-B, GP1Bb, Glycoprotein Ib Beta Polypeptide, Platelet |

Application Details

| | |
|--------------------|---|
| Application Notes: | Western blotting: 0.5-2 µg/mL 1:500-2000 Immunohistochemistry: 5-20 µg/mL 1:50-200 Immunocytochemistry: 5-20 µg/mL 1:50-200 Optimal working dilutions must be determined by end user. |
| Comment: | The thermal stability is described by the loss rate. The loss rate was determined by accelerated thermal degradation test, that is, incubate the protein at 37°C for 48h, and no obvious degradation and precipitation were observed. The loss rate is less than 5% within the expiration date under appropriate storage condition. |
| Restrictions: | For Research Use only |

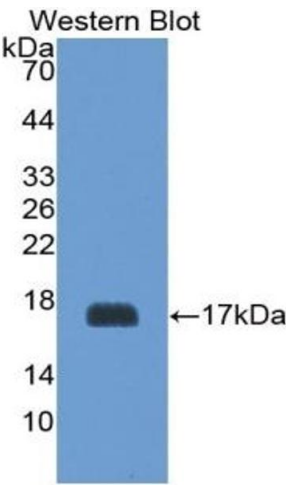
Handling

| | |
|--------------------|---|
| Format: | Liquid |
| Buffer: | 0.01M PBS, pH 7.4, containing 0.05 % Proclin-300, 50 % glycerol. |
| Preservative: | ProClin |
| Precaution of Use: | This product contains ProClin: a POISONOUS AND HAZARDOUS SUBSTANCE which should be handled by trained staff only. |
| Storage: | 4 °C,-20 °C |
| Storage Comment: | Store at 4°C for frequent use. Stored at -20°C in a manual defrost freezer for two year without detectable loss of activity. Avoid repeated freeze-thaw cycles. |
| Expiry Date: | 24 months |



Immunohistochemistry

Image 1. #VALUE!



Western Blotting

Image 2. Detection of Recombinant GP1Bb, Mouse using Polyclonal Antibody to Platelet Glycoprotein Ib Beta Chain (GP1BB)