

Datasheet for ABIN7440614
anti-PTPRJ antibody (AA 1061-1293)[Go to Product page](#)

4 Images

Overview

Quantity:	100 µL
Target:	PTPRJ
Binding Specificity:	AA 1061-1293
Reactivity:	Human
Host:	Rabbit
Clonality:	Polyclonal
Application:	Western Blotting (WB), ELISA, Immunocytochemistry (ICC), Immunohistochemistry (Paraffin-embedded Sections) (IHC (p)), Immunohistochemistry (Frozen Sections) (IHC (fro))

Product Details

Purpose:	Polyclonal Antibody to Density Enhanced Phosphatase 1 (DEP1)
Immunogen:	Recombinant Density Enhanced Phosphatase 1 (DEP1) corresponding to Glu1061~Gln1293 (Accession # Q12913)
Isotype:	IgG
Specificity:	The antibody is a rabbit polyclonal antibody raised against DEP1. It has been selected for its ability to recognize DEP1 in immunohistochemical staining and western blotting.
Cross-Reactivity:	Mouse
Purification:	Antigen-specific affinity chromatography followed by Protein A affinity chromatography

Target Details

Target:	PTPRJ
---------	-------

Target Details

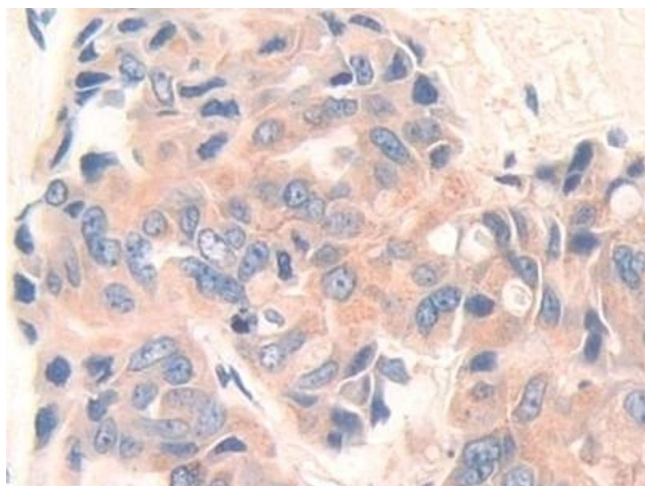
Alternative Name:	Density Enhanced Phosphatase 1 (PTPRJ Products)
Background:	CD148, PTPR-J, PTPRJ, HPTPeta, R-PTP-ETA, SCC1, Protein-tyrosine phosphatase eta, Density-enhanced phosphatase 1
Pathways:	EGFR Signaling Pathway , Platelet-derived growth Factor Receptor Signaling

Application Details

Application Notes:	Western blotting: 1-5 µg/mL Immunocytochemistry in formalin fixed cells: 5-20 µg/mL Immunohistochemistry in formalin fixed frozen section: 5-20 µg/mL Immunohistochemistry in paraffin section: 5-20 µg/mL Enzyme-linked Immunosorbent Assay: 0.05-2 µg/mL Optimal working dilutions must be determined by end user.
Comment:	The thermal stability is described by the loss rate. The loss rate was determined by accelerated thermal degradation test, that is, incubate the protein at 37°C for 48h, and no obvious degradation and precipitation were observed. The loss rate is less than 5% within the expiration date under appropriate storage condition.
Restrictions:	For Research Use only

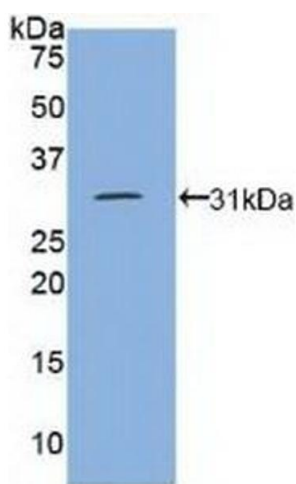
Handling

Format:	Liquid
Buffer:	0.01M PBS, pH 7.4, containing 0.05 % Proclin-300, 50 % glycerol.
Preservative:	ProClin
Precaution of Use:	This product contains ProClin: a POISONOUS AND HAZARDOUS SUBSTANCE which should be handled by trained staff only.
Storage:	4 °C, -20 °C
Storage Comment:	Store at 4°C for frequent use. Stored at -20°C in a manual defrost freezer for two year without detectable loss of activity. Avoid repeated freeze-thaw cycles.
Expiry Date:	24 months



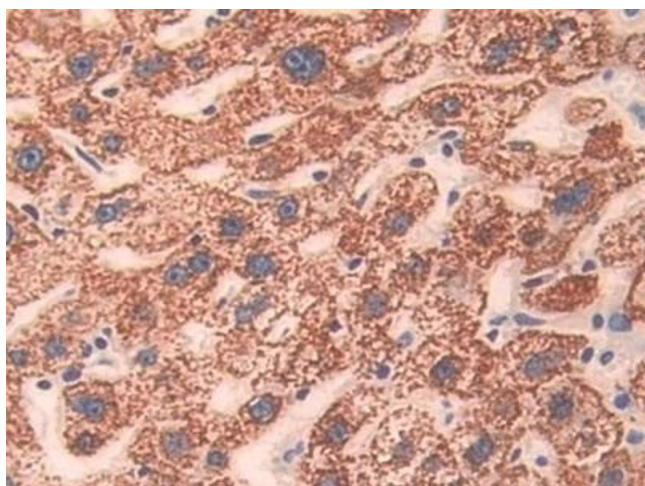
Immunohistochemistry

Image 1. Detection of DEP1 in Human Breast cancer Tissue using Polyclonal Antibody to Density Enhanced Phosphatase 1 (DEP1)



Western Blotting

Image 2. Detection of Recombinant DEP1, Human using Polyclonal Antibody to Density Enhanced Phosphatase 1 (DEP1)



Immunohistochemistry

Image 3. Detection of DEP1 in Human Liver Tissue using Polyclonal Antibody to Density Enhanced Phosphatase 1 (DEP1)

Please check the [product details page](#) for more images. Overall 4 images are available for ABIN7440614.