

Datasheet for ABIN7440638
anti-ETFB antibody (AA 2-255)[Go to Product page](#)

7 Images

Overview

Quantity:	100 µL
Target:	ETFB
Binding Specificity:	AA 2-255
Reactivity:	Human
Host:	Rabbit
Clonality:	Polyclonal
Conjugate:	This ETFB antibody is un-conjugated
Application:	Western Blotting (WB), Immunohistochemistry (IHC), Immunoprecipitation (IP), Immunocytochemistry (ICC)

Product Details

Purpose:	Polyclonal Antibody to Electron Transfer Flavoprotein Beta Polypeptide (ETFb)
Immunogen:	Recombinant Electron Transfer Flavoprotein Beta Polypeptide (ETFb) corresponding to Ala2~Ile255
Isotype:	IgG
Specificity:	The antibody is a rabbit polyclonal antibody raised against ETFb. It has been selected for its ability to recognize ETFb in immunohistochemical staining and western blotting.
Cross-Reactivity:	Mouse, Pig, Rat
Purification:	Antigen-specific affinity chromatography followed by Protein A affinity chromatography

Target Details

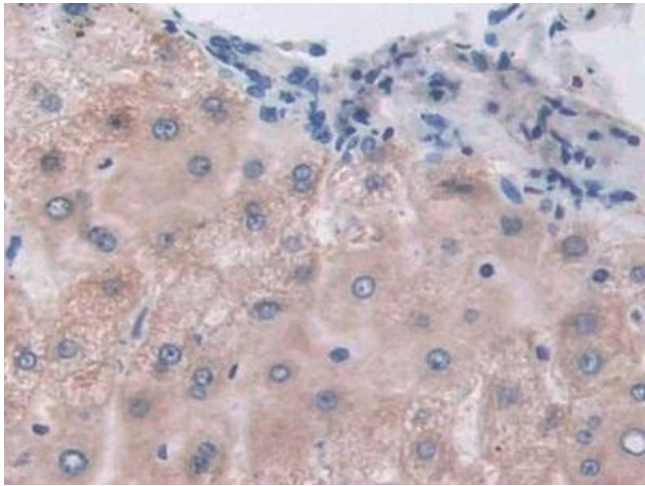
Target:	ETFB
Alternative Name:	Electron Transfer Flavoprotein Beta Polypeptide (ETFB Products)
Background:	ETF-B, MADD, FP585

Application Details

Application Notes:	Western blotting: 0.5-2 µg/mL Immunohistochemistry: 5-20 µg/mL Immunocytochemistry: 5-20 µg/mL Optimal working dilutions must be determined by end user.
Comment:	The thermal stability is described by the loss rate. The loss rate was determined by accelerated thermal degradation test, that is, incubate the protein at 37°C for 48h, and no obvious degradation and precipitation were observed. The loss rate is less than 5% within the expiration date under appropriate storage condition.
Restrictions:	For Research Use only

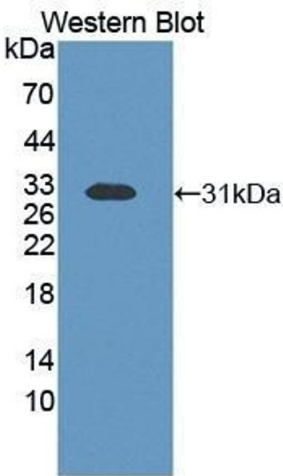
Handling

Format:	Liquid
Buffer:	0.01M PBS, pH 7.4, containing 0.05 % Proclin-300, 50 % glycerol.
Preservative:	ProClin
Precaution of Use:	This product contains ProClin: a POISONOUS AND HAZARDOUS SUBSTANCE which should be handled by trained staff only.
Storage:	4 °C,-20 °C
Storage Comment:	Store at 4°C for frequent use. Stored at -20°C in a manual defrost freezer for two year without detectable loss of activity. Avoid repeated freeze-thaw cycles.
Expiry Date:	24 months



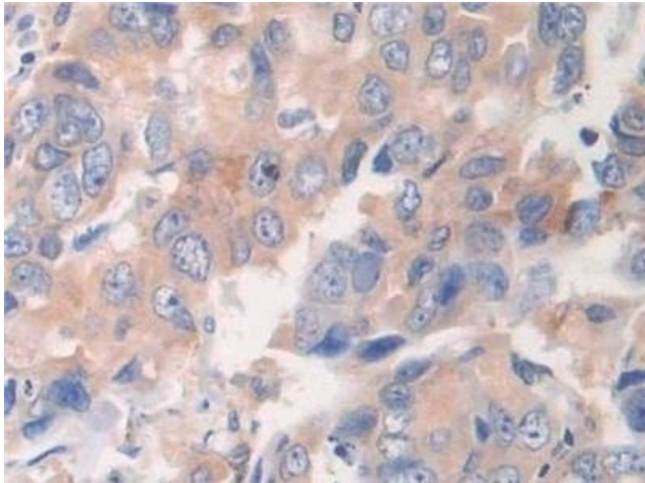
Immunohistochemistry

Image 1. Detection of ETFb in Human Liver Tissue using Polyclonal Antibody to Electron Transfer Flavoprotein Beta Polypeptide (ETFb)



Western Blotting

Image 2. Detection of Recombinant ETFb, Human using Polyclonal Antibody to Electron Transfer Flavoprotein Beta Polypeptide (ETFb)



Immunohistochemistry

Image 3. Detection of ETFb in Human Breast cancer Tissue using Polyclonal Antibody to Electron Transfer Flavoprotein Beta Polypeptide (ETFb)

Please check the [product details page](#) for more images. Overall 7 images are available for ABIN7440638.