

Datasheet for ABIN7440662
anti-CD235a/GYPA antibody (AA 20-91)[Go to Product page](#)

7 Images

Overview

Quantity:	100 µL
Target:	CD235a/GYPA (GYPA)
Binding Specificity:	AA 20-91
Reactivity:	Human
Host:	Rabbit
Clonality:	Polyclonal
Conjugate:	This CD235a/GYPA antibody is un-conjugated
Application:	Immunohistochemistry (IHC), Western Blotting (WB), Immunoprecipitation (IP), Immunocytochemistry (ICC)

Product Details

Purpose:	Polyclonal Antibody to Glycophorin A (GYPA)
Immunogen:	Recombinant Glycophorin A (GYPA) corresponding to Leu20~Glu91 with N-terminal His Tag
Isotype:	IgG
Specificity:	The antibody is a rabbit polyclonal antibody raised against GYPA. It has been selected for its ability to recognize GYPA in immunohistochemical staining and western blotting.
Purification:	Antigen-specific affinity chromatography followed by Protein A affinity chromatography

Target Details

Target:	CD235a/GYPA (GYPA)
---------	--------------------

Target Details

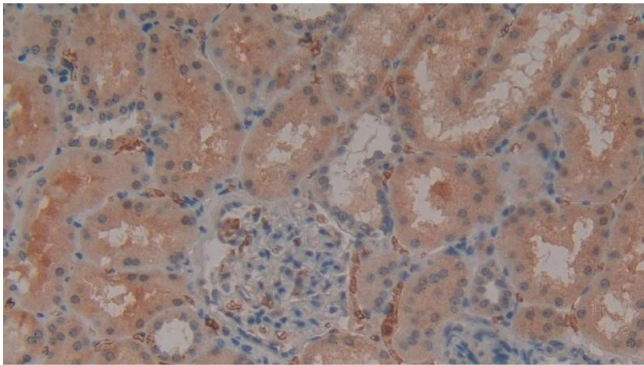
Alternative Name:	Glycophorin A (GYPA Products)
Background:	CD235a, MN, MNS, GPA, GP _E rik, GPSAT, PAS-2, Gp ^{MI} III, HGp ^{MI} III, HGp ^{MI} IV, HGp ^{MI} X, HGp ^{MI} XI, HGp St a, Sialoglycoprotein alpha, MN sialoglycoprotein
Pathways:	Maintenance of Protein Location

Application Details

Application Notes:	Western blotting: 0.5-2 µg/mL Immunohistochemistry: 5-20 µg/mL Immunocytochemistry: 5-20 µg/mL Optimal working dilutions must be determined by end user.
Comment:	The thermal stability is described by the loss rate. The loss rate was determined by accelerated thermal degradation test, that is, incubate the protein at 37°C for 48h, and no obvious degradation and precipitation were observed. The loss rate is less than 5% within the expiration date under appropriate storage condition.
Restrictions:	For Research Use only

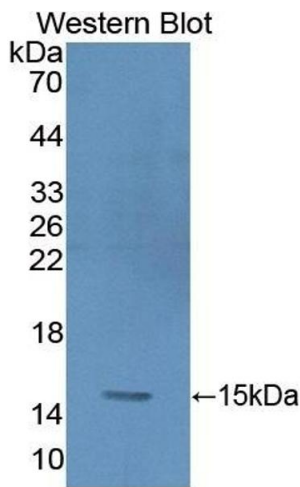
Handling

Format:	Liquid
Buffer:	PBS, pH 7.4, containing 0.02 % Sodium azide, 50 % glycerol.
Preservative:	Sodium azide
Precaution of Use:	This product contains Sodium azide: a POISONOUS AND HAZARDOUS SUBSTANCE which should be handled by trained staff only.
Storage:	4 °C, -20 °C
Storage Comment:	Store at 4°C for frequent use. Stored at -20°C in a manual defrost freezer for two year without detectable loss of activity. Avoid repeated freeze-thaw cycles.
Expiry Date:	24 months



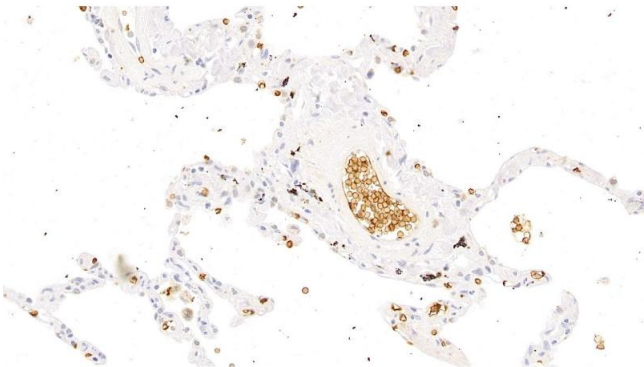
Immunohistochemistry

Image 1. Detection of GYPA in Human Kidney Tissue using Polyclonal Antibody to Glycophorin A (GYPA)



Western Blotting

Image 2. Detection of Recombinant GYPA, Human using Polyclonal Antibody to Glycophorin A (GYPA)



Immunohistochemistry

Image 3. Detection of GYPA in Human Lung Tissue using Polyclonal Antibody to Glycophorin A (GYPA)

Please check the [product details page](#) for more images. Overall 7 images are available for ABIN7440662.