

Datasheet for ABIN744068  
**anti-PPP1R12A antibody (pThr696)**

## 3 Images

[Go to Product page](#)

## Overview

Quantity:	100 µL
Target:	PPP1R12A
Binding Specificity:	pThr696
Reactivity:	Human, Rat
Host:	Rabbit
Clonality:	Polyclonal
Conjugate:	This PPP1R12A antibody is un-conjugated
Application:	Western Blotting (WB), Flow Cytometry (FACS)

## Product Details

Immunogen:	KLH conjugated synthetic phosphopeptide derived from human around the phosphorylation site of Ser696
Isotype:	IgG
Specificity:	This phosphorylation site is homologous to that of Thr694 in Mouse and Thr697 in Rat. The region containing this phosphorylation site is known to be homologous to that of the related protein, PP12C, and will react with this protein when phosphorylated at Thr560 in Human and Mouse, and Thr561 in Rat.
Cross-Reactivity:	Human, Rat
Predicted Reactivity:	Mouse,Dog,Cow,Horse,Chicken,Rabbit
Purification:	Purified by Protein A.

## Target Details

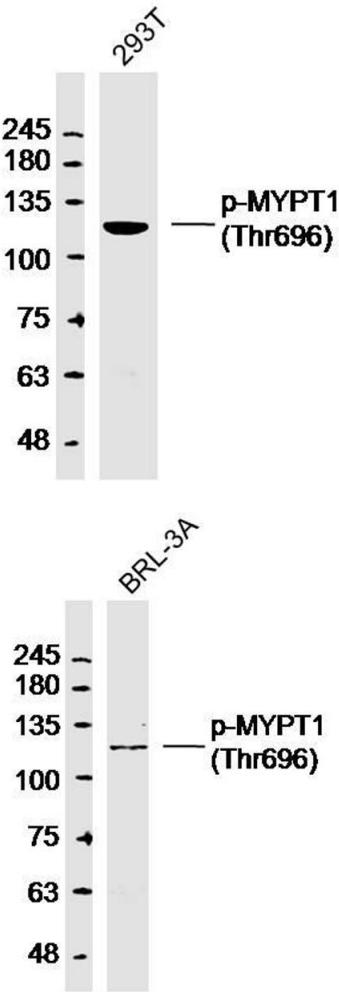
Target:	PPP1R12A
Alternative Name:	MYPT1 ( <a href="#">PPP1R12A Products</a> )
Background:	<p>Synonyms: MBS, M130, MYPT1, Protein phosphatase 1 regulatory subunit 12A, Myosin phosphatase-targeting subunit 1, Myosin phosphatase target subunit 1, Protein phosphatase myosin-binding subunit, PPP1R12A</p> <p>Background: Key regulator of protein phosphatase 1C (PPP1C). Mediates binding to myosin. As part of the PPP1C complex, involved in dephosphorylation of PLK1. Capable of inhibiting HIF1AN-dependent suppression of HIF1A activity.</p>
Gene ID:	4659
UniProt:	<a href="#">O14974</a>
Pathways:	<a href="#">M Phase</a>

## Application Details

Application Notes:	WB 1:300-5000 FCM 1:20-100
Restrictions:	For Research Use only

## Handling

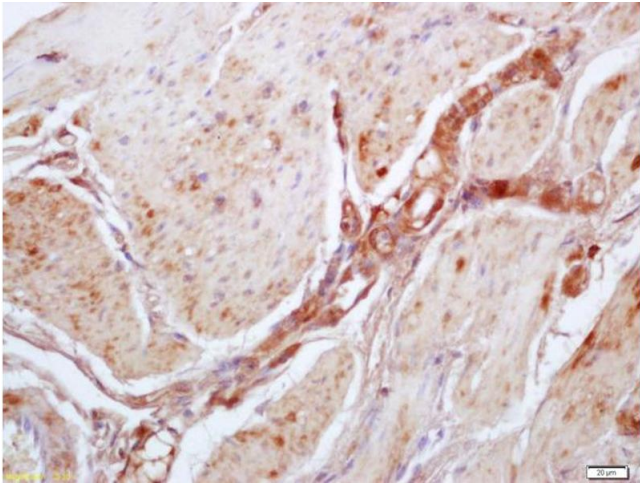
Format:	Liquid
Concentration:	1 µg/µL
Buffer:	0.01M TBS( pH 7.4) with 1 % BSA, 0.02 % Proclin300 and 50 % Glycerol.
Preservative:	ProClin
Precaution of Use:	This product contains ProClin: a POISONOUS AND HAZARDOUS SUBSTANCE, which should be handled by trained staff only.
Storage:	4 °C,-20 °C
Storage Comment:	Shipped at 4°C. Store at -20°C for one year. Avoid repeated freeze/thaw cycles.
Expiry Date:	12 months



**Image 1.** 293T lysates probed with MYPT1 (Thr696) Polyclonal Antibody, Unconjugated at 1:300 dilution and 4°C overnight incubation. Followed by conjugated secondary antibody incubation at 1:10000 for 60 min at 37°C.

#### Western Blotting

**Image 2.** Rat BRL-3A lysates probed with p-MYPT1(Thr696) Polyclonal Antibody, Unconjugated at 1:300 dilution and 4°C overnight incubation. Followed by conjugated secondary antibody incubation at 1:10000 for 60 min at 37°C.



#### Immunohistochemistry

**Image 3.** Formalin-fixed and paraffin embedded mouse stomach labeled with Anti-Phospho-MYPT1(Thr696) Polyclonal Antibody, Unconjugated (ABIN744068) at 1:200 followed by conjugation to the secondary antibody and DAB staining