

Datasheet for ABIN7440713
anti-Epiregulin antibody (AA 1-162)

3 Images

[Go to Product page](#)

Overview

Quantity:	100 µL
Target:	Epiregulin (EREG)
Binding Specificity:	AA 1-162
Reactivity:	Rat
Host:	Rabbit
Clonality:	Polyclonal
Conjugate:	This Epiregulin antibody is un-conjugated
Application:	Western Blotting (WB), Immunohistochemistry (IHC), Immunoprecipitation (IP), Immunocytochemistry (ICC)

Product Details

Purpose:	Polyclonal Antibody to Epiregulin (EREG)
Immunogen:	Recombinant Epiregulin (EREG) corresponding to Met1~Val162 with N-terminal His Tag
Isotype:	IgG
Specificity:	The antibody is a rabbit polyclonal antibody raised against EREG. It has been selected for its ability to recognize EREG in immunohistochemical staining and western blotting.
Purification:	Antigen-specific affinity chromatography followed by Protein A affinity chromatography

Target Details

Target:	Epiregulin (EREG)
---------	-------------------

Target Details

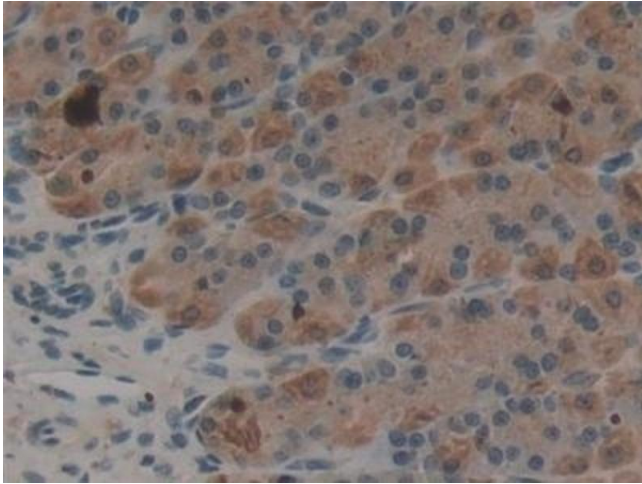
Alternative Name:	Epiregulin (EREG Products)
Background:	EPR, ER, Proepiregulin
Pathways:	RTK Signaling , Fc-epsilon Receptor Signaling Pathway , EGFR Signaling Pathway , Neurotrophin Signaling Pathway , Regulation of Muscle Cell Differentiation

Application Details

Application Notes:	Western blotting: 0.5-2 µg/mL Immunohistochemistry: 5-20 µg/mL Immunocytochemistry: 5-20 µg/mL Optimal working dilutions must be determined by end user.
Comment:	The thermal stability is described by the loss rate. The loss rate was determined by accelerated thermal degradation test, that is, incubate the protein at 37°C for 48h, and no obvious degradation and precipitation were observed. The loss rate is less than 5% within the expiration date under appropriate storage condition.
Restrictions:	For Research Use only

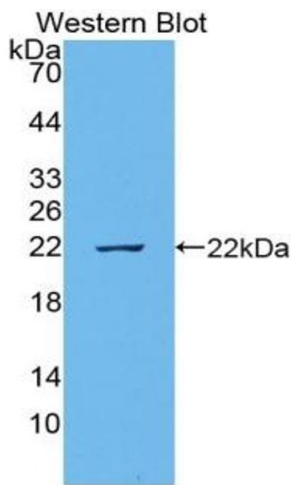
Handling

Format:	Liquid
Buffer:	0.01M PBS, pH 7.4, containing 0.05 % Proclin-300, 50 % glycerol.
Preservative:	ProClin
Precaution of Use:	This product contains ProClin: a POISONOUS AND HAZARDOUS SUBSTANCE which should be handled by trained staff only.
Storage:	4 °C, -20 °C
Storage Comment:	Store at 4°C for frequent use. Stored at -20°C in a manual defrost freezer for two year without detectable loss of activity. Avoid repeated freeze-thaw cycles.
Expiry Date:	24 months



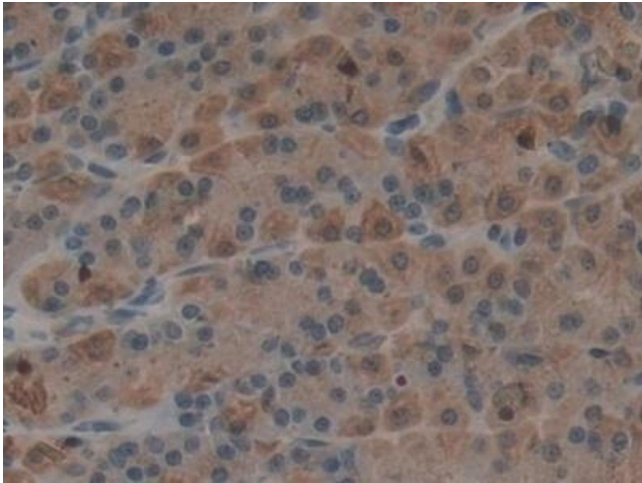
Immunohistochemistry

Image 1. Detection of EREG in Rat Stomach Tissue using Polyclonal Antibody to Epiregulin (EREG)



Western Blotting

Image 2. Detection of Recombinant EREG Rat using Polyclonal Antibody to Epiregulin (EREG)



Immunohistochemistry

Image 3. #VALUE!