

Datasheet for ABIN7440725
anti-PEDF antibody (AA 20-418)

3 Images

[Go to Product page](#)

Overview

Quantity:	100 µL
Target:	PEDF (SERPINF1)
Binding Specificity:	AA 20-418
Reactivity:	Rat
Host:	Rabbit
Clonality:	Polyclonal
Conjugate:	This PEDF antibody is un-conjugated
Application:	Western Blotting (WB), Immunohistochemistry (IHC), Immunoprecipitation (IP), Immunocytochemistry (ICC)

Product Details

Purpose:	Polyclonal Antibody to Pigment Epithelium Derived Factor (PEDF)
Immunogen:	Recombinant Pigment Epithelium Derived Factor (PEDF) corresponding to Gln20~Thr418 with Two N-terminal Tags, His-tag and SUMO-tag
Isotype:	IgG
Specificity:	The antibody is a rabbit polyclonal antibody raised against PEDF. It has been selected for its ability to recognize PEDF in immunohistochemical staining and western blotting.
Purification:	Antigen-specific affinity chromatography followed by Protein A affinity chromatography

Target Details

Target:	PEDF (SERPINF1)
---------	-----------------

Target Details

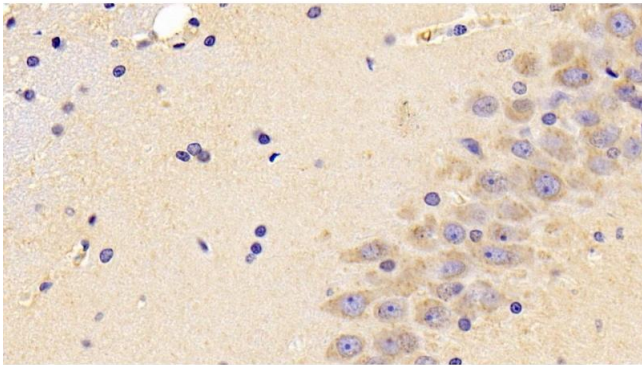
Alternative Name:	Pigment Epithelium Derived Factor (SERPINF1 Products)
Background:	SERPINF1, EPC1, PIG35, SDF3, Serpin F1, Cell proliferation-inducing gene 35, Serpin Peptidase Inhibitor, Clade F Member 1 (Alpha-2 Antiplasmin), Stromal Cell Derived Factor 3

Application Details

Application Notes:	Western blotting: 0.5-2 µg/mL 1:500-2000 Immunohistochemistry: 5-20 µg/mL 1:50-200 Immunocytochemistry: 5-20 µg/mL 1:50-200 Optimal working dilutions must be determined by end user.
Comment:	The thermal stability is described by the loss rate. The loss rate was determined by accelerated thermal degradation test, that is, incubate the protein at 37°C for 48h, and no obvious degradation and precipitation were observed. The loss rate is less than 5% within the expiration date under appropriate storage condition.
Restrictions:	For Research Use only

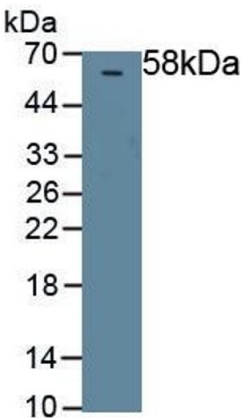
Handling

Format:	Liquid
Buffer:	0.01M PBS, pH 7.4, containing 0.05 % Proclin-300, 50 % glycerol.
Preservative:	ProClin
Precaution of Use:	This product contains ProClin: a POISONOUS AND HAZARDOUS SUBSTANCE which should be handled by trained staff only.
Storage:	4 °C, -20 °C
Storage Comment:	Store at 4°C for frequent use. Stored at -20°C in a manual defrost freezer for two year without detectable loss of activity. Avoid repeated freeze-thaw cycles.
Expiry Date:	24 months



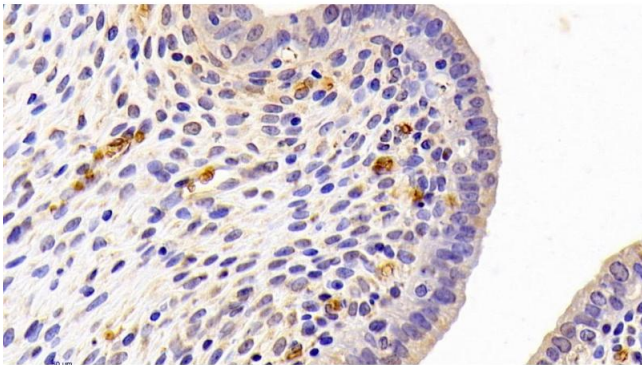
Immunohistochemistry

Image 1. Detection of PEDF in Rat Cerebrum Tissue using Polyclonal Antibody to Pigment Epithelium Derived Factor (PEDF)



Western Blotting

Image 2. Detection of Recombinant PEDF, Rat using Polyclonal Antibody to Pigment Epithelium Derived Factor (PEDF)



Immunohistochemistry

Image 3. Detection of PEDF in Rat Uterus Tissue using Polyclonal Antibody to Pigment Epithelium Derived Factor (PEDF)