

Datasheet for ABIN7440794

**anti-p300 antibody (AA 1-158)****3** Images[Go to Product page](#)

## Overview

Quantity:	100 µL
Target:	p300 (EP300)
Binding Specificity:	AA 1-158
Reactivity:	Rat
Host:	Rabbit
Clonality:	Polyclonal
Conjugate:	This p300 antibody is un-conjugated
Application:	Western Blotting (WB), Immunohistochemistry (IHC), Immunoprecipitation (IP), Immunocytochemistry (ICC)

## Product Details

Purpose:	Polyclonal Antibody to E1A Binding Protein P300 (EP300)
Immunogen:	Recombinant E1A Binding Protein P300 (EP300) corresponding to Met1~Pro158 with N-terminal His and GST Tag
Isotype:	IgG
Specificity:	The antibody is a rabbit polyclonal antibody raised against EP300. It has been selected for its ability to recognize EP300 in immunohistochemical staining and western blotting.
Purification:	Antigen-specific affinity chromatography followed by Protein A affinity chromatography

## Target Details

Target:	p300 (EP300)
---------	--------------

## Target Details

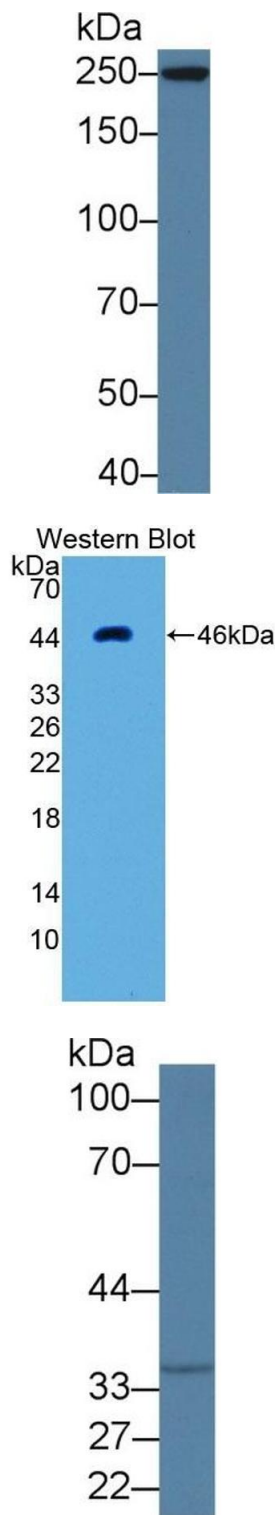
Alternative Name:	E1A Binding Protein P300 ( <a href="#">EP300 Products</a> )
Background:	KAT3B, p300, Histone Acetyltransferase p300
Pathways:	<a href="#">p53 Signaling</a> , <a href="#">Notch Signaling</a> , <a href="#">Interferon-gamma Pathway</a> , <a href="#">Intracellular Steroid Hormone Receptor Signaling Pathway</a> , <a href="#">Regulation of Intracellular Steroid Hormone Receptor Signaling</a> , <a href="#">Regulation of Lipid Metabolism by PPARalpha</a> , <a href="#">Regulation of Muscle Cell Differentiation</a> , <a href="#">Regulation of Cell Size</a>

## Application Details

Application Notes:	Western blotting: 0.5-2 µg/mL Immunohistochemistry: 5-20 µg/mL Immunocytochemistry: 5-20 µg/mL Optimal working dilutions must be determined by end user.
Comment:	The thermal stability is described by the loss rate. The loss rate was determined by accelerated thermal degradation test, that is, incubate the protein at 37°C for 48h, and no obvious degradation and precipitation were observed. The loss rate is less than 5% within the expiration date under appropriate storage condition.
Restrictions:	For Research Use only

## Handling

Format:	Liquid
Buffer:	PBS, pH 7.4, containing 0.02 % Sodium azide, 50 % glycerol.
Preservative:	Sodium azide
Precaution of Use:	This product contains Sodium azide: a POISONOUS AND HAZARDOUS SUBSTANCE which should be handled by trained staff only.
Storage:	4 °C, -20 °C
Storage Comment:	Store at 4°C for frequent use. Stored at -20°C in a manual defrost freezer for two year without detectable loss of activity. Avoid repeated freeze-thaw cycles.
Expiry Date:	24 months



#### Western Blotting

**Image 1.** Detection of EP300 in Rat Serum using Polyclonal Antibody to E1A Binding Protein P300 (EP300)

#### Western Blotting

**Image 2.** Detection of Recombinant EP300, Rat using Polyclonal Antibody to E1A Binding Protein P300 (EP300)

#### Western Blotting

**Image 3.** Detection of EP300 in Rat Cerebrum lysate using Polyclonal Antibody to E1A Binding Protein P300 (EP300)