

Datasheet for ABIN7440842

anti-CLCF1 antibody[Go to Product page](#)**1** Image

Overview

Quantity:	100 µL
Target:	CLCF1
Reactivity:	Rat
Host:	Rabbit
Clonality:	Polyclonal
Conjugate:	This CLCF1 antibody is un-conjugated
Application:	Western Blotting (WB), Immunohistochemistry (IHC), Immunoprecipitation (IP), Immunocytochemistry (ICC)

Product Details

Purpose:	Polyclonal Antibody to Cardiotrophin Like Cytokine Factor 1 (CLCF1)
Immunogen:	Recombinant Cardiotrophin Like Cytokine Factor 1 (CLCF1) corresponding to N-terminal His Tag
Isotype:	IgG
Specificity:	The antibody is a rabbit polyclonal antibody raised against CLCF1. It has been selected for its ability to recognize CLCF1 in immunohistochemical staining and western blotting.
Purification:	Antigen-specific affinity chromatography followed by Protein A affinity chromatography

Target Details

Target:	CLCF1
Alternative Name:	Cardiotrophin Like Cytokine Factor 1 (CLCF1 Products)

Target Details

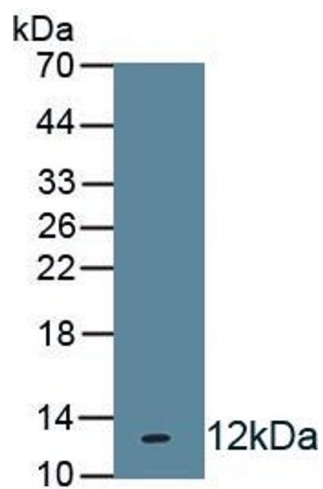
Background:	CLC, NR6, BSF3, CISS2, NNT1, Novel Neurotrophin-1, B Cell-Stimulating Factor-3
Pathways:	Regulation of Leukocyte Mediated Immunity , Positive Regulation of Immune Effector Process , Production of Molecular Mediator of Immune Response

Application Details

Application Notes:	Western blotting: 0.5-2 µg/mL 1:500-2000 Immunohistochemistry: 5-20 µg/mL 1:50-200 Immunocytochemistry: 5-20 µg/mL 1:50-200 Optimal working dilutions must be determined by end user.
Comment:	The thermal stability is described by the loss rate. The loss rate was determined by accelerated thermal degradation test, that is, incubate the protein at 37°C for 48h, and no obvious degradation and precipitation were observed. The loss rate is less than 5% within the expiration date under appropriate storage condition.
Restrictions:	For Research Use only

Handling

Format:	Liquid
Buffer:	0.01M PBS, pH 7.4, containing 0.05 % Proclin-300, 50 % glycerol.
Preservative:	ProClin
Precaution of Use:	This product contains ProClin: a POISONOUS AND HAZARDOUS SUBSTANCE which should be handled by trained staff only.
Storage:	4 °C,-20 °C
Storage Comment:	Store at 4°C for frequent use. Stored at -20°C in a manual defrost freezer for two year without detectable loss of activity. Avoid repeated freeze-thaw cycles.
Expiry Date:	24 months



Western Blotting

Image 1. Detection of Recombinant CLCF1, Rat using Polyclonal Antibody to Cardiotrophin Like Cytokine Factor 1 (CLCF1)