

Datasheet for ABIN7440854
anti-Endonuclease G antibody (AA 16-290)[Go to Product page](#)

4 Images

Overview

Quantity:	100 µL
Target:	Endonuclease G (ENDOG)
Binding Specificity:	AA 16-290
Reactivity:	Human
Host:	Rabbit
Clonality:	Polyclonal
Conjugate:	This Endonuclease G antibody is un-conjugated
Application:	Western Blotting (WB), Immunohistochemistry (IHC), Immunoprecipitation (IP), Immunocytochemistry (ICC)

Product Details

Purpose:	Polyclonal Antibody to Endonuclease G, Mitochondrial (ENDOG)
Immunogen:	Recombinant Endonuclease G, Mitochondrial (ENDOG) corresponding to Leu16~Lys290 with N-terminal His Tag
Isotype:	IgG
Specificity:	The antibody is a rabbit polyclonal antibody raised against ENDOG. It has been selected for its ability to recognize ENDOG in immunohistochemical staining and western blotting.
Cross-Reactivity:	Mouse, Pig, Rat
Purification:	Antigen-specific affinity chromatography followed by Protein A affinity chromatography

Target Details

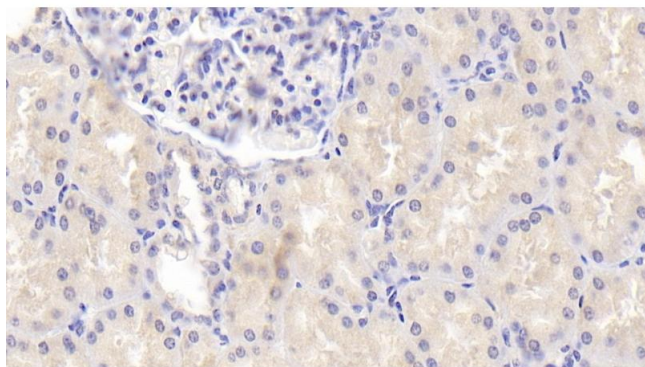
Target:	Endonuclease G (ENDOG)
Alternative Name:	Endonuclease G, Mitochondrial (ENDOG Products)
Background:	ENDO-G
Pathways:	Apoptosis

Application Details

Application Notes:	Western blotting: 0.5-2 µg/mL Immunohistochemistry: 5-20 µg/mL Immunocytochemistry: 5-20 µg/mL Optimal working dilutions must be determined by end user.
Comment:	The thermal stability is described by the loss rate. The loss rate was determined by accelerated thermal degradation test, that is, incubate the protein at 37°C for 48h, and no obvious degradation and precipitation were observed. The loss rate is less than 5% within the expiration date under appropriate storage condition.
Restrictions:	For Research Use only

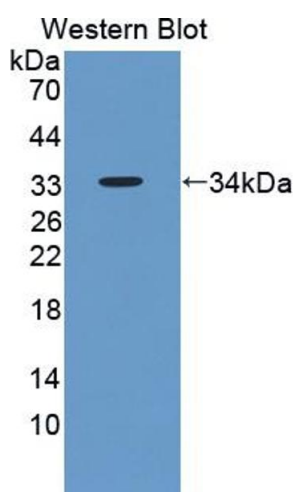
Handling

Format:	Liquid
Buffer:	0.01M PBS, pH 7.4, containing 0.05 % Proclin-300, 50 % glycerol.
Preservative:	ProClin
Precaution of Use:	This product contains ProClin: a POISONOUS AND HAZARDOUS SUBSTANCE which should be handled by trained staff only.
Storage:	4 °C,-20 °C
Storage Comment:	Store at 4°C for frequent use. Stored at -20°C in a manual defrost freezer for two year without detectable loss of activity. Avoid repeated freeze-thaw cycles.
Expiry Date:	24 months



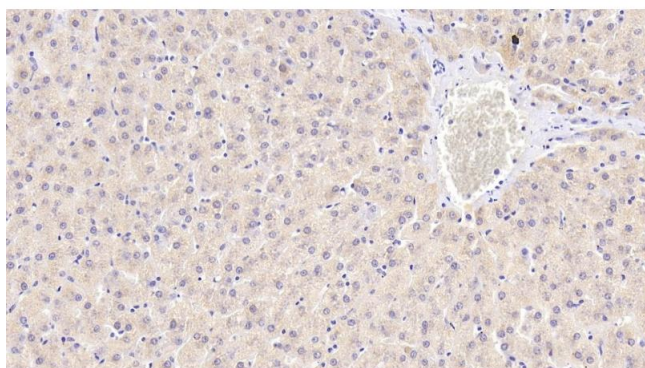
Immunohistochemistry

Image 1. Detection of ENDOG in Human Kidney Tissue using Polyclonal Antibody to Endonuclease G, Mitochondrial (ENDOG)



Western Blotting

Image 2. Detection of Recombinant ENDOG, Human using Polyclonal Antibody to Endonuclease G, Mitochondrial (ENDOG)



Immunohistochemistry

Image 3. Detection of ENDOG in Human Liver Tissue using Polyclonal Antibody to Endonuclease G, Mitochondrial (ENDOG)

Please check the [product details page](#) for more images. Overall 4 images are available for ABIN7440854.