

Datasheet for ABIN7440998  
**anti-C1QA antibody (AA 23-245)**

## 6 Images

[Go to Product page](#)

## Overview

|                      |  |
|----------------------|--|
| Quantity:            | 100 µL   |
| Target:              | C1QA   |
| Binding Specificity: | AA 23-245  |
| Reactivity:          | Rat  |
| Host:                | Rabbit   |
| Clonality:           | Polyclonal   |
| Conjugate:           | This C1QA antibody is un-conjugated  |
| Application:         | Western Blotting (WB), Immunohistochemistry (IHC), Immunoprecipitation (IP), Immunocytochemistry (ICC) |

## Product Details

|                   |  |
|-------------------|--|
| Purpose:          | Polyclonal Antibody to Complement Component 1, Q Subcomponent A (C1qA)   |
| Immunogen:        | Recombinant Complement Component 1, Q Subcomponent A (C1qA) corresponding to Glu23~Ala245 with N-terminal His Tag  |
| Isotype:          | IgG  |
| Specificity:      | The antibody is a rabbit polyclonal antibody raised against C1qA. It has been selected for its ability to recognize C1qA in immunohistochemical staining and western blotting. |
| Cross-Reactivity: | Human, Mouse   |
| Purification:     | Antigen-specific affinity chromatography followed by Protein A affinity chromatography   |

## Target Details

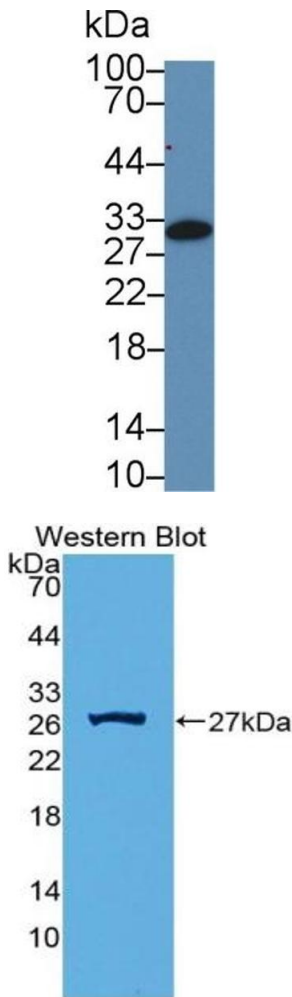
|                   |  |
|-------------------|--|
| Target:           | C1QA   |
| Alternative Name: | Complement Component 1, Q Subcomponent A ( <a href="#">C1QA Products</a> ) |
| Background:       | Complement Component 1,q Subcomponent,Alpha Polypeptide                    |
| Pathways:         | <a href="#">Complement System</a>  |

## Application Details

|                    |   |
|--------------------|---|
| Application Notes: | Western blotting: 0.5-2 µg/mL<br>1:500-2000 Immunohistochemistry: 5-20 µg/mL<br>1:50-200 Immunocytochemistry: 5-20 µg/mL<br>1:50-200 Optimal working dilutions must be determined by end user.  |
| Comment:           | The thermal stability is described by the loss rate. The loss rate was determined by accelerated thermal degradation test, that is, incubate the protein at 37°C for 48h, and no obvious degradation and precipitation were observed. The loss rate is less than 5% within the expiration date under appropriate storage condition. |
| Restrictions:      | For Research Use only   |

## Handling

|                    |   |
|--------------------|---|
| Format:            | Liquid  |
| Buffer:            | 0.01M PBS, pH 7.4, containing 0.05 % Proclin-300, 50 % glycerol.  |
| Preservative:      | ProClin   |
| Precaution of Use: | This product contains ProClin: a POISONOUS AND HAZARDOUS SUBSTANCE which should be handled by trained staff only.   |
| Storage:           | 4 °C,-20 °C   |
| Storage Comment:   | Store at 4°C for frequent use. Stored at -20°C in a manual defrost freezer for two year without detectable loss of activity. Avoid repeated freeze-thaw cycles. |
| Expiry Date:       | 24 months   |



Western Blotting

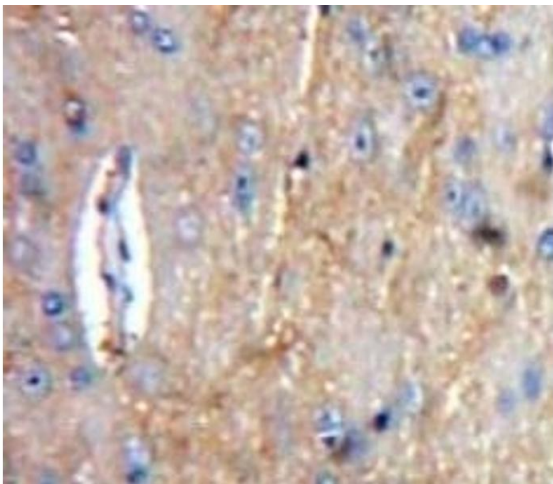
**Image 1.** Detection of C1qA in Mouse Serum using Polyclonal Antibody to Complement Component 1, Q Subcomponent A (C1qA)

Western Blotting

**Image 2.** Detection of Recombinant C1qA, Rat using Polyclonal Antibody to Complement Component 1, Q Subcomponent A (C1qA)

Immunohistochemistry

**Image 3.** #VALUE!



Please check the [product details page](#) for more images. Overall 6 images are available for ABIN7440998.