

Datasheet for ABIN7441028

anti-Kallikrein 13 antibody (AA 25-261)**3** Images[Go to Product page](#)

Overview

Quantity:	100 µL
Target:	Kallikrein 13 (KLK13)
Binding Specificity:	AA 25-261
Reactivity:	Mouse
Host:	Rabbit
Clonality:	Polyclonal
Conjugate:	This Kallikrein 13 antibody is un-conjugated
Application:	Western Blotting (WB), Immunohistochemistry (IHC), Immunoprecipitation (IP), Immunocytochemistry (ICC)

Product Details

Purpose:	Polyclonal Antibody to Kallikrein 13 (KLK13)
Immunogen:	Recombinant Kallikrein 13 (KLK13) corresponding to Val25~Ala261
Isotype:	IgG
Specificity:	The antibody is a rabbit polyclonal antibody raised against KLK13. It has been selected for its ability to recognize KLK13 in immunohistochemical staining and western blotting.
Cross-Reactivity:	Human, Rat
Purification:	Antigen-specific affinity chromatography followed by Protein A affinity chromatography

Target Details

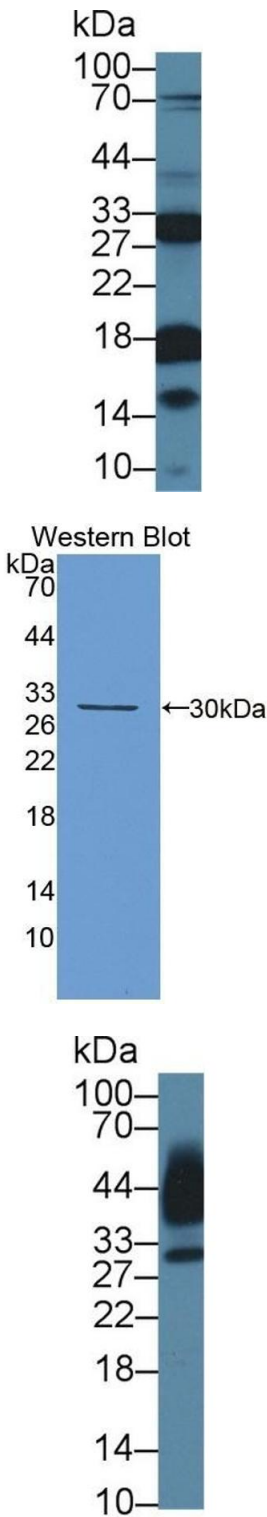
Target:	Kallikrein 13 (KLK13)
Alternative Name:	Kallikrein 13 (KLK13 Products)
Background:	KLK-L4, KLKL4, Kallikrein-like protein 4
Pathways:	Complement System

Application Details

Application Notes:	Western blotting: 0.5-2 µg/mL 1:170-660 Immunohistochemistry: 5-20 µg/mL 1:17-66 Immunocytochemistry: 5-20 µg/mL 1:17-66 Optimal working dilutions must be determined by end user.
Comment:	The thermal stability is described by the loss rate. The loss rate was determined by accelerated thermal degradation test, that is, incubate the protein at 37°C for 48h, and no obvious degradation and precipitation were observed. The loss rate is less than 5% within the expiration date under appropriate storage condition.
Restrictions:	For Research Use only

Handling

Format:	Liquid
Buffer:	0.01M PBS, pH 7.4, containing 0.05 % Proclin-300, 50 % glycerol.
Preservative:	ProClin
Precaution of Use:	This product contains ProClin: a POISONOUS AND HAZARDOUS SUBSTANCE which should be handled by trained staff only.
Storage:	4 °C, -20 °C
Storage Comment:	Store at 4°C for frequent use. Stored at -20°C in a manual defrost freezer for two year without detectable loss of activity. Avoid repeated freeze-thaw cycles.
Expiry Date:	24 months



Western Blotting

Image 1. Detection of KLK13 in Rat Prostate lysate using Polyclonal Antibody to Kallikrein 13 (KLK13)

Western Blotting

Image 2. Detection of Recombinant KLK13, Mouse using Polyclonal Antibody to Kallikrein 13 (KLK13)

Western Blotting

Image 3. Detection of KLK13 in Human Saliva using Polyclonal Antibody to Kallikrein 13 (KLK13)