

Datasheet for ABIN7441193
anti-UBE2I antibody (AA 33-158)[Go to Product page](#)

2 Images

Overview

Quantity:	100 µL
Target:	UBE2I
Binding Specificity:	AA 33-158
Reactivity:	Human
Host:	Rabbit
Clonality:	Polyclonal
Conjugate:	This UBE2I antibody is un-conjugated
Application:	Western Blotting (WB), Immunohistochemistry (IHC), Immunocytochemistry (ICC), Immunoprecipitation (IP)

Product Details

Purpose:	Polyclonal Antibody to Ubiquitin Conjugating Enzyme E2I (UBE2I)
Immunogen:	Recombinant Ubiquitin Conjugating Enzyme E2I (UBE2I) corresponding to Asp33~Ser158 with N-terminal His Tag
Isotype:	IgG
Specificity:	The antibody is a rabbit polyclonal antibody raised against UBE2I. It has been selected for its ability to recognize UBE2I in immunohistochemical staining and western blotting.
Cross-Reactivity:	Mouse, Pig, Rat
Purification:	Antigen-specific affinity chromatography followed by Protein A affinity chromatography

Target Details

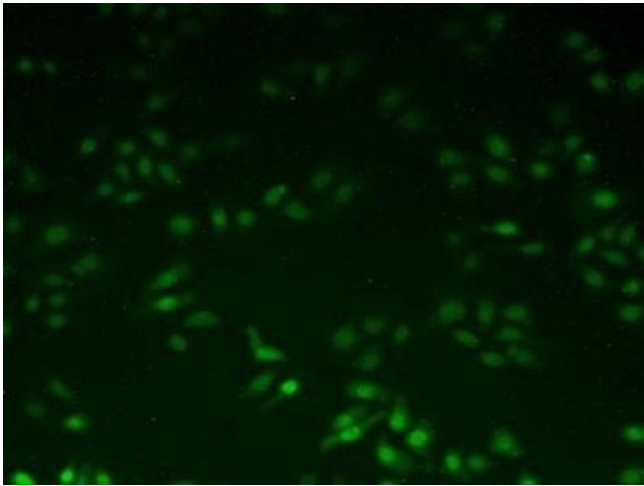
Target:	UBE2I
Alternative Name:	Ubiquitin Conjugating Enzyme E2I (UBE2I Products)
Background:	P18, UBC9, UBCE9, SUMO-protein ligase, Ubiquitin carrier protein 9, Ubiquitin carrier protein I, Ubiquitin-protein ligase I, SUMO-conjugating enzyme UBC9
Pathways:	Intracellular Steroid Hormone Receptor Signaling Pathway , Regulation of Intracellular Steroid Hormone Receptor Signaling , Ubiquitin Proteasome Pathway

Application Details

Application Notes:	Western blotting: 0.5-2 µg/mL Immunohistochemistry: 5-20 µg/mL Immunocytochemistry: 5-20 µg/mL Optimal working dilutions must be determined by end user.
Comment:	The thermal stability is described by the loss rate. The loss rate was determined by accelerated thermal degradation test, that is, incubate the protein at 37°C for 48h, and no obvious degradation and precipitation were observed. The loss rate is less than 5% within the expiration date under appropriate storage condition.
Restrictions:	For Research Use only

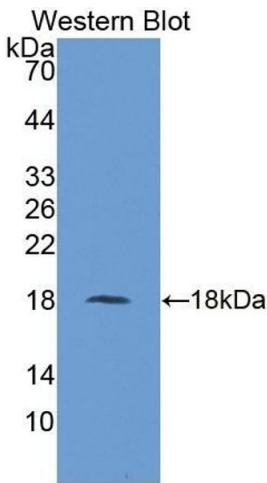
Handling

Format:	Liquid
Buffer:	0.01M PBS, pH 7.4, containing 0.05 % Proclin-300, 50 % glycerol.
Preservative:	ProClin
Precaution of Use:	This product contains ProClin: a POISONOUS AND HAZARDOUS SUBSTANCE which should be handled by trained staff only.
Storage:	4 °C, -20 °C
Storage Comment:	Store at 4°C for frequent use. Stored at -20°C in a manual defrost freezer for two year without detectable loss of activity. Avoid repeated freeze-thaw cycles.
Expiry Date:	24 months



Immunohistochemistry

Image 1. Detection of UBE2I in Human HeLa Cells using Polyclonal Antibody to Ubiquitin Conjugating Enzyme E2I (UBE2I)



Western Blotting

Image 2. Detection of Recombinant UBE2I, Human using Polyclonal Antibody to Ubiquitin Conjugating Enzyme E2I (UBE2I)