

Datasheet for ABIN7441196
anti-UBE2L3 antibody (AA 4-154)

5 Images

[Go to Product page](#)

Overview

Quantity:	100 µL
Target:	UBE2L3
Binding Specificity:	AA 4-154
Reactivity:	Human
Host:	Rabbit
Clonality:	Polyclonal
Conjugate:	This UBE2L3 antibody is un-conjugated
Application:	Western Blotting (WB), Immunohistochemistry (IHC), Immunoprecipitation (IP), Immunocytochemistry (ICC)

Product Details

Purpose:	Polyclonal Antibody to Ubiquitin Conjugating Enzyme E2L3 (UBE2L3)
Immunogen:	Recombinant Ubiquitin Conjugating Enzyme E2L3 (UBE2L3) corresponding to Ser4~Asp154 with N-terminal His Tag
Isotype:	IgG
Specificity:	The antibody is a rabbit polyclonal antibody raised against UBE2L3. It has been selected for its ability to recognize UBE2L3 in immunohistochemical staining and western blotting.
Cross-Reactivity:	Mouse, Rat
Purification:	Antigen-specific affinity chromatography followed by Protein A affinity chromatography

Target Details

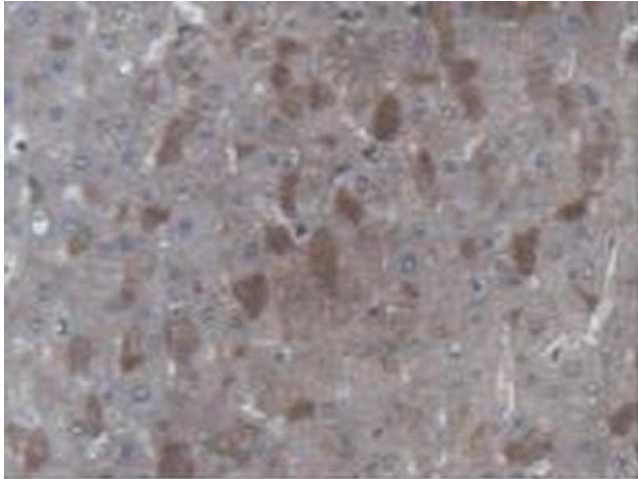
Target:	UBE2L3
Alternative Name:	Ubiquitin Conjugating Enzyme E2L3 (UBE2L3 Products)
Background:	L-UBC, E2-F1, UBCH7, UbcM4, Ubiquitin carrier protein L3, Ubiquitin-conjugating enzyme E2-F1, Ubiquitin-protein ligase L3

Application Details

Application Notes:	Western blotting: 0.5-2 µg/mL 1:250-1000 Immunohistochemistry: 5-20 µg/mL 1:25-100 Immunocytochemistry: 5-20 µg/mL 1:25-100 Optimal working dilutions must be determined by end user.
Comment:	The thermal stability is described by the loss rate. The loss rate was determined by accelerated thermal degradation test, that is, incubate the protein at 37°C for 48h, and no obvious degradation and precipitation were observed. The loss rate is less than 5% within the expiration date under appropriate storage condition.
Restrictions:	For Research Use only

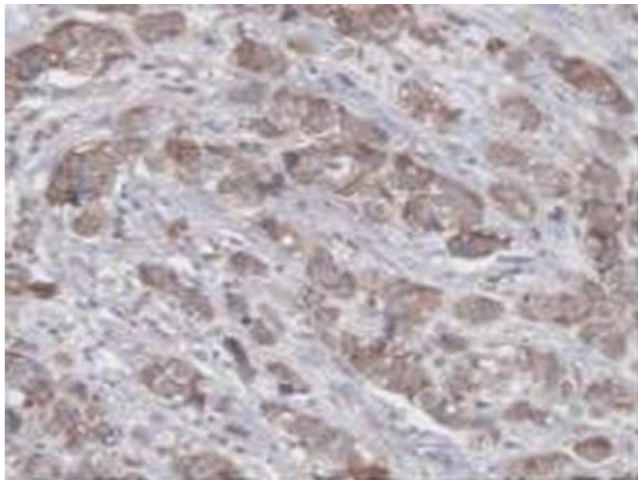
Handling

Format:	Liquid
Buffer:	0.01M PBS, pH 7.4, containing 0.05 % Proclin-300, 50 % glycerol.
Preservative:	ProClin
Precaution of Use:	This product contains ProClin: a POISONOUS AND HAZARDOUS SUBSTANCE which should be handled by trained staff only.
Storage:	4 °C, -20 °C
Storage Comment:	Store at 4°C for frequent use. Stored at -20°C in a manual defrost freezer for two year without detectable loss of activity. Avoid repeated freeze-thaw cycles.
Expiry Date:	24 months



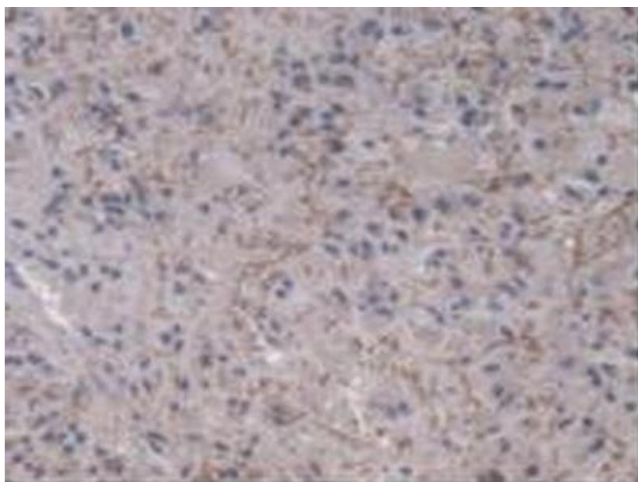
Immunohistochemistry

Image 1. Detection of UBE2L3 in Human Liver Tissue using Polyclonal Antibody to Ubiquitin Conjugating Enzyme E2L3 (UBE2L3)



Immunohistochemistry

Image 2. Detection of UBE2L3 in Human Breast Cancer Tissue using Polyclonal Antibody to Ubiquitin Conjugating Enzyme E2L3 (UBE2L3)



Immunohistochemistry

Image 3. Detection of UBE2L3 in Human Glioma Tissue using Polyclonal Antibody to Ubiquitin Conjugating Enzyme E2L3 (UBE2L3)

Please check the [product details page](#) for more images. Overall 5 images are available for ABIN7441196.