

Datasheet for ABIN7441202  
**anti-RIPK1 antibody (AA 17-289)**

## 6 Images

[Go to Product page](#)

## Overview

|                      |  |
|----------------------|--|
| Quantity:            | 100 µL   |
| Target:              | RIPK1  |
| Binding Specificity: | AA 17-289  |
| Reactivity:          | Human  |
| Host:                | Rabbit   |
| Clonality:           | Polyclonal   |
| Conjugate:           | This RIPK1 antibody is un-conjugated   |
| Application:         | Western Blotting (WB), Immunohistochemistry (IHC), Immunoprecipitation (IP), Immunocytochemistry (ICC) |

## Product Details

|               |  |
|---------------|--|
| Purpose:      | Polyclonal Antibody to Receptor Interacting Serine Threonine Kinase 1 (RIPK1)  |
| Immunogen:    | Recombinant Receptor Interacting Serine Threonine Kinase 1 (RIPK1) corresponding to Phe17~Tyr289 with N-terminal His Tag   |
| Isotype:      | IgG  |
| Specificity:  | The antibody is a rabbit polyclonal antibody raised against RIPK1. It has been selected for its ability to recognize RIPK1 in immunohistochemical staining and western blotting. |
| Purification: | Antigen-specific affinity chromatography followed by Protein A affinity chromatography   |

## Target Details

|         |       |
|---------|-------|
| Target: | RIPK1 |
|---------|-------|

## Target Details

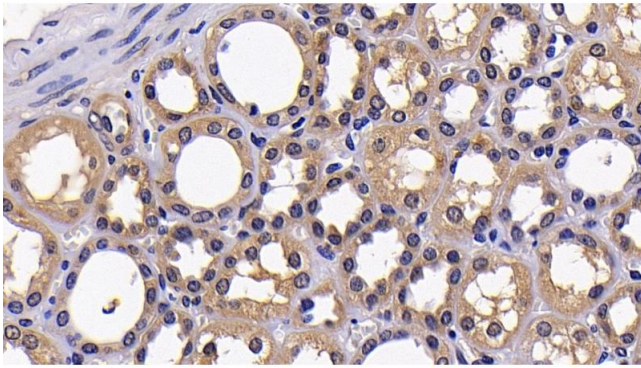
|                   |   |
|-------------------|---|
| Alternative Name: | Receptor Interacting Serine Threonine Kinase 1 ( <a href="#">RIPK1 Products</a> )   |
| Background:       | RIP, Receptor-Interacting Protein, Cell death protein RIP, Serine/threonine-protein kinase RIP  |
| Pathways:         | <a href="#">NF-kappaB Signaling</a> , <a href="#">Apoptosis</a> , <a href="#">Caspase Cascade in Apoptosis</a> , <a href="#">TLR Signaling</a> , <a href="#">Activation of Innate immune Response</a> , <a href="#">Inositol Metabolic Process</a> , <a href="#">Positive Regulation of Endopeptidase Activity</a> , <a href="#">Hepatitis C</a> , <a href="#">Protein targeting to Nucleus</a> , <a href="#">Toll-Like Receptors Cascades</a> , <a href="#">Negative Regulation of intrinsic apoptotic Signaling</a> , <a href="#">SARS-CoV-2 Protein Interactome</a> , <a href="#">Ubiquitin Proteasome Pathway</a> |

## Application Details

|                    |   |
|--------------------|---|
| Application Notes: | Western blotting: 0.5-3 µg/mL<br>Immunohistochemistry: 5-30 µg/mL<br>Immunocytochemistry: 5-30 µg/mL<br>Optimal working dilutions must be determined by end user.   |
| Comment:           | The thermal stability is described by the loss rate. The loss rate was determined by accelerated thermal degradation test, that is, incubate the protein at 37°C for 48h, and no obvious degradation and precipitation were observed. The loss rate is less than 5% within the expiration date under appropriate storage condition. |
| Restrictions:      | For Research Use only   |

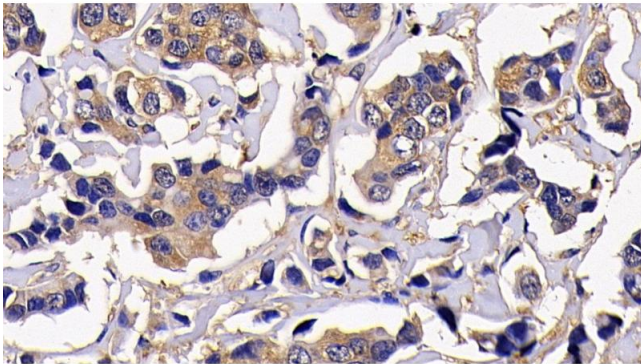
## Handling

|                    |   |
|--------------------|---|
| Format:            | Liquid  |
| Buffer:            | 0.01M PBS, pH 7.4, containing 0.05 % Proclin-300, 50 % glycerol.  |
| Preservative:      | ProClin   |
| Precaution of Use: | This product contains ProClin: a POISONOUS AND HAZARDOUS SUBSTANCE which should be handled by trained staff only.   |
| Storage:           | 4 °C, -20 °C  |
| Storage Comment:   | Store at 4°C for frequent use. Stored at -20°C in a manual defrost freezer for two year without detectable loss of activity. Avoid repeated freeze-thaw cycles. |
| Expiry Date:       | 24 months   |



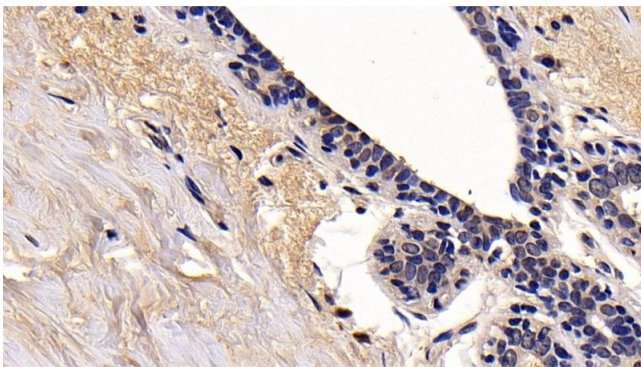
#### Immunohistochemistry

**Image 1.** Detection of RIPK1 in Human Kidney Tissue using Polyclonal Antibody to Receptor Interacting Serine Threonine Kinase 1 (RIPK1)



#### Immunohistochemistry

**Image 2.** Detection of RIPK1 in Human Breast cancer Tissue using Polyclonal Antibody to Receptor Interacting Serine Threonine Kinase 1 (RIPK1)



#### Immunohistochemistry

**Image 3.** Detection of RIPK1 in Human Mammary gland Tissue using Polyclonal Antibody to Receptor Interacting Serine Threonine Kinase 1 (RIPK1)

Please check the [product details page](#) for more images. Overall 6 images are available for ABIN7441202.