

Datasheet for ABIN7441283
anti-PDE1A antibody (AA 2-318)

3 Images

[Go to Product page](#)

Overview

Quantity:	100 µL
Target:	PDE1A
Binding Specificity:	AA 2-318
Reactivity:	Human
Host:	Rabbit
Clonality:	Polyclonal
Conjugate:	This PDE1A antibody is un-conjugated
Application:	Western Blotting (WB), Immunohistochemistry (IHC), Immunoprecipitation (IP), Immunocytochemistry (ICC)

Product Details

Purpose:	Polyclonal Antibody to Phosphodiesterase 1A, Calmodulin Dependent (PDE1A)
Immunogen:	Recombinant Phosphodiesterase 1A, Calmodulin Dependent (PDE1A) corresponding to Gly2~Asp318 with N-terminal His Tag
Isotype:	IgG
Specificity:	The antibody is a rabbit polyclonal antibody raised against PDE1A. It has been selected for its ability to recognize PDE1A in immunohistochemical staining and western blotting.
Cross-Reactivity:	Mouse, Pig, Rat
Purification:	Antigen-specific affinity chromatography followed by Protein A affinity chromatography

Target Details

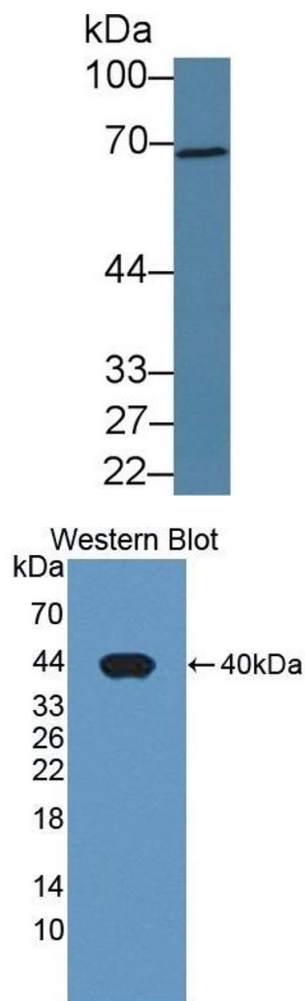
Target:	PDE1A
Alternative Name:	Phosphodiesterase 1A, Calmodulin Dependent (PDE1A Products)
Background:	HCam-1, 61 kDa Cam-PDE, Calcium/calmodulin-dependent 3',5'-cyclic nucleotide phosphodiesterase 1A
Pathways:	Neurotrophin Signaling Pathway , cAMP Metabolic Process , G-protein mediated Events , Interaction of EGFR with phospholipase C-gamma

Application Details

Application Notes:	Western blotting: 0.5-2 µg/mL Immunohistochemistry: 5-20 µg/mL Immunocytochemistry: 5-20 µg/mL Optimal working dilutions must be determined by end user.
Comment:	The thermal stability is described by the loss rate. The loss rate was determined by accelerated thermal degradation test, that is, incubate the protein at 37°C for 48h, and no obvious degradation and precipitation were observed. The loss rate is less than 5% within the expiration date under appropriate storage condition.
Restrictions:	For Research Use only

Handling

Format:	Liquid
Buffer:	PBS, pH 7.4, containing 0.02 % Sodium azide, 50 % glycerol.
Preservative:	Sodium azide
Precaution of Use:	This product contains Sodium azide: a POISONOUS AND HAZARDOUS SUBSTANCE which should be handled by trained staff only.
Storage:	4 °C, -20 °C
Storage Comment:	Store at 4°C for frequent use. Stored at -20°C in a manual defrost freezer for two year without detectable loss of activity. Avoid repeated freeze-thaw cycles.
Expiry Date:	24 months

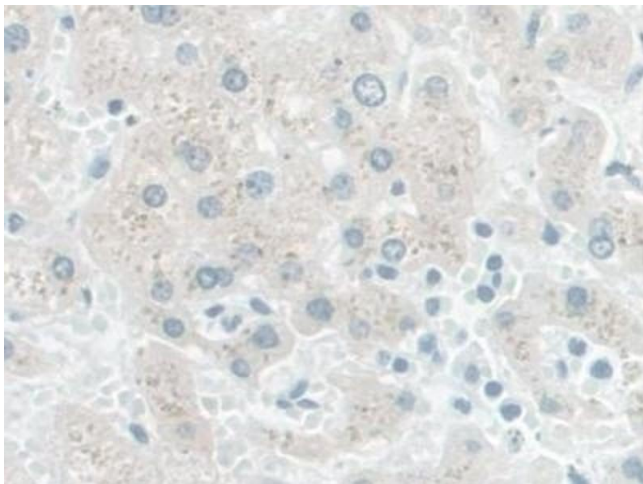


Western Blotting

Image 1. Detection of PDE1A in Porcine Kidney lysate using Polyclonal Antibody to Phosphodiesterase 1A, Calmodulin Dependent (PDE1A)

Western Blotting

Image 2. Detection of Recombinant PDE1A, Human using Polyclonal Antibody to Phosphodiesterase 1A, Calmodulin Dependent (PDE1A)



Immunohistochemistry

Image 3. Detection of PDE1A in Human Liver Tissue using Polyclonal Antibody to Phosphodiesterase 1A, Calmodulin Dependent (PDE1A)