

Datasheet for ABIN7441328
anti-PSME3 antibody (AA 7-254)

6 Images

[Go to Product page](#)

Overview

Quantity:	100 µL
Target:	PSME3
Binding Specificity:	AA 7-254
Reactivity:	Human
Host:	Rabbit
Clonality:	Polyclonal
Conjugate:	This PSME3 antibody is un-conjugated
Application:	Western Blotting (WB), Immunohistochemistry (IHC), Immunoprecipitation (IP), Immunocytochemistry (ICC)

Product Details

Purpose:	Polyclonal Antibody to Proteasome Activator Subunit 3 (PSME3)
Immunogen:	Recombinant Proteasome Activator Subunit 3 (PSME3) corresponding to Val7~Tyr254
Isotype:	IgG
Specificity:	The antibody is a rabbit polyclonal antibody raised against PSME3. It has been selected for its ability to recognize PSME3 in immunohistochemical staining and western blotting.
Cross-Reactivity:	Mouse, Pig
Purification:	Antigen-specific affinity chromatography followed by Protein A affinity chromatography

Target Details

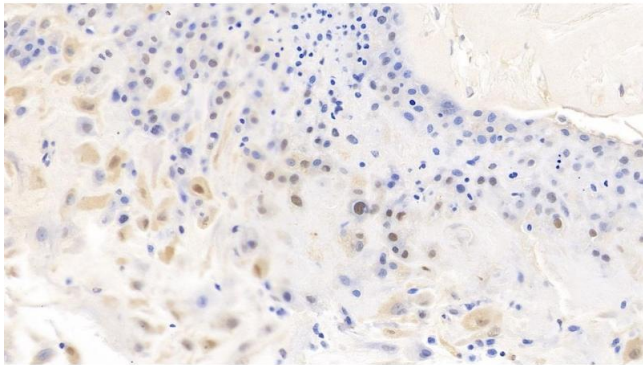
Target:	PSME3
Alternative Name:	Proteasome Activator Subunit 3 (PSME3 Products)
Background:	Ki, PA28G, REG-GAMMA, 11S regulator complex subunit gamma, Activator of multicatalytic protease subunit 3, Ki nuclear autoantigen, Proteasome activator 28 subunit gamma
Pathways:	Mitotic G1-G1/S Phases , DNA Replication , Positive Regulation of Endopeptidase Activity , Hepatitis C , Synthesis of DNA

Application Details

Application Notes:	Western blotting: 0.5-2 µg/mL 1:500-2000 Immunohistochemistry: 5-20 µg/mL 1:50-200 Immunocytochemistry: 5-20 µg/mL 1:50-200 Optimal working dilutions must be determined by end user.
Comment:	The thermal stability is described by the loss rate. The loss rate was determined by accelerated thermal degradation test, that is, incubate the protein at 37°C for 48h, and no obvious degradation and precipitation were observed. The loss rate is less than 5% within the expiration date under appropriate storage condition.
Restrictions:	For Research Use only

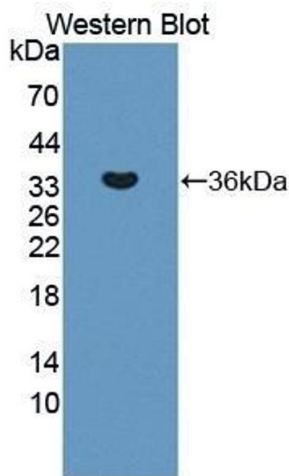
Handling

Format:	Liquid
Buffer:	PBS, pH 7.4, containing 0.02 % Sodium azide, 50 % glycerol.
Preservative:	Sodium azide
Precaution of Use:	This product contains Sodium azide: a POISONOUS AND HAZARDOUS SUBSTANCE which should be handled by trained staff only.
Storage:	4 °C, -20 °C
Storage Comment:	Store at 4°C for frequent use. Stored at -20°C in a manual defrost freezer for two year without detectable loss of activity. Avoid repeated freeze-thaw cycles.
Expiry Date:	24 months



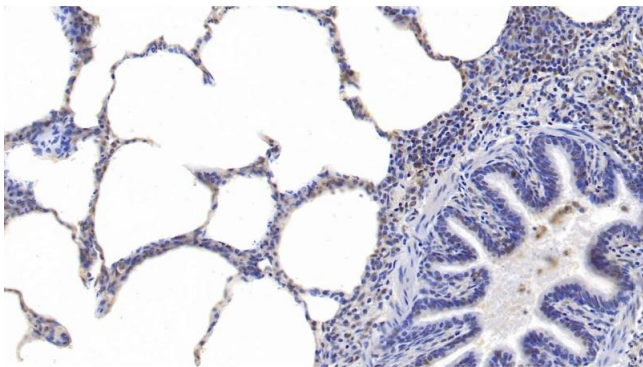
Immunohistochemistry

Image 1. Detection of PSME3 in Human Placenta Tissue using Polyclonal Antibody to Proteasome Activator Subunit 3 (PSME3)



Western Blotting

Image 2. Detection of Recombinant PSME3, Human using Polyclonal Antibody to Proteasome Activator Subunit 3 (PSME3)



Immunohistochemistry

Image 3. Detection of PSME3 in Human Lung Tissue using Polyclonal Antibody to Proteasome Activator Subunit 3 (PSME3)

Please check the [product details page](#) for more images. Overall 6 images are available for ABIN7441328.